

Woodforde Green

Castle Cary, BA7 7LD

COOPER
AND
TANNER



£285,000 Freehold

A spacious three-bedroom semi-detached home in a peaceful Castle Cary location, featuring open-plan living, generous gardens, and a private garage with parking.

Woodforde Green Castle Cary BA7 7LD

 3  1  1 EPC C

£285,000 Freehold

ACCOMMODATION

Located in a quiet residential area of Castle Cary, this well-presented three-bedroom semi-detached house offers comfortable family living with generous indoor and outdoor space. The ground floor features a welcoming entrance porch and a large open-plan living/dining area with French doors opening onto a rear patio—perfect for entertaining or relaxing. A well-proportioned kitchen completes the downstairs layout. Upstairs, the property boasts two double bedrooms, a single bedroom, a family bathroom, and a separate WC, providing practical convenience for busy households.

OUTSIDE

Outside, the property enjoys a well-maintained front garden laid mostly to lawn, while the rear garden offers a blend of lawn and patio space ideal for outdoor dining and play. A rear gate provides access to a single garage, with additional parking available directly in front.

SERVICES

The property benefits from mains electric and gas as well as mains water and drainage, there is also gas fired central heating installed and the council tax band for Somerset Council is C.

LOCATION

Castle Cary is a picturesque market town in South Somerset, known for its historic charm and golden stone buildings. Surrounded by beautiful countryside, it offers a peaceful lifestyle with a strong community feel. The town features independent shops, cafes, and a weekly market. Castle Cary railway station provides direct links to London, Bristol, and Exeter. It's an ideal location for those seeking rural tranquillity with excellent connectivity.

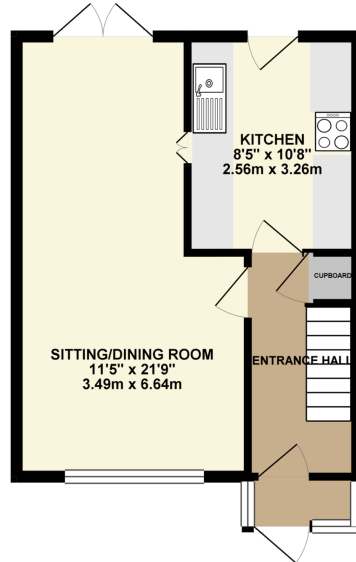
VIEWING ARRANGEMENTS

Viewings to be arranged through Cooper and Tanner Castle Cary on 01963 350327

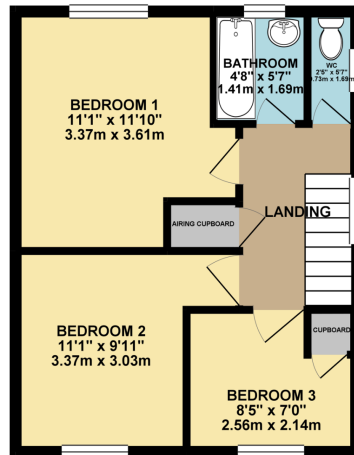




GROUND FLOOR 380.17 sq. ft.
(35.32 sq. m.)



1ST FLOOR 366.92 sq. ft.
(34.09 sq. m.)



TOTAL FLOOR AREA : 747.09 sq. ft. (69.41 sq. m.) approx.

Whilst every attempt has been made to ensure the accuracy of the floorplan contained here, measurements of doors, windows, rooms and any other items are approximate and no responsibility is taken for any error, omission or mis-statement. This plan is for illustrative purposes only and should be used as such by any prospective purchaser. The services, systems and appliances shown have not been tested and no guarantee as to their operability or efficiency can be given.
Made with Metropix ©2025

CASTLE CARY OFFICE

Telephone 01963 350327

Fore Street, Castle Cary, Somerset BA7 7BG

castlecary@cooperandtanner.co.uk

COOPER
AND
TANNER

Important Notice: These particulars are set out as a general outline only for the guidance of intended purchasers and do not constitute, nor constitute part of, an offer or contract. All descriptions, dimensions, reference to condition and necessary permissions for use and occupation, warranties and other details are given without responsibility and any intending purchasers should not rely on them as statements or representations of fact but must satisfy themselves by inspection or otherwise as to the correctness of each of them.

