

SOLD



Elmfield Road, Potters Bar, Hertfordshire, EN6 2JJ

£785,000

- **DETACHED BUNGALOW**
- **SEPARATE GUEST WC**
- **GARAGE**
- **OFF STREET PARKING**
- **WALKING DISTANCE TO POTTERS BAR MAINLINE STATION**

- **THREE BEDROOMS**
- **LOUNGE TO THE REAR**
- **SOUTH FACING PRIVATE GARDEN**
- **GOOD SCHOOL CATCHMENT AREA**

Elmfield Road, Potters Bar, Hertfordshire, . EN6 2JJ

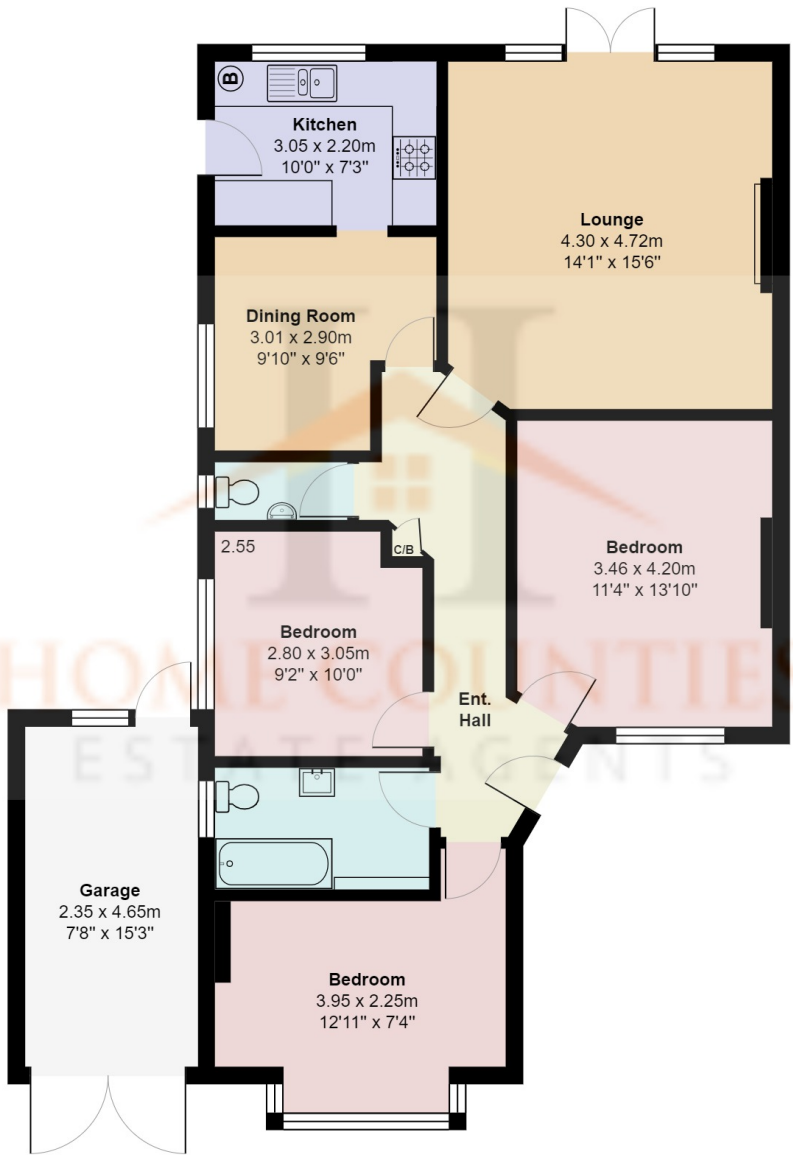
£785,000 Freehold

**OFFERED CHAIN FREE **

This delightful Detached Three bedroom bungalow is ideally located within walking distance to Potters Bar Mainline Station, local shops and amenities and a short walk to Dame Alice Owen's School. The property benefits from three bedrooms, family bathroom, separate guest cloakroom, lounge overlooking the private south facing garden, a separate recently fitted kitchen with separate dining area.

Externally the home benefits from off street parking for several cars, a garage, and a mature south facing garden.

Viewing advised.



Elmfield Road, Hertfordshire EN6

Total Area: 100.5 m² ... 1
All measurements are approximate and for

