

haus

Estate Agents



One Bedroom Flat

Semple Gardens, Chatham, Kent, ME4 6QD

£1,150 pcm

Leasehold

Simple Gardens, Chatham, Kent, ME4 6QD

£1,150 pcm

Leasehold

Description

This charming one-bedroom ground-floor apartment boasts a private, south-facing rear garden and allocated parking for one car or motorcycle, available for long-term let starting from 2nd of September 2024. Upon entering, you'll be greeted by a welcoming hallway leading to a spacious bedroom and a modern shower room. The large lounge-diner area flows seamlessly into the kitchen, with a double-glazed door opening to the well-sized, easy-to-maintain south-facing garden that backs onto Balfour Junior School's playing field, ensuring a green backdrop. This purpose-built apartment offers flexible furnishing options to suit your needs, available either fully furnished, partly furnished, or unfurnished. The property's prime location is a significant advantage, with Chatham train station just 0.5 miles away, providing excellent transport links for commuting or exploring the local area. The apartment's layout is thoughtfully designed to maximize space and comfort, with a bright and airy feel throughout. The lounge-diner is perfect for entertaining or relaxing, while the kitchen is well-equipped for all your culinary needs. The private garden is a delightful outdoor space for enjoying the sun or gardening. Overall, this apartment is ideal for those seeking a comfortable, conveniently located home with excellent amenities and a peaceful garden retreat. Don't miss the opportunity to make this versatile and well-situated property your new home.

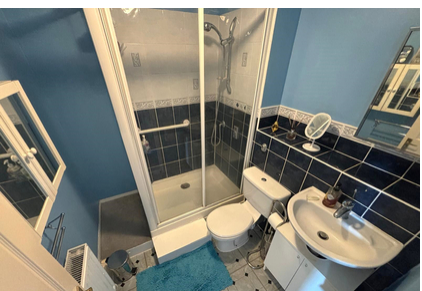
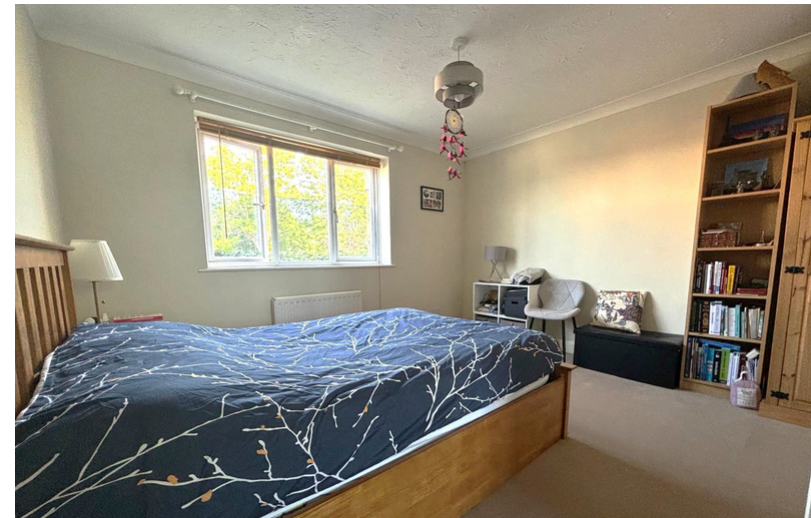
Key Features

- Available to Move in from 2nd September 2024
- Offered Fully, Partly furnished or Unfurnished
- Ground Floor One bedroom Apartment
- Private South facing rear garden
- Allocated Parking for either a car or motorcycle
- Chatham Train Station within 0.5 miles radius
- EPC rating C
- Council Tax band B Medway Council

Local Area

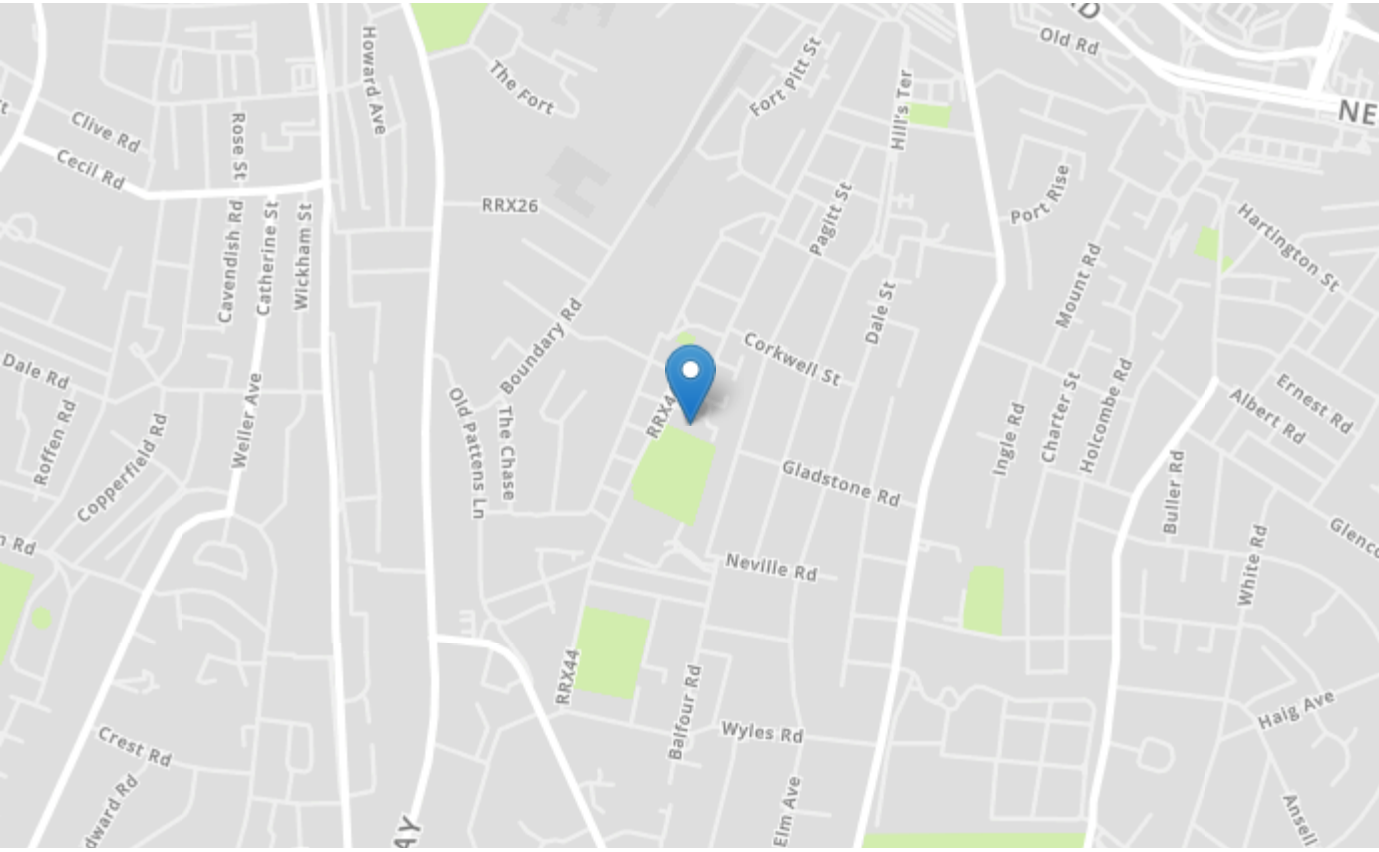
Chatham is located within the Medway towns with good transfer links by rail into Central London and Ebbsfleet International plus road connections to the M2/M25 & M20. Amenities include a bustling Town Centre, the Historic Dockyard, Capstone Ski & Snowboard centre and nearby Gillingham FC, Rochester Castle and Rochester Cathedral.





Property Location

Semple Gardens, Chatham, Kent, ME4 6QD



Energy Efficiency Rating		Current	Potential
Very energy efficient - lower running costs			
(92+)	A		
(81-91)	B		
(69-80)	C	73	77
(55-68)	D		
(39-54)	E		
(21-38)	F		
(1-20)	G		
Not energy efficient - higher running costs			
England, Scotland & Wales		EU Directive 2002/91/EC	

Tenure	Leasehold
Lease Term	N/A
Ground Rent	N/A
Service Charge	N/A
Local Authority	Medway Council
Council Tax	Band B

haus Estate Agents

26, London Road
 Gillingham
 Kent
 ME8 6YX
 Tel: 01634 848883 Email:
 hello@hausestateagents.co.uk

Agent Notes
 These particulars do not form part of an offer or contract and must not be relied upon as statements or representation of fact. The seller does not make or give nor do our employees or haus Estate Agents have authority to make or give any representation or warranty to the property. It should not be assumed that the property has all necessary planning, building regulation or other consents and we have not tested any services, equipment, or facilities. All photographs, measurements, floorplans and distances referred to are given as a guide only and should not be relied upon for the purchase of carpets or any other fixtures or fittings. References to tenure, service charges and ground rent (where applicable) as well as council tax are based on information supplied by the seller. The Buyer should verify all information themselves by inspection or otherwise prior to a legal commitment to purchase. The copyright of all details, photographs and floorplans remains exclusive to haus Estate Agents. If you require clarification or further information on any points, please contact us, especially if you are travelling some distance to view.