



18 Dudley Place, Stanwell, Staines-upon-Thames, Surrey. TW19 7BG.
1 Bedroom Apartment - £200,000 Leasehold

18 Dudley Place, Stanwell, Staines-upon-Thames, Surrey. TW19 7BG.

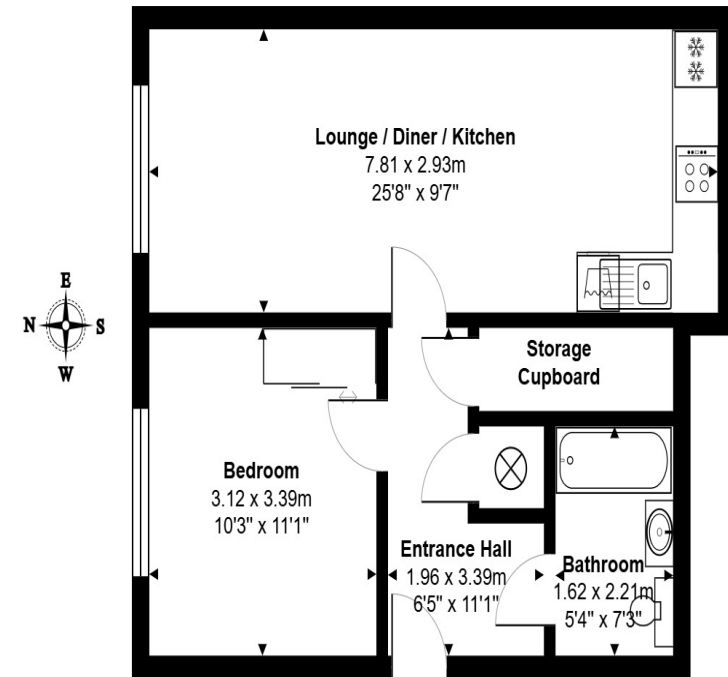
01784 451458

1 Bedroom Apartment - £200,000 Leasehold

WELL PRESENTED & SPACIOUS ONE BEDROOM APARTMENT SITUATED WITHIN THIS SOUGHT AFTER DEVELOPMENT IDEALLY LOCATED FOR BOTH STAINES & ASHFORD TOWN CENTRES, LOCAL MOTORWAY NETWORKS & WITHIN MOMENTS OF HEATHROW AIRPORT. The property is in good order throughout and benefits from a spacious lounge/diner, modern fitted kitchen, large double bedroom, modern white bathroom suite, a long lease and allocated parking. Viewings Highly Recommended!

Key Features

**WELL PRESENTED & SPACIOUS
WITHIN MOMENTS OF HEATHROW AIRPORT
EASY ACCESS TO BOTH STAINES & ASHFORD TOWN CENTRES
MODERN KITCHEN & BATHROOM
ALLOCATED PARKING**



First Floor

Total Area: 48.4 m² ... 521 ft²

All measurements are approximate and for display purposes only.





18 Dudley Place, Stanwell, Staines-upon-Thames, Surrey. TW19 7BG.

gregory-brown.co.uk



Tenure	Leasehold
Lease Term	To Be Confirmed
Ground Rent	To Be Confirmed
Service Charge	To Be Confirmed
Local Authority	
Council Tax	

We have prepared these property particulars as a general guide to a broad description of the property. They are not intended to constitute part of an offer or contract. We have not carried out a structural survey and the services, appliances and specific fittings have not been tested. All photographs, measurements, floorplans and distances referred to are given as a guide only and should not be relied upon for the purchase of carpets or any other fixtures or fittings. Lease details, service charges and ground rents (where applicable) and council tax are given as a guide only and should be checked and confirmed by your solicitor prior to exchange of contracts. The copyright of all details, photographs and floorplans remain exclusive to Gregory Brown.

