



## **NEWTON LODGE, WEST PARKSIDE, LONDON SE10 0BA**

**£1,700  
PCM**

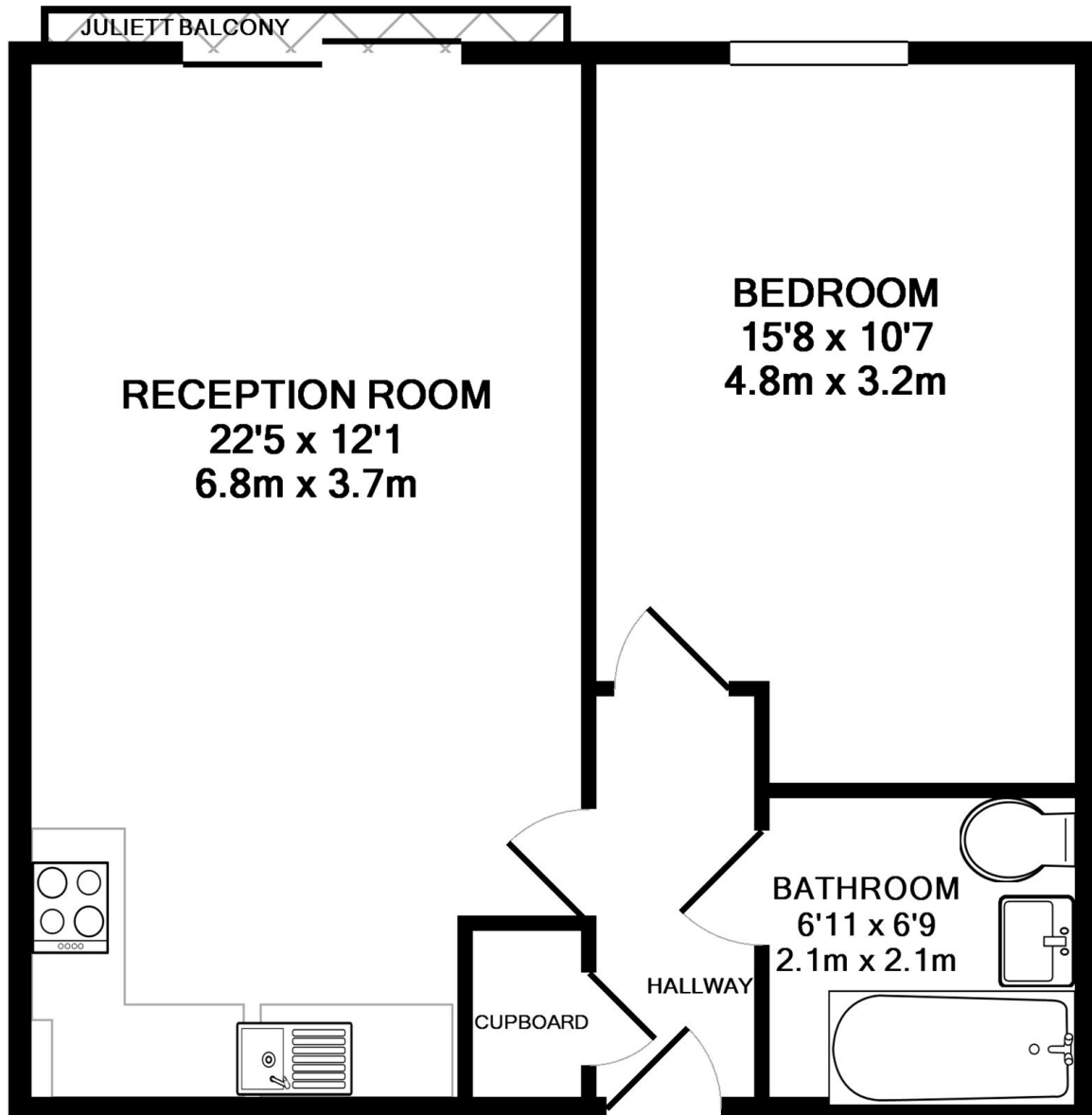
Impeccably finished one bedroom apartment offers an elegant high end specification, stylish kitchen, open plan to the luxurious living area complete with solid oak wood floors and opulent designer hand printed wallpapers. Further benefits include 24 hour concierge services and onsite shops. The development is located a short walk from North Greenwich tube station (Jubilee Line), the Emirates Cable Cars and the O2 with the many attractions within, including bars and restaurants.

- Newly refurbished
- Luxury finishes
- Solid oak wood floors

**VIEWING BY APPOINTMENT WITH 1ST AVENUE. CALL: 020 8293 8600**

**6.1 NEWTON LODGE,  
WEST PARKSIDE,  
LONDON SE10 0BA**

**£1,700 PCM**



TOTAL APPROX. FLOOR AREA 508 SQ.FT. (47.2 SQ.M.)

Whilst every attempt has been made to ensure the accuracy of the floor plan contained here, measurements of doors, windows, rooms and any other items are approximate and no responsibility is taken for any error, omission, or mis-statement. This plan is for illustrative purposes only and should be used as such by any prospective purchaser. The services, systems and appliances shown have not been tested and no guarantee as to their operability or efficiency can be given

Made with Metropix ©2018

**VIEWING BY APPOINTMENT  
WITH 1ST AVENUE.**

**CALL: 020 8293 8600**

**1stavenue**  
Real Estate Services