



Entrance Hall

Lounge

13' 1" x 9' 11" (3.99m x 3.02m)

Kitchen/Dining Room

13' 3" x 9' 4" (4.04m x 2.84m)

First Floor Landing

Bedroom One

13' 3" x 9' 3" (4.04m x 2.82m)

Bathroom

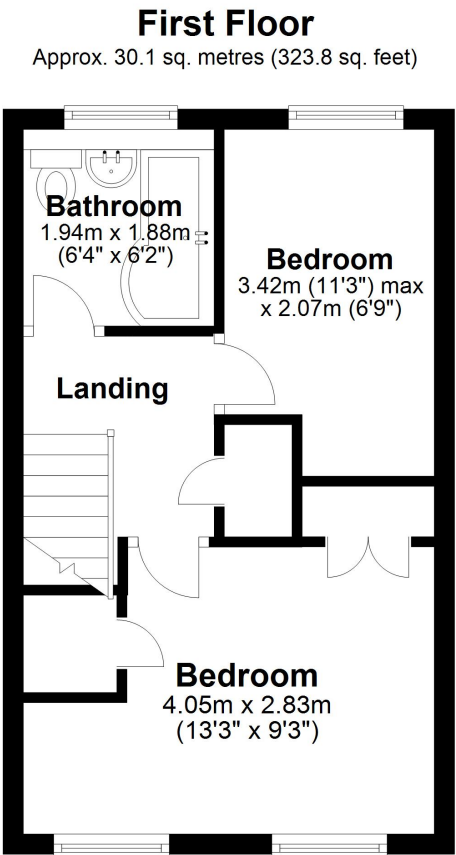
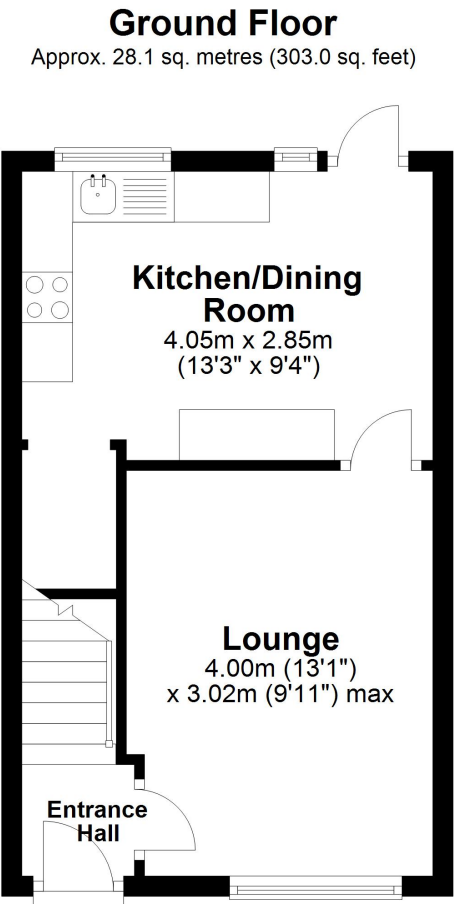
6' 4" x 6' 2" (1.93m x 1.88m)

Bedroom Two

11' 3" x 6' 9" (3.43m x 2.06m)

Rear Garden

Off Road Parking



Whilst every attempt has been made to ensure the accuracy of the floor plan contained here, measurements of doors, windows, rooms and any other items are approximate and no responsibility is taken for any error, omission or mis-statement. This plan is for illustrative purposes only and should be used as such by any prospective purchaser.
Plan produced using PlanUp.

