



Tel: 01242 676767

[www.cotswoldestateagents.co.uk](http://www.cotswoldestateagents.co.uk)

41a Church Road, Bishops Cleeve, Cheltenham, GL52 8LP

16, Turkdean Road  
GL51 6AL

**£325,000**



FOR SALE

Set in a prime location within an attractive tree lined road is this spacious, three bedroom, chalet style semi-detached bungalow. The comfortable, well planned living accommodation comprises generous lounge/diner, conservatory, kitchen/breakfast room, shower room and bedrooms two and three. On the first floor is bedroom one with ample built in storage space.

To the exterior is a blocked paved drive way for three vehicles leading to a car port. The rear garden is a generous size and is stocked with various flower and shrub borders. There is also a large wooden garage/work shop.\* NO ONWARD CHAIN \*

Entrance hall with doors to cloaks cupboard, lounge/diner, kitchen/breakfast room, shower room and bedrooms two and three and stairs to first floor living accommodation. Lounge/diner: door to conservatory and window to side aspect, feature marble fireplace : Conservatory with sliding door to patio and attractive rear garden. Kitchen/breakfast room: fitted with a matching range of eye and base level storage units with built-in fan assisted oven, ceramic hob and extractor hood, integrated dish washer and appliance space. Bedroom two: window to front aspect. Bedroom three: window to front aspect.

First floor: Bedroom one: double aspect windows, built-in airing cupboard, drawer units and eaves storage cupboards.

Exterior: To the front of the property there is a substantial block paved driveway offering hardstanding for approximately three vehicles leading to a gate and car port. Rear garden: attractive enclosed garden with substantial patio area stocked with various flower and shrub borders.

Large wooden garage/workshop.

Lounge/dining room: 21'7 x 12'3 max

Conservatory: 11'3 x 9'7

Kitchen/breakfast room: 20'2 x 5'11

Bedroom one: 13'3 max x 11'10 max

Bedroom two: 8'10 x 7'11

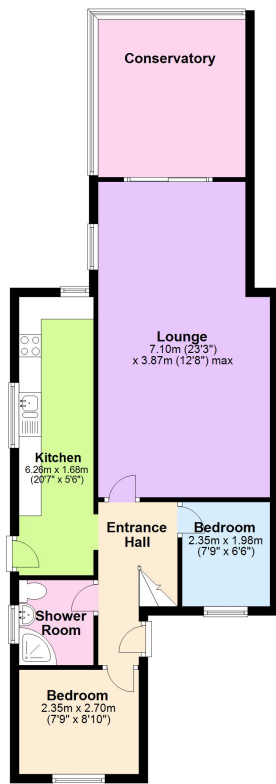
Bedroom three: 10'7 x 6'6



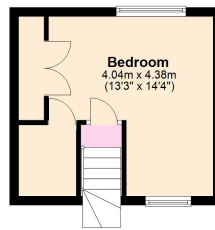




**Ground Floor**  
Approx. 70.2 sq. metres (755.7 sq. feet)



**First Floor**  
Approx. 17.7 sq. metres (190.5 sq. feet)



Total area: approx. 87.9 sq. metres (946.1 sq. feet)

This floorplan is for illustrative purposes only and is not to scale. Where measurements are shown they are approximate and should not be relied on. No liability is accepted in respect of any consequential loss arising from the use of this plan.  
Plan produced using PlanUp.