



36 The Leys, Langford, Biggleswade, Bedfordshire, SG18 9RS

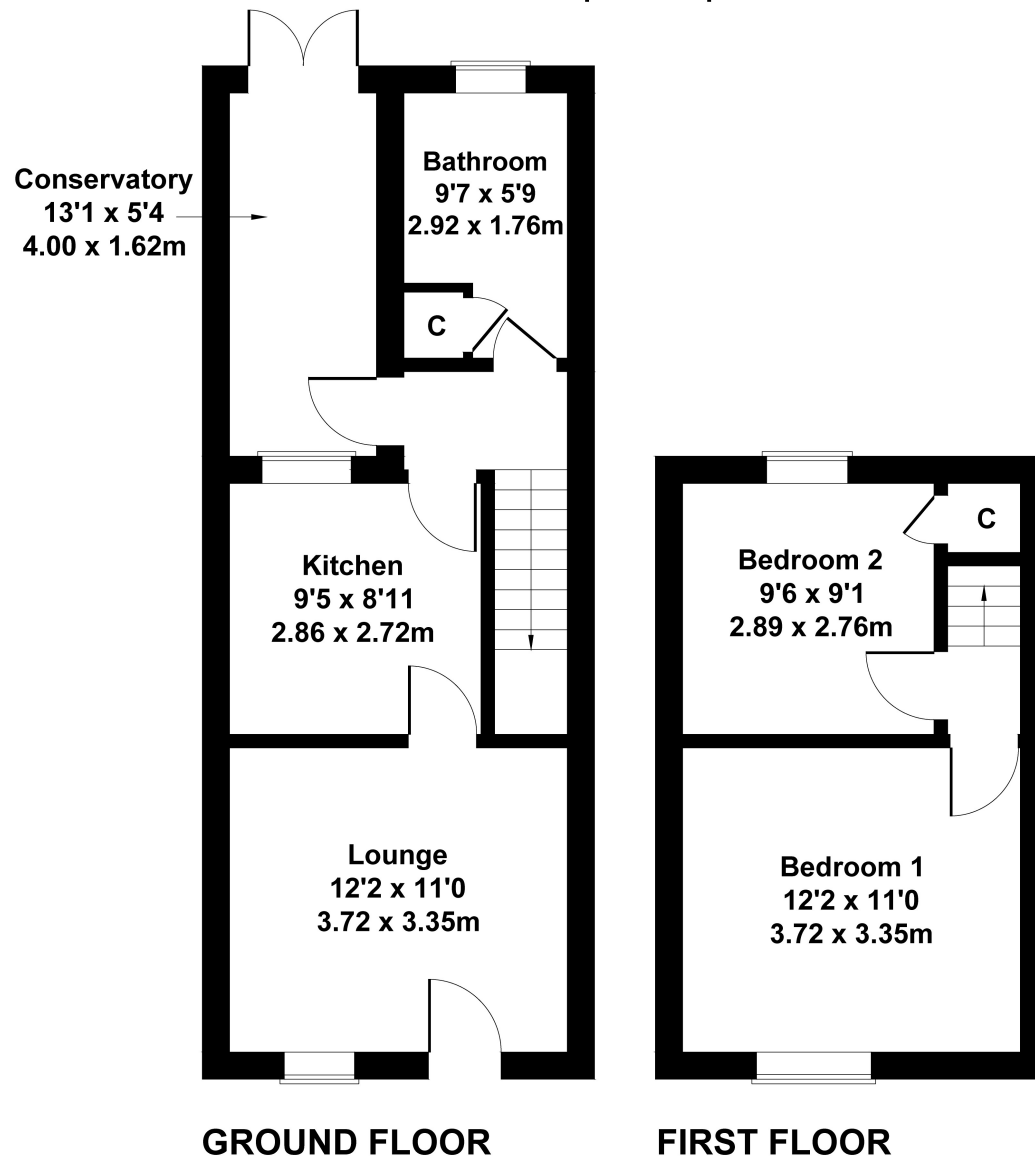
£269,950

Overlooking a small green is this well presented two double bedroom Victorian cottage. Offered with a lounge with feature fireplace, re-fitted kitchen and a re-fitted bathroom . Useful conservatory/study for those that work from home plus two double bedrooms. Outside is a south facing private rear garden with summer house. Well worth a look



36 The Leys, Langford

Approximate Gross Internal Area
678 sq ft - 63 sq m



Not to Scale. Produced by The Plan Portal 2020
For Illustrative Purposes Only.

- WELL PRESENTED VICTORIAN COTTAGE
- OVERLOOKS SMALL GREEN
- LOUNGE WITH FEATURE FIREPLACE
- FITTED KITCHEN
- CONSERVATORY/STUDY
- QUALITY BATHROOM
- TWO DOUBLE BEDROOMS
- SOUTH FACING GARDEN WITH SUMMER HOUSE
- WITHIN EASY ACCESS TO OPEN COUNTRYSIDE YET CLOSE TO TRAIN STATION + A1 MOTORWAY

