



83 High Avenue, Letchworth Garden City, Hertfordshire, SG6 3QW

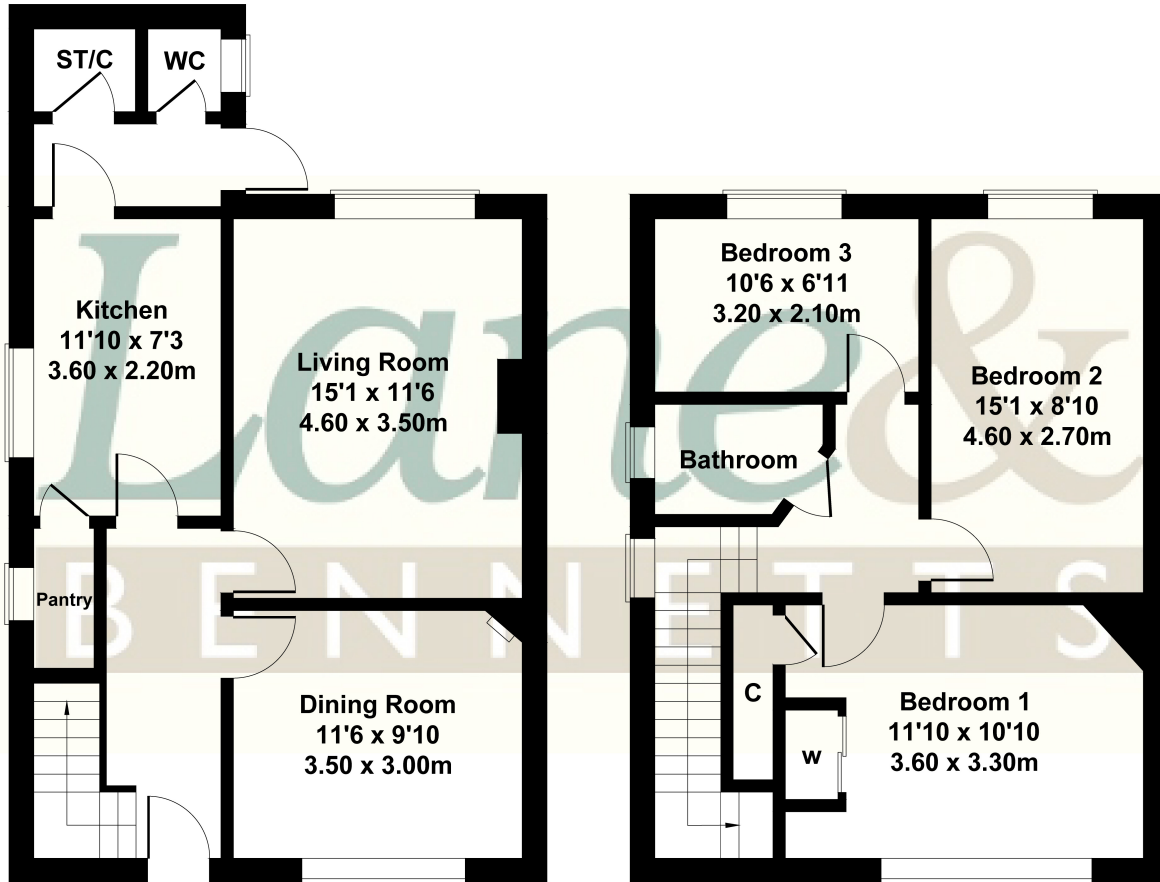
£400,000

Lane & Bennetts are delighted to present to the market this character garden city cottage, built in the 1920's within an easy walk to the town, and close to sought after schools. With three good sized bedrooms, 1st floor family bathroom upstairs, the property boasts a comfortable lounge with views of the garden, separate dining room, great fitted kitchen with super walk-in pantry, cloakroom & lobby areas. There is a beautiful wrap around front garden as well as a well-manicured South-East facing rear garden. There is off-road parking for 2/3 vehicles.



# 83 High Avenue

Approximate Gross Internal Area  
1044 sq ft - 97 sq m



**GROUND FLOOR**

**FIRST FLOOR**

Not to Scale. Produced by The Plan Portal 2023  
For Illustrative Purposes Only.

- EARLY GARDEN CITY HOME
- THREE GOOD SIZED BEDROOMS
- UPSTAIRS BATHROOM
- FITTED KITCHEN WITH APPLIANCES & WALK-IN PANTRY
- REAR LOBBY/STORAGE ROOM
- DOWNSTAIRS CLOAKROOM
- LOUNGE OVERLOOKING GARDEN
- SEPARATE DINING ROOM
- LESS THAN 15 MINUTES WALK TO STATION
- JUST 5 MINUTES TO SOUGHT AFTER SCHOOLS & OPEN COUNTRYSIDE

