

Hendon Lane, London, N3

£1,495,000

Situated in a prime Finchley location, this DETACHED six/seven bedroom home offers generous living space over three floors. Close to transport, shops, restaurants, places of worship, and sought-after schools, it is well placed for family life. The ground floor features two reception rooms with en-suites (usable as bedrooms), a through-lounge, kitchen/diner with access to a south-facing garden, utility room, and guest WC. Upstairs there are four double bedrooms, two with en-suites and a dressing area, plus a family bathroom. The top floor has two further doubles, one en-suite. The property further benefits from air conditioning, a double garage and drive and is available chain-free .



- Double-fronted Detached House
- Six Bathrooms (5 En-suite)
- Double Garage
- Through Reception Rooms
- Utility Area
- Chain Free
- 6/7 Bedrooms
- Air Conditioning
- Kitchen/Diner
- South Facing Garden
- 1.0 mile to Finchley Central Station
- Council Tax Band G



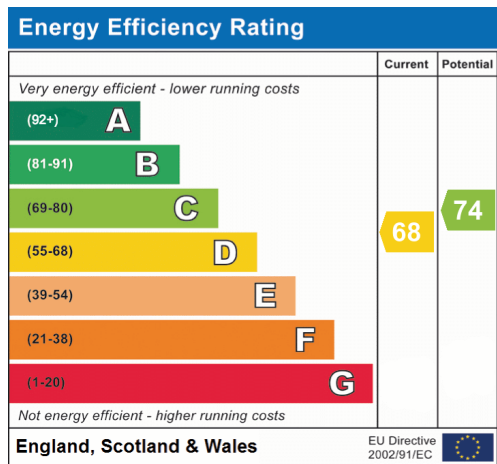
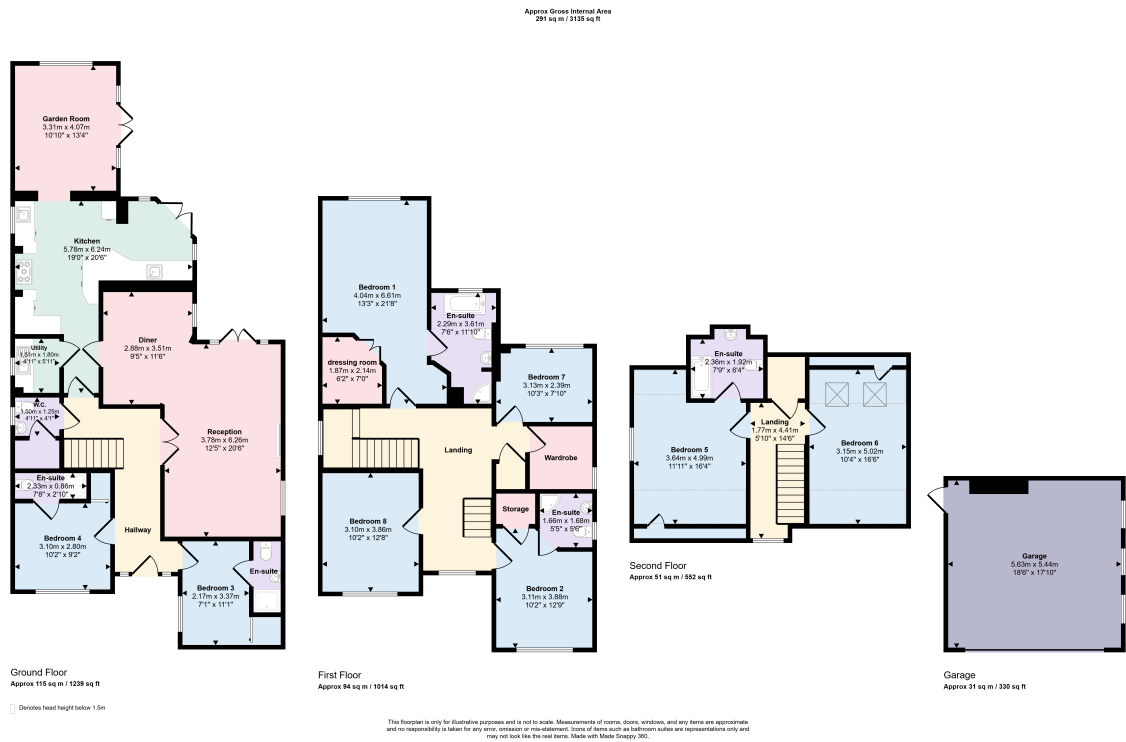












When you are considering a property we recommend that you instruct a surveyor to ensure the property is in sound structural order and that equipment, fitting, services, etc are in working order and/or fit for their purpose and a solicitor to verify tenure and title of the property. We can give no assurances in this regard nor can we verify accuracy of measurements or distance.

**Jeremy Leaf & Co.,** for themselves and for their client, whose agent they are, give notice that:

- Under the terms of the Anti Money Laundering Act 2007, intending purchasers will be asked to produce identification documentation at a later stage and we would ask for your co-operation in order that there will be no delay in agreeing the sale.
- These particulars do not constitute any part of an offer or a contract.
- All statements contained in these particulars are made without responsibility on the part of Jeremy Leaf & Co or their client.
- None of the statements contained in these particulars is to be relied upon as a statement, warranty or representation of fact.
- Please note we have not tested the services or any of the equipment or appliances in this property, accordingly we strongly advise prospective buyers to commission their own survey or service reports before finalising their offer to purchase.
- Any intending purchaser or tenant must satisfy himself by inspection, or otherwise as to the correctness of each of the statements contained in these particulars.
- No person in the employment of Jeremy Leaf & Co has any authority to make any representation or warranty whatsoever in relation to this property.
- Unless otherwise stated, all prices and rents are quoted exclusive of Value Added Tax (VAT). Any intending purchasers or lessees must satisfy themselves independently as to the incidents of VAT in respect of any transaction.
- This document is not intended for distribution and may not be reproduced or further distributed or published for any purpose. In particular, any tenants detailed in this property should not be approached without prior written permission.