

11 Sherborne Road, Petts Wood, Orpington, Kent, BR5 1GX

## Property Images













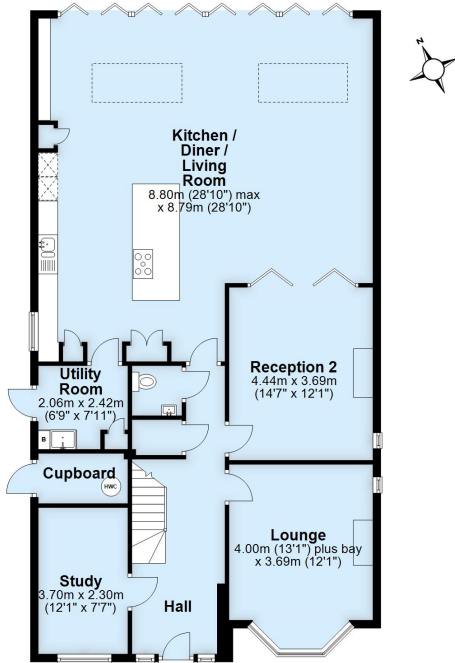






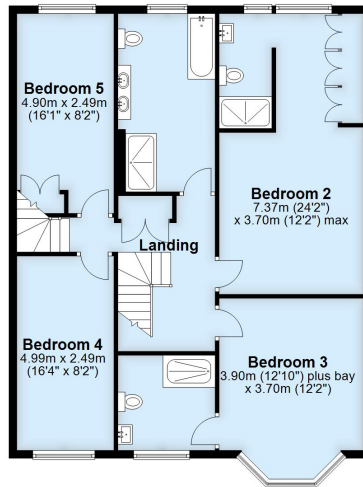
### Ground Floor

Approx. 137.0 sq. metres (1474.2 sq. feet)



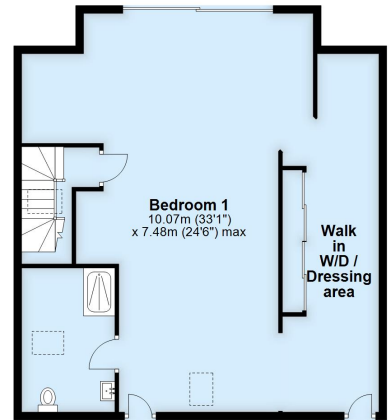
### First Floor

Approx. 99.9 sq. metres (1075.5 sq. feet)



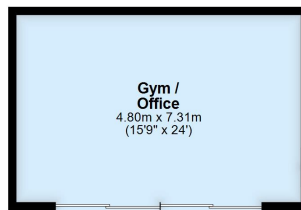
### Second Floor

Approx. 90.2 sq. metres (971.3 sq. feet)



### Outbuilding

Approx. 35.1 sq. metres (377.7 sq. feet)



Total area: approx. 362.2 sq. metres (3898.8 sq. feet)

This plan is for general layout guidance and may not be to scale.  
Plan produced using PlanUp.