



9 Whittle Court,
Knowlhill, Milton Keynes, MK5 8FT

Tel: 01908 231 551



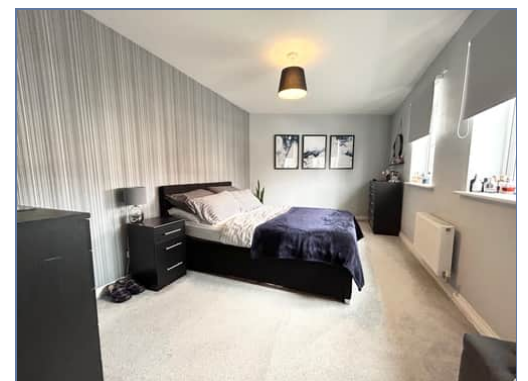
mail@elevationstateagents.com



**19 St Helena Avenue, Bletchley, Milton
Keynes, Buckinghamshire, MK3 5FJ**

£69,000 Leasehold

- Two double bedrooms
- £513 per month rent and service charge
- Coach house
- 25% share
- £3,000 Fixtures & Fittings
- EPC Rating C

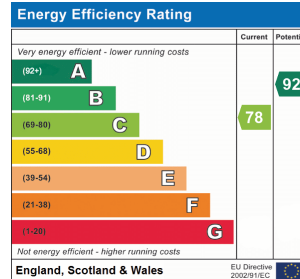


See our full selection of properties online at www.elevationstateagents.com

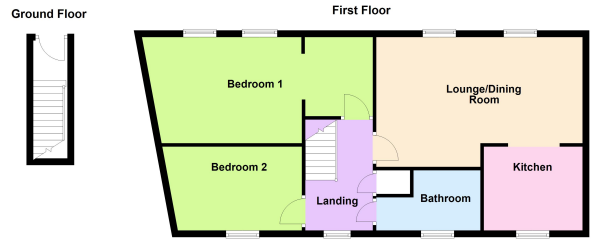


Stunning Two Double Bedroom Coach House for Sale – 25% Share with BPHA Housing Association

This beautiful coach house features two spacious double bedrooms with a open plan kitchen living diner and is available for a 25% share with BPHA Housing Association.



Nestled in Newton Leys, which spans the southern tip of Bletchley, this area is conveniently positioned between the Borough of Milton Keynes and Aylesbury Vale. With easy access to the A4146 and A5, you can quickly reach Milton Keynes, Leighton Buzzard, and the M1. Both Bletchley and Leighton Buzzard Train Stations offer direct services to London Euston. Newton Leys Primary School, which opened in 2016, caters to children from nursery age (3 years) through to Year 6 (11 years). For secondary education, many parents opt for the Grammar Schools in Aylesbury, located about 11 miles away. In 2017, the Newton Leys District Centre was established, providing a range of local amenities, including a Costa, a Chinese takeaway, a fish and chip shop, dry cleaners, a hair salon, and an 8,000 sq ft Asda. The Turing Key pub, which opened in April 2019, has quickly become a community hub, surrounded by several charming village pubs just a short drive away, including The Three Locks in Stoke Hammond, The Crooked Billet in Newton Longville, and The Betsey Wynne in Swanbourne. Don't miss the opportunity to make this lovely coach house your new home!



Floor plans are for layout purposes only. Measurements are approximate and subject to inaccuracies. Plan produced using PlanUp.

Disclaimer

Whilst we have endeavoured to prepare our sales particulars accurately none of the services, appliances or equipment have been tested. A buyer should satisfy themselves on such matters prior to purchase. Any measurements or distances mentioned in these particulars are for guide reference only. If such particulars are fundamental to a purchase, buyers should rely on their own enquiries. All enquiries should be directed to Elevation Estate Agents in the first instance.