



Foxglove Close, Rugby, CV23 0TS



GUILD HOUSE
Estate Agents



A fantastic three bedroom linked detached with heaps of potential situated in the quiet cul-de-sac Foxglove Close, on Boughton Vale, Rugby. A well maintained and looked after property in need of some cosmetic updating. With a driveway, garage, front and rear gardens, it would make a lovely family starter home, close to good schools Boughton Vale, and local amenities.

The good size lounge has a window to the front aspect and an opening through to the dining area, which has a sliding patio door to rear. The Kitchen has a range of base and eye level pine units, with sink and drainer. Upstairs has two double bedrooms and an ample single bedroom or office. Overall the property has been much loved and well maintained, but would benefit from a new kitchen and bathroom, and updating the decoration throughout. It has potential for re-modelling internally, possibly to knock through the kitchen into dining area, or even in to the part of the garage. Excellent potential in a lovely residential area, must be seen.

Ground Floor :- Entrance Hall, W.C. Lounge, Dining Area, Kitchen.

First Floor :- Three bedrooms one with en-suite, family bathroom.

Garage with up and over door from the driveway and integrated door in to Kitchen.

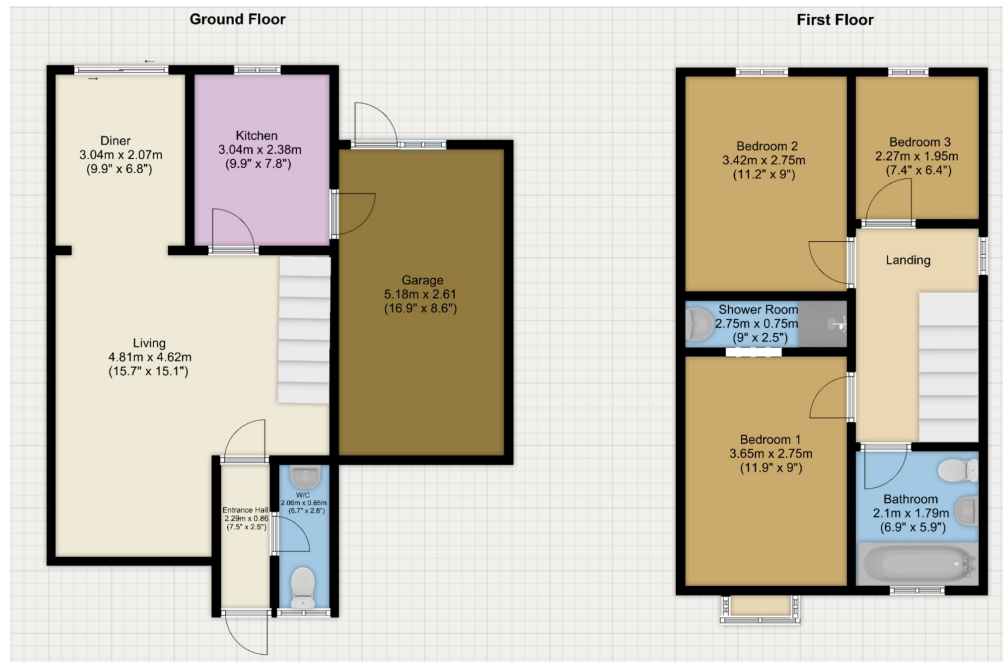
Outside to rear :- Patio area, lawned area, two wooden garden sheds and one greenhouse.



- LINKED DETACHED WITH GREAT POTENTIAL QUIET CUL-DE-SAC BOUGHTON VALE, RUGBY
- THREE BEDROOMS, ONE EN-SUITE, FAMILY BATHROOM
- DRIVEWAY, GARAGE, LOVELY REAR GARDEN, GARDEN SHEDS AND GREENHOUSE
- WELL MAINTAINED, JUST NEEDS SOME COSMETIC UPDATING
- DOUBLE GLAZED, GAS CENTRAL HEATING, IN GOOD ORDER

AMENITIES

- WOULD MAKE AN EXCELLENT FAMILY STARTER HOME



01788 577 218
info@guild-house.com
guildhouseestateagents.co.uk

Agents note: All measurements are approximate and whilst every attempt has been made to ensure accuracy they are for general guidance only and must not be relied on. The fixture and fittings referred to have not been tested and therefore no guarantee can be given that they are in working order. Internal photographs are reproduced for general information and it must not be inferred that any item shown is included with the property.