



**26 Dale Street, Tunbridge Wells, Kent, TN1 2QJ**

**£1,500 pcm**

- Completely refurbished throughout
- Gorgeous large decked garden
- Large Living-room/dining area
- Modern kitchen and bathroom
- Basement study/playroom/bedroom
- Built in storage in bedrooms
- In the heart of Tunbridge Wells town
- Walking distance to Tunbridge Wells mainline station.
- Close to well reputed schools



A great opportunity to acquire a spacious 3 bedroom, three story end of terrace period property with a good sized rear decked garden within the heart of Tunbridge Wells town. This property has been completely re-furbished inside and out to a high standard. The accommodation is spread over three floors comprising of a separate modern/stylish kitchen, downstairs WC, large open plan living and dining room area with plenty of natural light from multiple windows on the ground floor. The lower ground floor has a wonderful basement room which could be a study/playroom or indeed bedroom. It has built in storage, a window for natural light and spot lights from the ceiling. The first floor has three bedrooms, two doubles with incredible built in storage, and a large single. The bathroom is modern with L shaped bath/shower, WC, sink. The house has double glazing throughout and gas central heating. Walking distance to Tunbridge Wells mainline station.

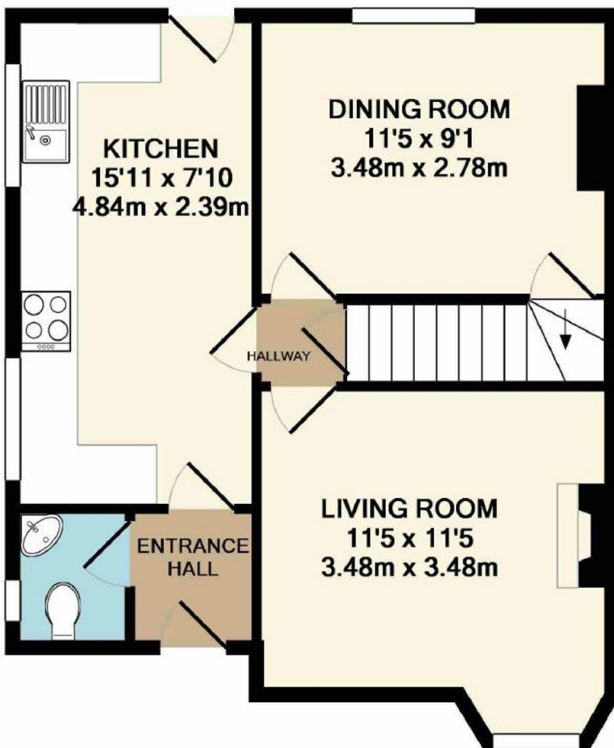
### Viewing Information

To view this property please contact Sally Woods - Lettings Manager at Mother Goose Estate Agents.

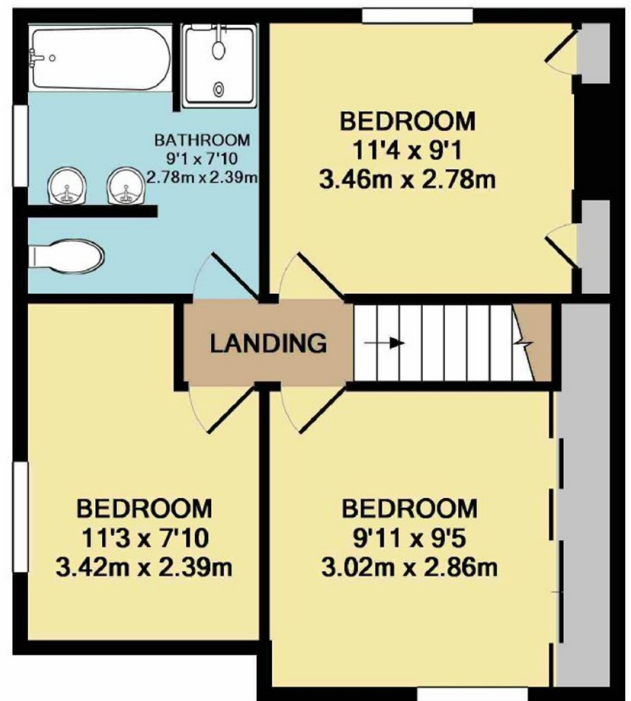
### Location

The property is centrally situated - only a short walk away from The Royal Victoria Place Shopping Centre in Tunbridge Wells High Street and also the historic Pantiles, with its many lovely shops, restaurants and bars. Knights Park near by offers a multi-screen cinema complex, a bowling alley and health/fitness club. There are a number of Parks and recreation grounds in the area, the closest being Grosvenor and Hilbert Park offering a range of activities depending on your preferences. It is also only a short distance from well respected Junior and Senior Schools!





GROUND FLOOR  
APPROX. FLOOR  
AREA 411 SQ.FT.  
(38.2 SQ.M.)



1ST FLOOR  
APPROX. FLOOR  
AREA 400 SQ.FT.  
(37.2 SQ.M.)

TOTAL APPROX. FLOOR AREA 811 SQ.FT. (75.4 SQ.M.)

Whilst every attempt has been made to ensure the accuracy of the floor plan contained here, measurements of doors, windows, rooms and any other items are approximate and no responsibility is taken for any error, omission, or mis-statement. This plan is for illustrative purposes only and should be used as such by any prospective purchaser. The services, systems and appliances shown have not been tested and no guarantee as to their operability or efficiency can be given

Made with Metropix ©2017