



Herbert Road,
Bromley, Kent. BR2 9SH

Tenure: Freehold

3 Bedrooms | 1 Reception Room | 3 Bathrooms



Offered chain free, this charming period terrace house is located on a quiet residential road in the heart of Chatterton Village, close to local amenities and schools. Extended by the current owners, it now offers three bedrooms and three bathrooms. The spacious open-plan sitting/dining room flows into a modern kitchen, with a ground floor shower and utility room, whilst upstairs are to be found three bedrooms and two bathrooms. Outside, there is a rear garden and a large storage facility with rear access. EPC Rating: D

Enquiries To:

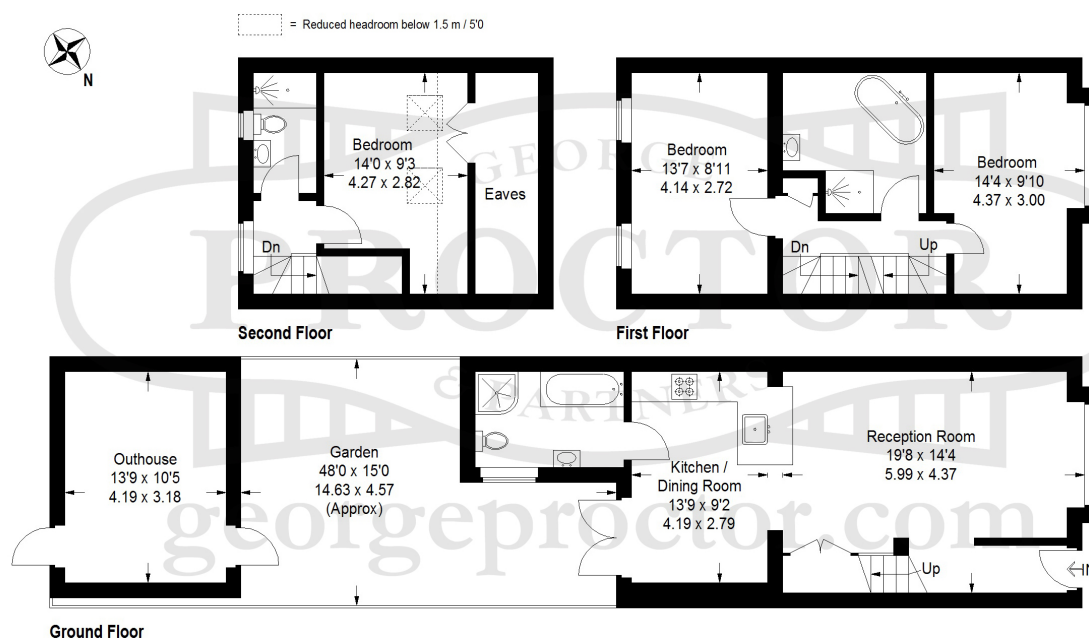
T: 020 8467 2252

E: beosales@georgeproctor.com



The Bickley Estate Office

Southborough Road, Bickley, Kent, BR1 2EB



Approximate Gross Internal Area (Excluding Eaves)

1099 sq ft / 102.1 sq m

Outhouse = 149 sq ft / 13.8 sq m

Total = 1248 sq ft / 115.9 sq m

These particulars whilst believed to be accurate are made without responsibility on the part of the vendor or agents, their accuracy is not guaranteed nor do they form part of any contract and no warranty is given. Services or appliances have not been tested and no guarantee can be given as to their operation, buyers should seek professional advice where necessary. All measurements are approximate and may be rounded to the nearest three inches (10 cm). Floor plans, where shown, are indicative only. Any photographs included may be taken with the use of a wide angle lens. If there is a matter of particular interest please contact us for further information, especially before travelling any distance to view. Map reproduced by permission of Geographers A-Z Map Co Ltd. Licence No. A0514. This map is based upon Ordnance Survey maps with the permission of the controller of Her Majesty's Stationary Office.