

18a Fairfield Road, Petts Wood, Orpington, Kent, BR5 1JR

## Property Images



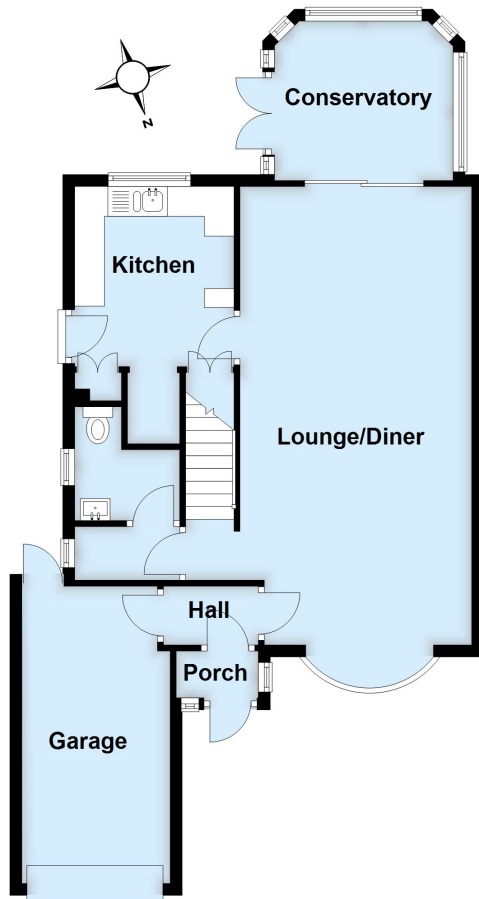






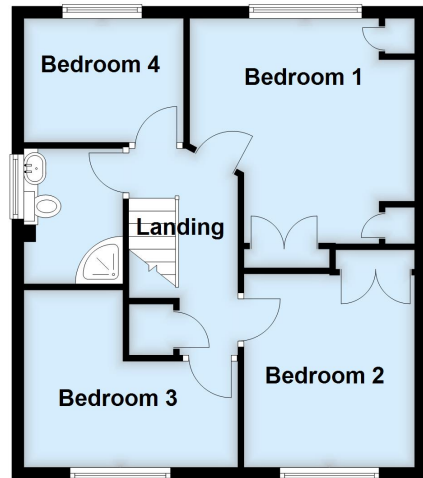
## Ground Floor

Approx. 72.2 sq. metres (776.7 sq. feet)



## First Floor

Approx. 49.6 sq. metres (533.9 sq. feet)



Total area: approx. 121.8 sq. metres (1310.6 sq. feet)

This plan is for general layout guidance and may not be to scale.  
Plan produced using PlanUp.