



43 Struan Place, Inverkeithing, KY11 1NF
Offers Over £65,000

Key Features

 1 Bedroom

 1 Public

 1 Bathroom

- A one bedroom upper flat, conveniently located within the popular coastal town of Inverkeithing
- The property is in need of upgrade and could make a good investment property or first time home
- For commuters, Inverkeithing Railway Station can be reached on foot with Park and Ride facilities also available a short walk away
- Easy access to the M90 motorway with routes to Edinburgh and Glasgow
- Main door entry and small private outdoor area
- Range of amenities within Inverkeithing including various, shops, restaurants, leisure centre in nearby Dalgety Bay and lovely coastal walks along the Firth of Forth
- Private parking space
- Storage within the hall
- Living room and galley style kitchen
- Double bedroom with storage
- Bathroom
- EPC Rating - E , Council Tax Band – A



Location

Nestled on the scenic southern shore of the Firth of Forth, Inverkeithing offers a perfect balance of charming village life with excellent commuter access. This thriving town in Fife is ideally positioned for those seeking a peaceful residential setting, while still benefiting from outstanding transport links to Edinburgh, Glasgow, and beyond.

Inverkeithing is well-served by local amenities, including shops, schools, and health services, providing a welcoming environment for families and professionals alike. The town itself boasts a rich history, with landmarks such as the stunning Inverkeithing Abbey and the nearby Forth Bridges, adding to its appeal.

One of the standout features of Inverkeithing is its proximity to transport hubs. The town benefits from its own railway station, offering direct services to Edinburgh in just 20 minutes, making it an ideal location for commuters. Additionally, with easy access to the M90 motorway, residents can travel to key cities in Scotland with ease.

Whether you're looking for a traditional home in the heart of the town or a more modern property with stunning views of the Firth of Forth, Inverkeithing has something for everyone. Its combination of natural beauty, history, and exceptional connectivity makes it one of Fife's most desirable places to live. As an estate agent, I can confidently say that Inverkeithing is the perfect location to consider for those looking to settle in a thriving yet peaceful part of Scotland.

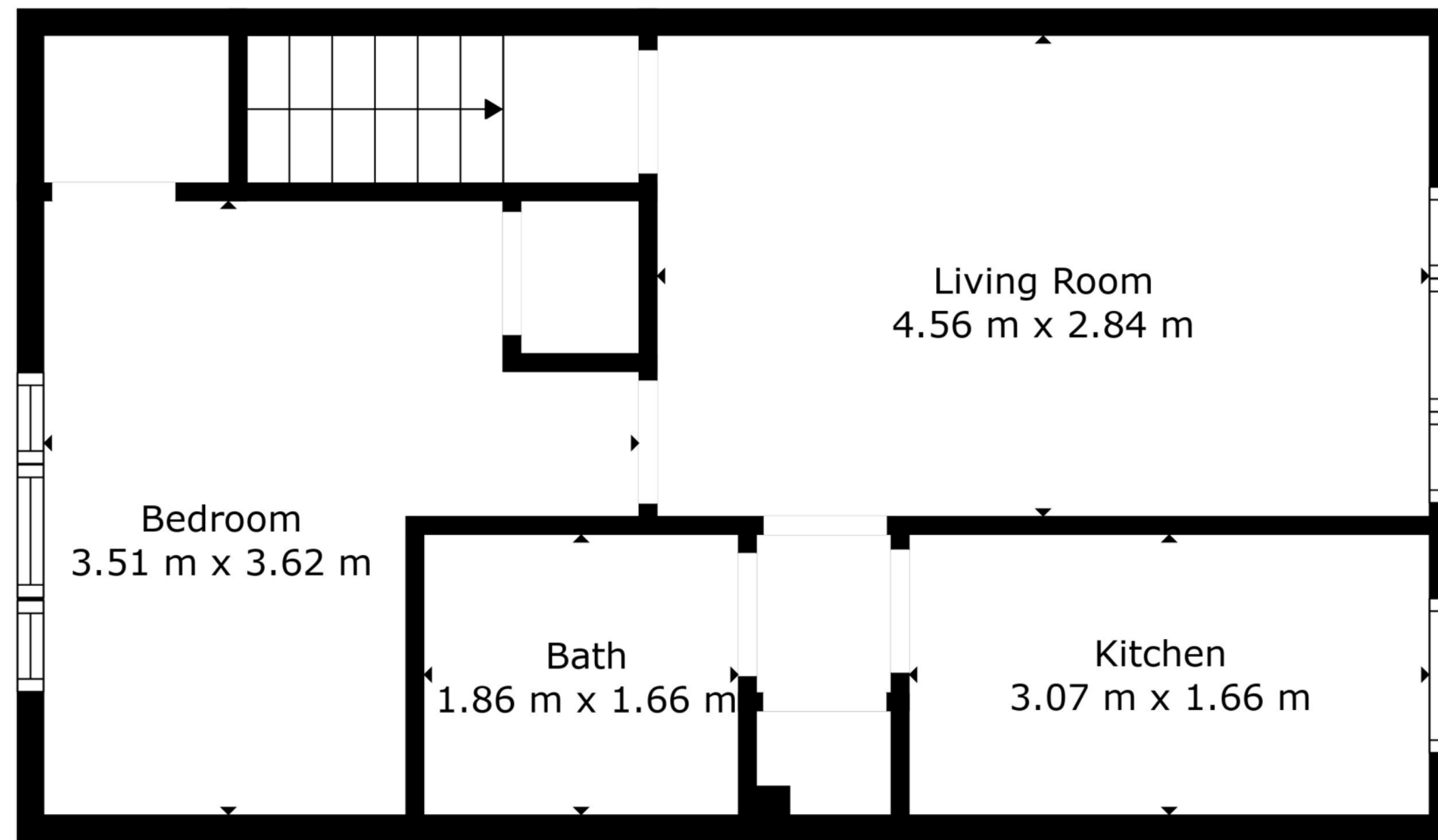


Enquiries

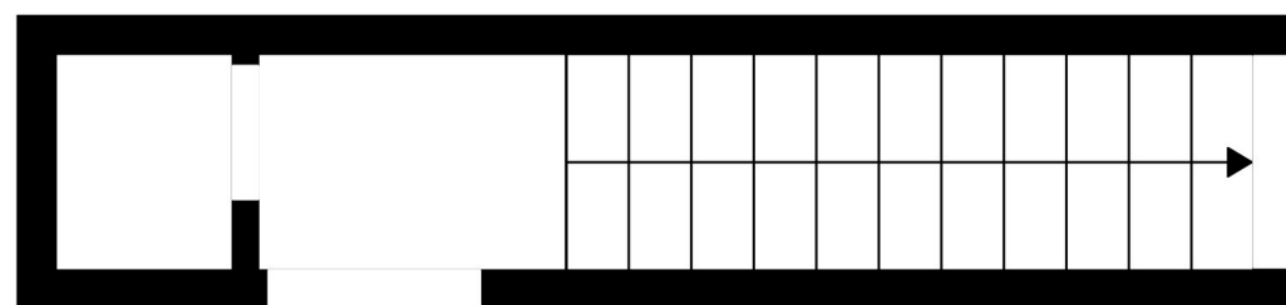
 01383 629720

 info@maloco.co.uk

 maloco.co.uk



Floor 2



Floor 1



Floor Plan Created By Cubicasa App. Measurements Deemed Highly Reliable But Not Guaranteed.



Floorplans are for illustrative purposes only. Measurements are deemed highly reliable but not guaranteed.