







A delightful, mid-terrace mews home in cul-de-sac location, close to Northwich town centre.

- Mid-Terrace Mews
- Good Size Living Room
- Kitchen Dining Room
- Two Double Bedrooms
- Wet-Room/Bathroom
- Private Rear Garden
- Private Parking Space

### Description

A delightful, mid-terrace mews house, situated in a small cul-de-sac, close to Northwich town centre. The property is offered in a clean and tidy condition and features gas central heating and PVCu double glazed windows. Comprises: Entrance hall with storage cupboard, good size living room with fireplace and kitchen dining room on the ground floor along with a landing, two double bedrooms and a wet-room/bathroom on the first floor. Externally there is a small open plan front garden and a private rear garden, which has mature shrubs and trees and is not overlooked from the rear. There is a private parking space in front of the house.





**Location**

Local amenities are well catered for and include Winnington Convenience Store and the BP petrol station, which provide all the necessary day to day essentials and there is a new local centre with more facilities on the Winnington Urban Village. Winnington Park Community Primary School serves the area and there are two local high schools located in Hartford and Weaverham, these schools are rated 'good' in the current Ofsted reports. Two railway stations serve the area with the West Coast Main Line service running through Hartford, enabling access to London within two hours. Trains to Manchester and Chester run from Greenbank and Northwich stations. The A556 and A49 easily facilitate access to the region's major road network with Manchester and Liverpool airports both within 20 miles.

**Tenure**

FREEHOLD

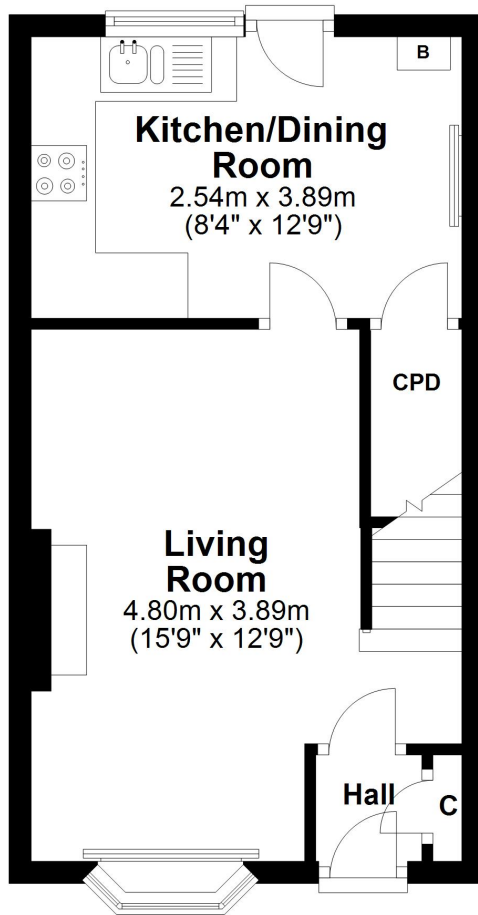
**EPC Rating: C**





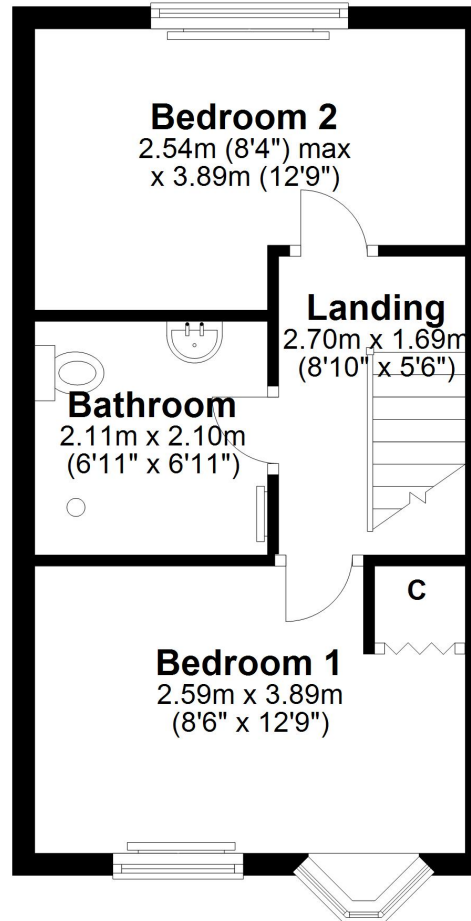
## Ground Floor

Approx. 29.0 sq. metres (312.4 sq. feet)



## First Floor

Approx. 29.0 sq. metres (311.7 sq. feet)



Total area: approx. 58.0 sq. metres (624.1 sq. feet)



Williams Estates is the trading name of Williams Estates (Ltd). Registered address 33, The Green, Hartford, Northwich, Cheshire, CW8 1QA.

Reg number 07682683. Director Andrew P Williams