

FOR SALE

GUIDE PRICE £2m



RESIDENTIAL DEVELOPMENT OPPORTUNITY ADJACENT TO HAMPSTEAD HEATH

**Cleared site with planning consent for 2x
4 bed/3 bath houses in prime location**

**LAND ADJACENT TO JACK STRAW'S CASTLE,
NORTH END WAY, HAMPSTEAD, LONDON, NW3 7ES**



Jeremy Leaf & Co
863 High Road, Finchley N12 8PT

020 8446 4295
land@jeremyleaf.co.uk

Cleared site of approximately 0.008 ha (0.02 acre) with planning consents (Ref: APP/X5210/W/20/3261840 and APP/X5210/Y/20/3261841) for a residential development of two 4-bedroom houses of approximately 139.82 sq. m (1505 sq. ft) and 129.97 sq. m (1399 sq. ft).

The site is situated within the London Borough of Camden as part of the Hampstead Conservation Area, adjacent to the Grade II listed Jack Straws Castle Public House and Hampstead Heath.

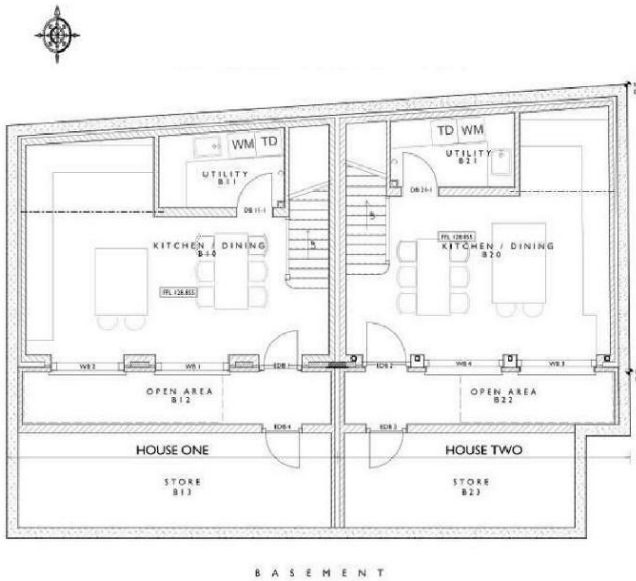
Proposed Schedule of Accommodation			
		Approx sq. m.	Approx sq. ft.
House 1	4 bedroom / 3 bathroom	139.82	1505
House 2	4 bedroom / 3 bathroom	129.97	1399

Hampstead Underground station (Northern line) is around 0.4 miles away and Hampstead Heath Overground station about 0.9 miles away providing easy access to central London.

Offers in the region of £2,000,000 for the long leasehold interest of 999 years with vacant possession subject to contract should be submitted to owners' agents Jeremy Leaf & Co from whom further planning details, plans, viewing arrangements etc are available upon request.

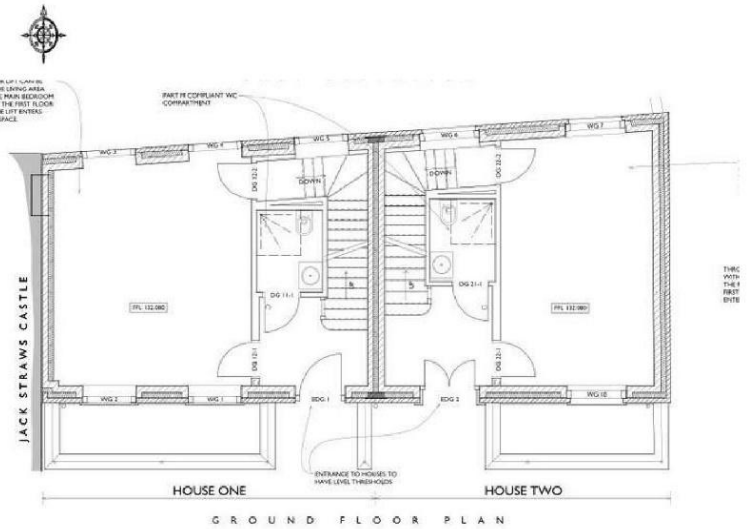
CONSENTED FLOOR PLANS

BASEMENT FLOOR



Not to Scale

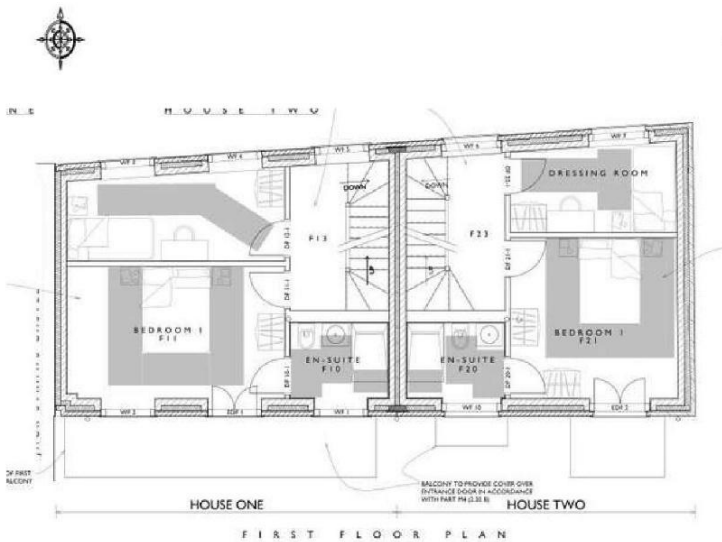
GROUND FLOOR



Not to Scale

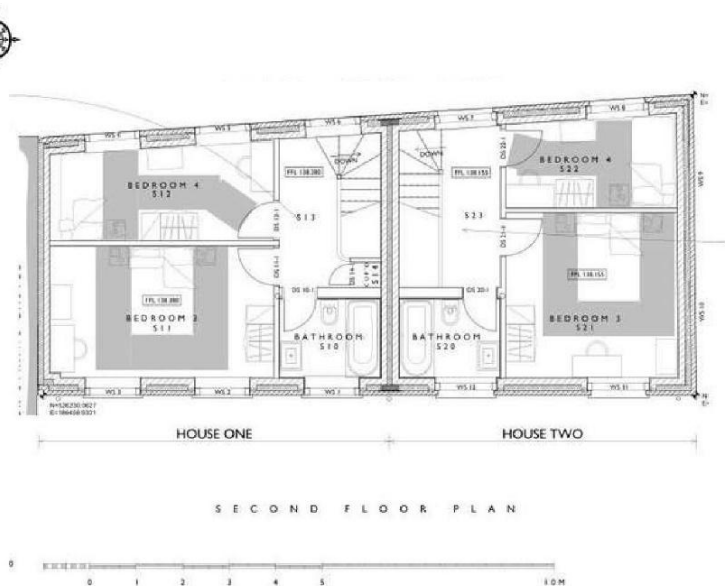
CONSENTED FLOOR PLANS

FIRST FLOOR

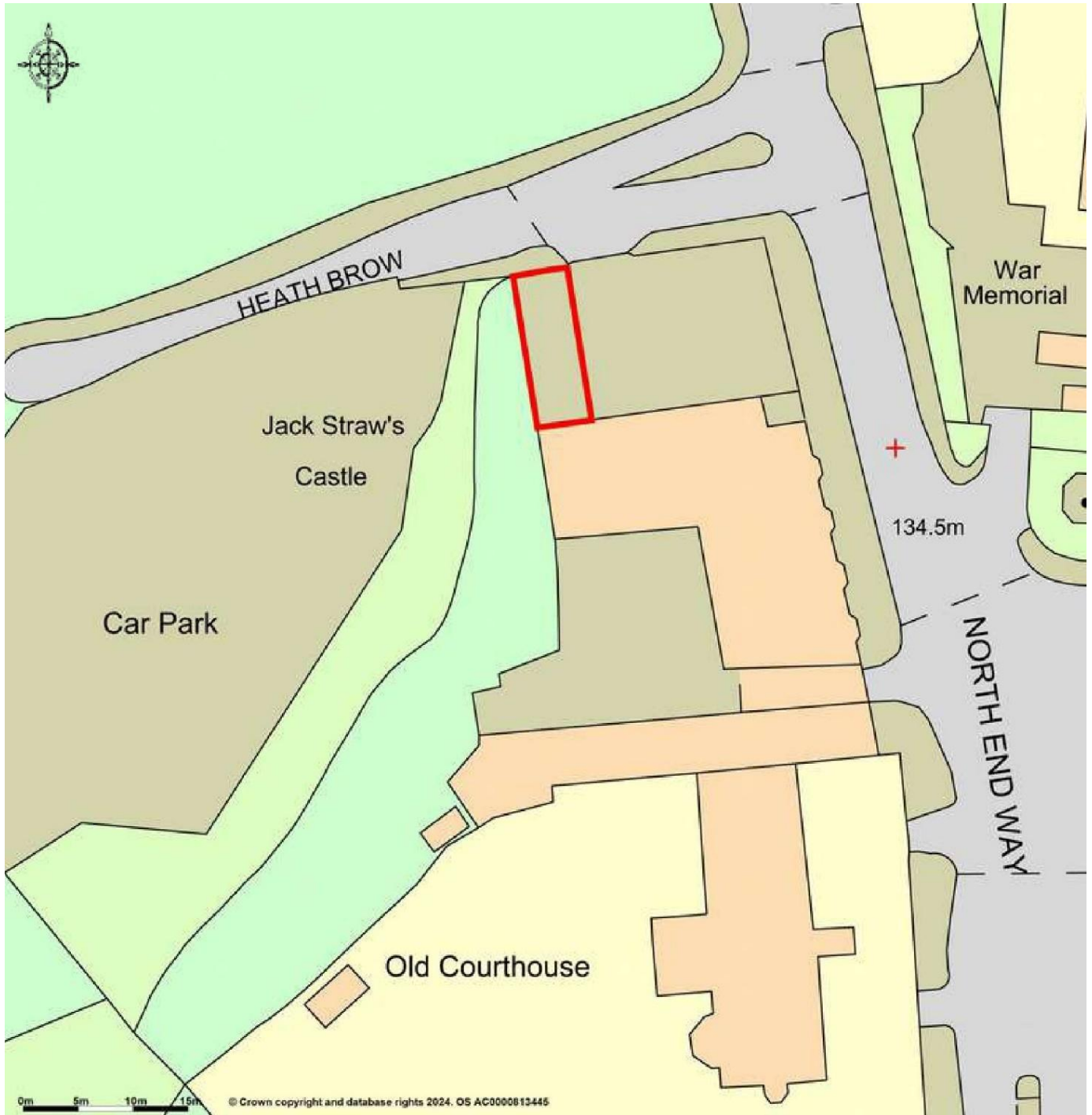


Not to Scale

SECOND FLOOR



Not to Scale



Consumer Protection from Unfair Trading Regulations 2008

Jeremy Leaf & Co., for themselves and for their client, whose agent they are, give notice that:

Under the terms of the Anti Money Laundering Act 2007, intending purchasers will be asked to produce identification documentation at a later stage and we would ask for your co-operation in order that there will be no delay in agreeing the sale.

These particulars do not constitute any part of an offer or a contract.

All statements contained in these particulars are made without responsibility on the part of Jeremy Leaf & Co or their client.

None of the statements contained in these particulars is to be relied upon as a statement or representation of fact.

Please note we have not tested the services or any of the equipment or appliances in this property, accordingly we strongly advise prospective buyers to commission their own survey or service reports before finalising their offer to purchase.

Any intending purchaser or tenant must satisfy himself by inspection, or otherwise as to the correctness of each of the statements contained in these particulars.

No person in the employment of Jeremy Leaf & Co has any authority to make any representation or warranty whatsoever in relation to this property.

Unless otherwise stated, all prices and rents are quoted exclusive of Value Added Tax (VAT). Any intending purchasers or lessees must satisfy themselves independently as to the incidents of VAT in respect of any transaction.

This document is not intended for distribution and may not be reproduced or further distributed or published for any purpose. In particular, any tenants detailed in this property should not be approached without prior written permission.