

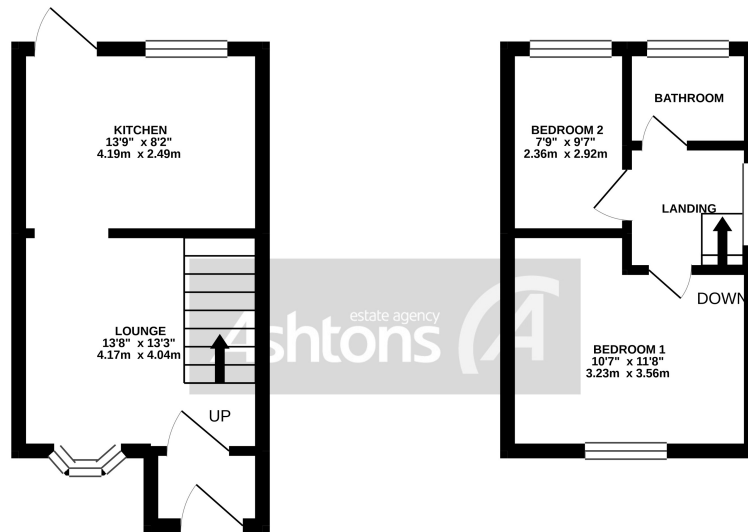
New



*Mansfield Close, Birchwood. WA3 6QN.
£179,000*

Two Bedroom Semi-Detached | Driveway to the front | Well presented home | Cul de sac location | Sought after location in Birchwood |





Whilst every attempt has been made to ensure the accuracy of the floorplan contained here, measurements of doors, windows, rooms and any other items are approximate and no responsibility is taken for any error, omission or mis-statement. This plan is for illustrative purposes only and should be used as such by any prospective purchaser. The services, systems and appliances shown have not been tested and no guarantee as to their operability or efficiency can be given.
Made with Metropix ©2020

The property benefits from being semi-detached, offering a sense of privacy and a quieter atmosphere located on a quiet cul de sac. A neatly landscaped front garden and a private driveway provide ample space for parking.

Upon entering the house, you'll step into a bright and inviting porch that sets the tone for the rest of the home. The ground floor offers a well-proportioned living room, thoughtfully designed to maximize comfort and relaxation. Large windows flood the room with natural light, creating a warm and inviting atmosphere.



Contact your local office to arrange a viewing:

Padgate: 01925 479334
Great Sankey: 01925 454300
Winwick: 01925 232146
Stockton Heath: 01925 453400
St.Helens: 01744 754120
Wigan: 01942 498862
Culcheth: 01925 764744
Ashton-In-Makerfield: 01942 364446
Newton-Le-Willows: 01925 907770
Commercial Office: 01925 907709
Lettings Head Office: 01925 873533
Financial Services: 01925 221234

Viewing Arrangements

Viewing is strictly by appointment only through Ashtons Estate Agency.

Disclaimer Property Details

These particulars, whilst being believed to be accurate are set out as a general outline only for guidance and do not constitute any part of an offer or contract. Intending purchasers should not rely on them as statements of representation of fact, but must satisfy themselves by inspection or otherwise as to their accuracy. We have not carried out a detailed survey nor tested the services, appliances and specific furnishings. The measurements given are approximate. No person in this firm's employment has the authority to make or give any representation or warranty in respect of the property.

All details, photographs and floorplans are the copyright of Ashtons Estate Agency.



How much you can borrow?
Speak to a mortgage expert in your local office.

Ashtons Financial Services

Ashtons.net rightmove

PrimeLocation.com Zoopla.co.uk

Ashtons

In summary, this two-bedroom semi-detached house on Mansfield Close in Birchwood presents a wonderful opportunity to embrace comfortable living in a desirable location. With its well-designed living spaces, modern conveniences, and easy access to local amenities, this property is sure to captivate those seeking a cozy and inviting home.