



Lansdown Road

Lansdown Road

New Court, Lansdown Road, Cheltenham, GL50 2JG

£199,950 Leasehold

A luxury, first floor apartment with access to an east facing balcony, located within the popular New Court Development, exclusive for over 65s.

OVER 65s DEVELOPMENT • luxury apartment • reception hall • 22' living room • kitchen • double bedroom • first floor • 'Jack & Jill' shower/bathroom • exclusive use of balcony • lift access to all floors

Description

A super first floor, double bedroom apartment, situated within this prestigious development for the over 65s. This modern apartment is located within the Montpellier district of Cheltenham, close to the town centre with all its excellent amenities, and offers stylish, contemporary living throughout. The accommodation includes a reception hall; living/dining room with door leading to the east facing, glazed balcony; an attractive, well equipped kitchen with quality integrated appliances and worktop space; a double bedroom with built-in double wardrobe and a door leading to the four piece 'Jack & Jill' shower/bathroom. Externally, there are beautiful, manicured communal grounds. New Court offers two stunning aspects; a beautifully restored Grade II former manor house featuring a bar, restaurant, library, and wellbeing suite exclusively for homeowners; and there's the modern rear wing which houses the apartments. Residents can also rely on the 24 hour concierge service for comfort.

Further Information:

Lease 125 years from 2016. **Service Charge** £741.70 per month (reviewed annually). **Ground Rent** £500 per annum. **Freeholder** Sanctuary Housing Association. **Management Company** Sanctuary Housing Association. **Local Authority** Cheltenham Borough Council. **Tax Band** C. **Electricity** Mains. **Water** Mains. **Sewerage** Mains. **Heating** Gas Central & Underfloor Heating. **Broadband** Not Connected to the property. Purchasers should carry out their own investigations regarding the suitability of these services.



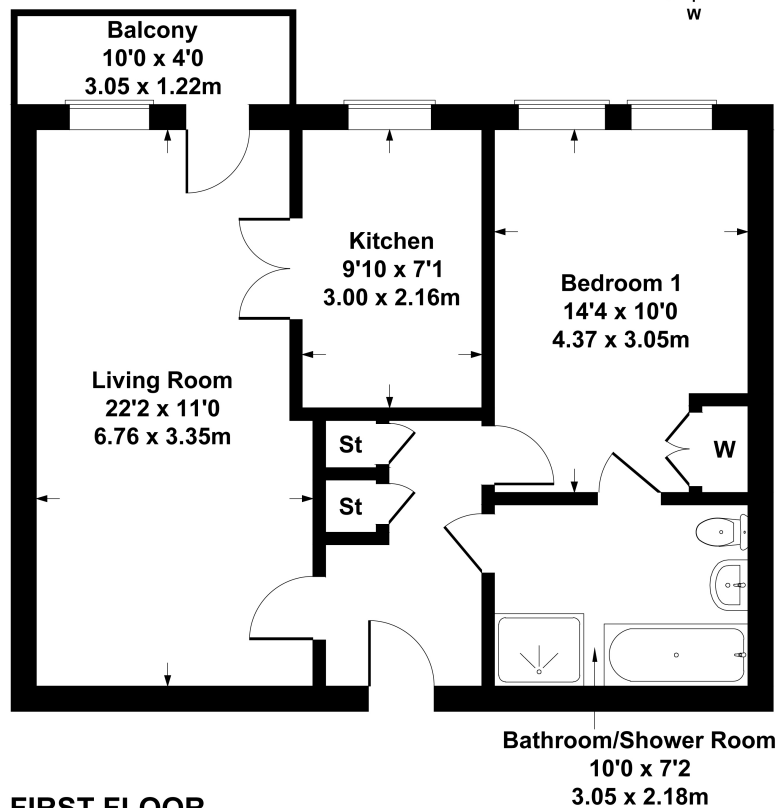
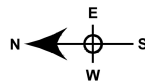


Situation

A premier central location in the heart of Montpellier, yards from the fashionable bars, restaurants, boutiques, and parks. Cheltenham is a vibrant Regency town, best known for its beautiful architecture, excellent shopping, and horse racing at the world famous Prestbury Park Racecourse. Cheltenham also plays host to the music, jazz, science, and literature festivals.

25 New Court

Approximate Gross Internal Area
618 sq ft - 57 sq m

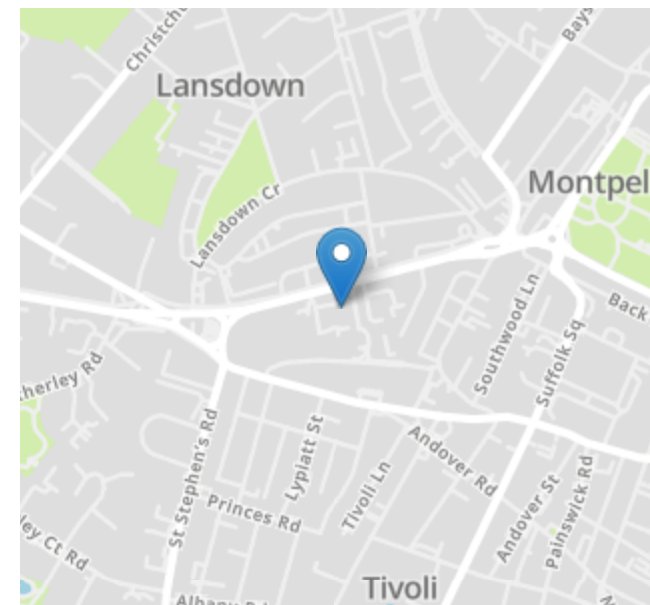


FIRST FLOOR

SKETCH PLAN FOR ILLUSTRATIVE PURPOSES ONLY

All measurements walls, doors, windows, fittings and appliances, their sizes and locations, are approximate only. They cannot be regarded as being a representation by the seller, nor their agent.

Produced by Potterplans Ltd. 2023



Energy Efficiency Rating		
	Current	Potential
Very energy efficient - lower running costs		
(92-100) A		
(81-91) B	86	86
(69-80) C		
(55-68) D		
(39-54) E		
(21-38) F		
(1-20) G		
Not energy efficient - higher running costs		
England, Scotland & Wales	EU Directive 2002/91/EC	

Nick Griffith Estate Agents for themselves and for the vendors or lessors of this property whose agents they are, give notice that: (i) The particulars are produced in good faith, are set out as a general guide only and do not constitute part of any contract. (ii) No person in the employment of Nick Griffith Estate Agents has any authority to make any representation or warranty whatever in relation to this property.