



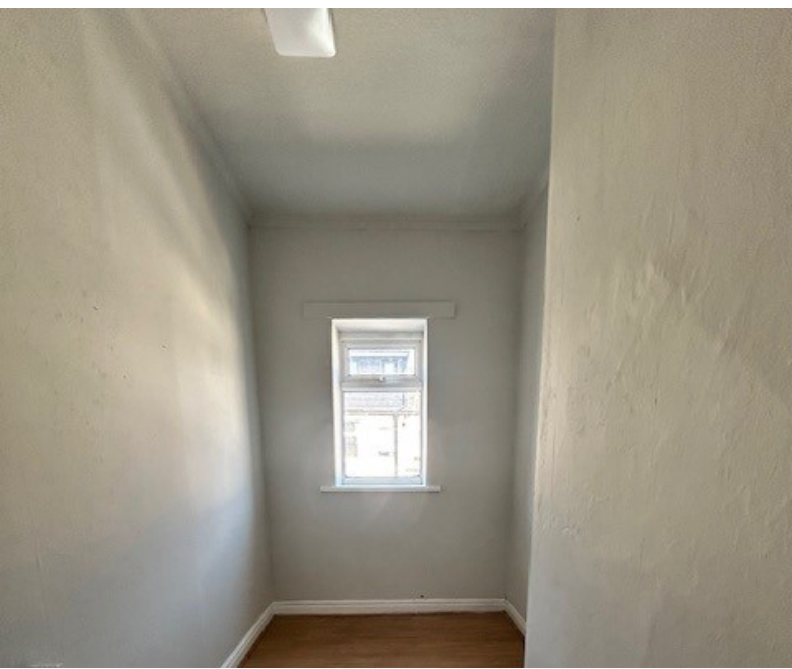
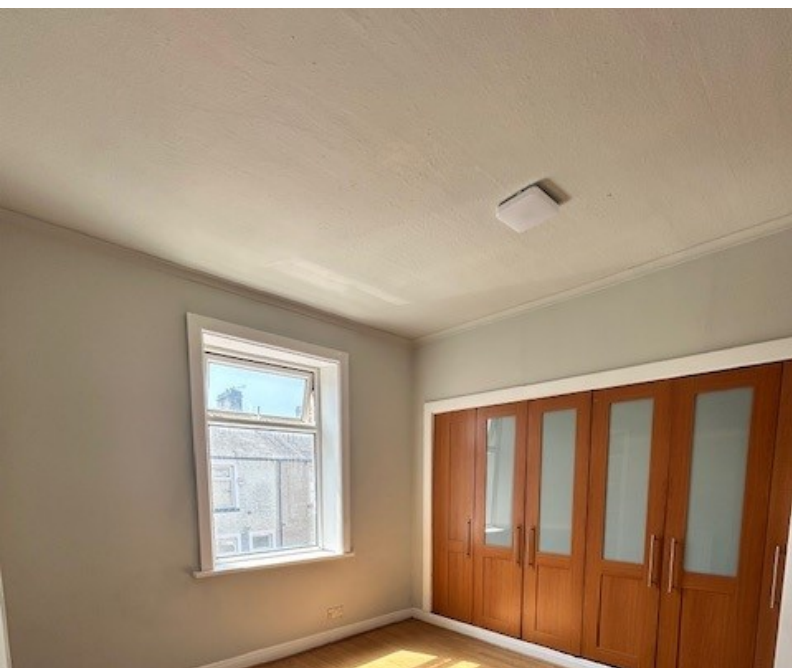
34 Ferndale Street, Burnley, Lancashire. BB10 3EP

- EPC - D
- Council Tax - Band A
- Deposit -£695



PROPERTY DESCRIPTION

We are delighted to offer for let this three bedroom mid terrace home, located just off the ever popular Queen Victoria Road. The accommodation comprises of: two separate reception rooms, a fitted kitchen, three first floor bedrooms, and a fully fitted three piece bathroom suite. The property is warmed by gas central heating and is Upvc double glazed throughout. EPC - D. Deposit £695. Early viewing is considered a must!



ROOM DESCRIPTIONS

Ground Floor

Entrance Hallway

Sitting Room

Dining Room

Kitchen

First Floor

Bedroom One

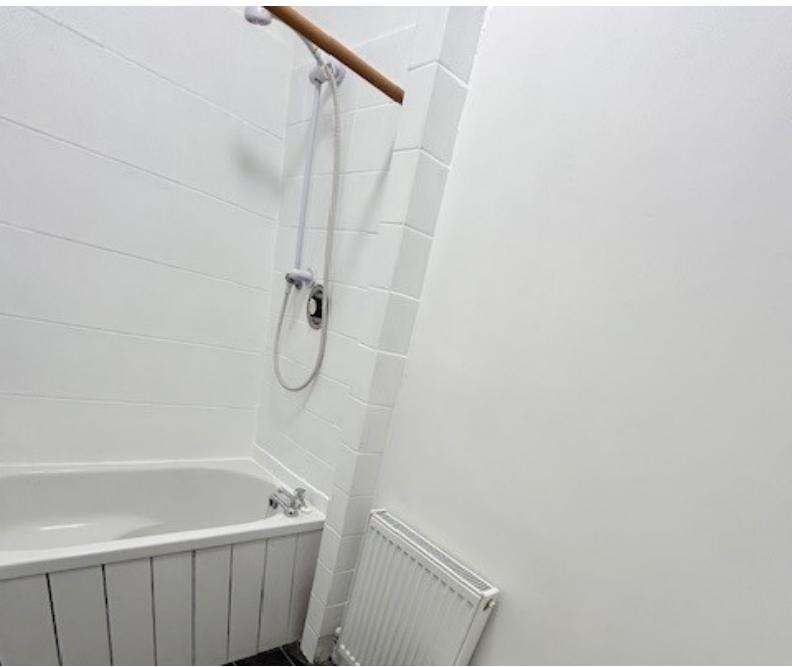
Bedroom Two

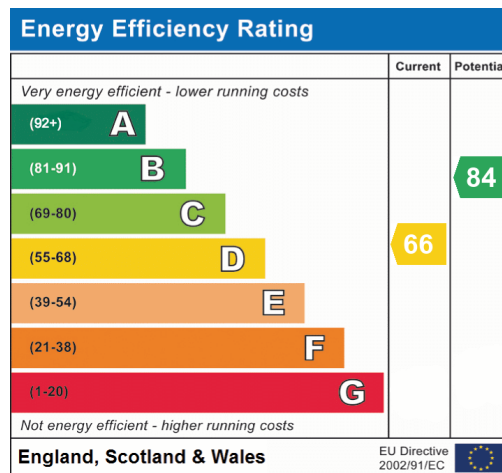
Bedroom Three

Bathroom

Outside

Yard





Burnley
31, Parker Lane, Burnley, BB11 2BU
01282 427445
info@jonsimon.co.uk