



Guide Price £500,000 Freehold



14 Cranbrook Road, Bexleyheath, Kent
DA7 5EY



PROPERTY DESCRIPTION

GUIDE PRICE £500,000 - £525,000 • RE/MAX SELECT are delighted to offer for sale this 1930s semi-detached house, close to schools, amenities, and transport links including Bexleyheath station.

This property comprises 3 bedrooms, living room, dining room, fitted kitchen, upstairs family bathroom, and separate cloakroom. Further benefits include off street parking, triple glazing, and 75ft rear garden. Total Internal Area approx: 964.12 sq ft (89.57 sq m). CHAIN FREE.





ROOM DESCRIPTIONS

Ground Floor

Entrance Hall

Carpeted, radiator, storage cupboard.

Living Room

Carpeted, radiator, electric fireplace, triple glazed bay window.

Dining Room

Carpeted, 2 radiators, electric fireplace; double glazed patio doors leading to Rear Garden.

Kitchen

Vinyl flooring, triple glazed windows; range of wood wall and base units with granite-effect worktops and tiled splashback; electric cooker with gas hob, fridge, washing machine; wall-mounted boiler.

Lean-to

Electrical power; access to Front and Rear Gardens.

First Floor

Landing

Carpeted; access to loft.

Bedroom

Carpeted, radiator, triple glazed bay window.

Bedroom

Carpeted, radiator, triple glazed windows.

Bedroom

Carpeted, radiator, triple glazed windows.

Bathroom

Vinyl flooring, tiled walls, radiator; bath with mixer tap and power shower over; wash-hand basin, triple glazed windows.

Cloakroom

Vinyl flooring, tiled walls, w/c, triple glazed window.

External

Front Driveway

Off street parking.

Front Garden

Lawn; range of flowerbeds and shrubs.

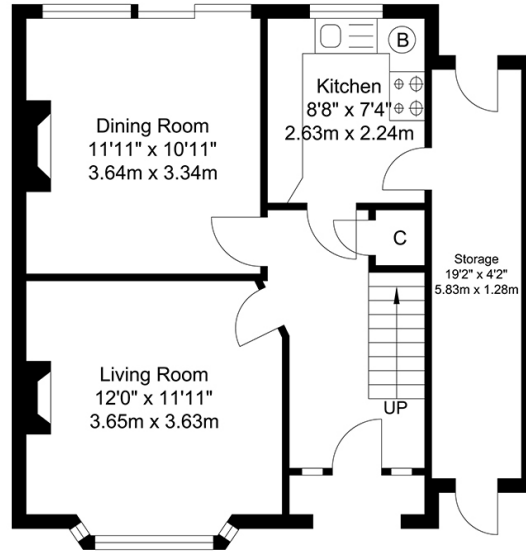
Rear Garden

Approximately 75ft; patio, lawn; range of mature trees and shrubs; 2 storage sheds.

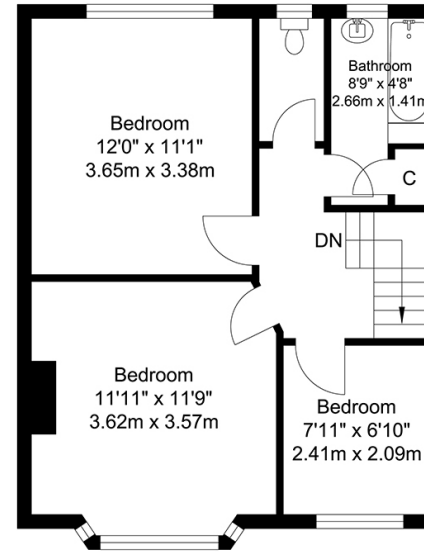
Information

- Close to sought-after schools incl 4 grammar schools
- Easy access to A2 / M25
- 0.7 miles (approx) to Bexleyheath Station (direct to 5 London Terminal stations)
- 1.5 miles (approx) to Abbey Wood Station with Crossrail / Elizabeth Line & Thameslink
- 1.3 miles (approx) to Danson Park & Lake
- 1.1 miles (approx) to Broadway Shopping Centre
- Council Tax: Band E

FLOORPLAN



Ground Floor
Approximate Floor Area
525.38 SQ.FT.
(48.81 SQ.M.)



First Floor
Approximate Floor Area
438.73 SQ.FT.
(40.76 SQ.M.)

TOTAL APPROX FLOOR AREA 964.12 SQ. FT / 89.57 SQ. M
For Identification Purposes Only.

