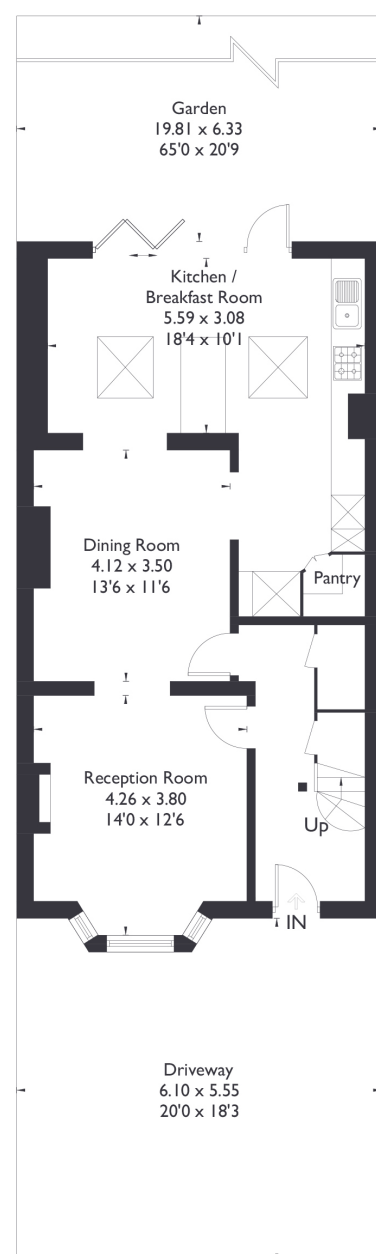
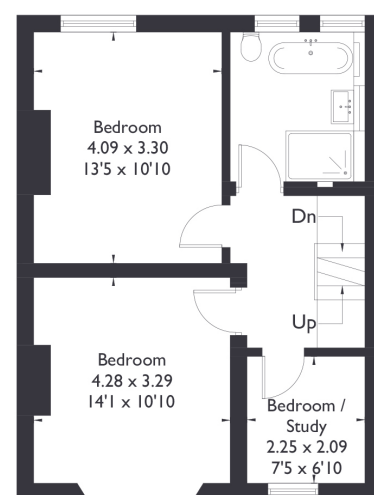


Swyncombe Avenue, W5

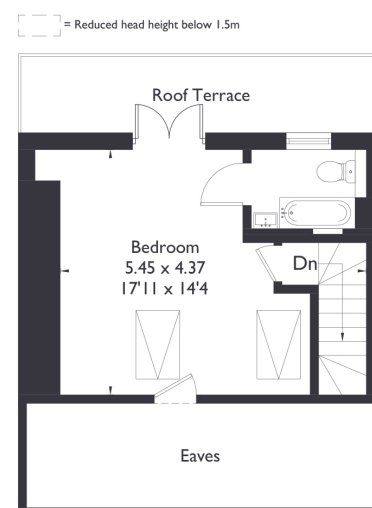
Approximate Floor Area = 140.4 sq m / 1511 sq ft (Excluding Eaves)



Ground Floor



First Floor



Second Floor



4 BEDROOM HOUSE

Swyncombe Ave, W5

£1,200,000

Welcome to this beautifully renovated four bedroom, two bathroom terraced home, complete with an additional downstairs W/C. Renovated within the last year to a high standard, the property is offered in excellent condition and chain-free.

Enjoy a bright south-facing garden that captures the evening sun, perfect for relaxing or entertaining. To the front, the property benefits from a private driveway with space for two cars.

FEATURES

- Four Bedrooms
- Two Bathrooms/Downstairs W/C
- Open Plan Kitchen
- South Facing Garden
- Northfields Station (Piccadilly Line)
- Ealing Fields High School/ Gunnersbury Catholic School
- EPC Rating C



4 BEDROOM HOUSE

Swyncombe Ave, W5

Upstairs, you'll find two double bedrooms, a single bedroom, and a stunning master suite on the top floor, featuring its own shower room and a private terrace.

Ideally located with easy access to Northfields' array of shops, cafés, and transport links, including Northfields Station and the Great West Road. The property also falls within the catchment areas for the highly regarded Ealing Fields High School and Gunnersbury Catholic School.

