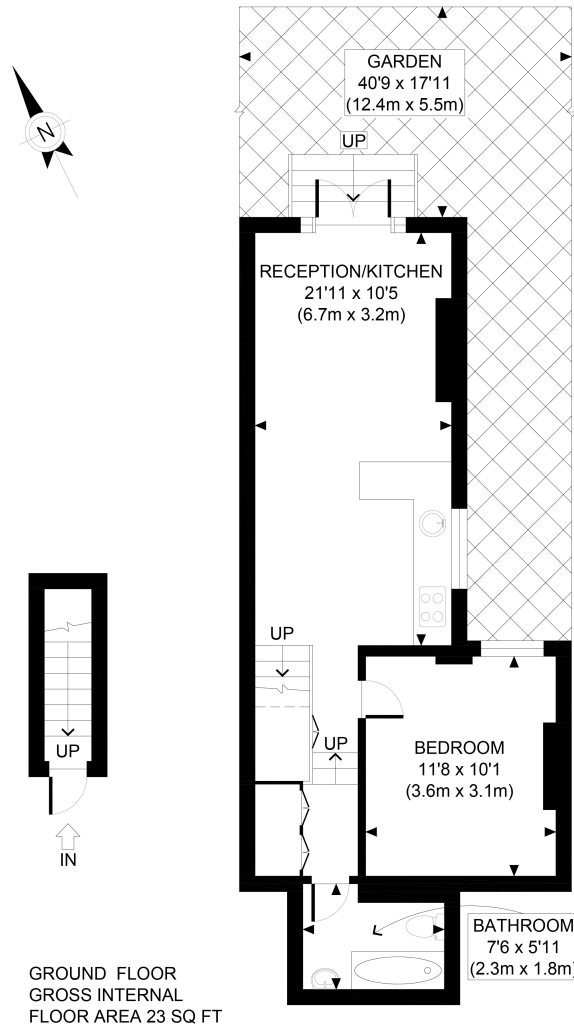




Garden Flat, Victoria Road, London, N22 7XF

£1,300 pcm

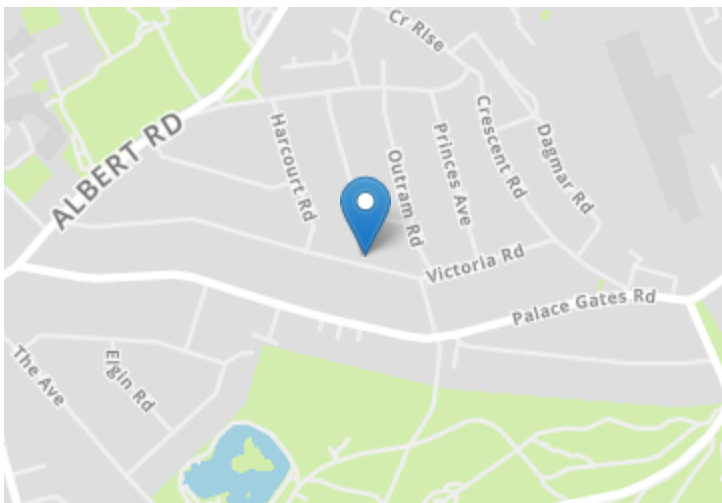
- Private Garden
- Double Bedroom
- Bright & Spacious
- Large Kitchen/Living Area
- Close to Alexandra Park
- Available - 8th March 2022



APPROX. GROSS INTERNAL FLOOR AREA 489 SQ FT / 45 SQM

Ref: Copyright **photoplan**

Disclaimer: Floor plan measurements are approximate and are for illustrative purposes only. While we do not doubt the floor plan accuracy and completeness, you or your advisors should conduct a careful, independent investigation of the property in respect of monetary valuation



Energy Efficiency Rating		Current	Potential
Very energy efficient - lower running costs			
(92 to 100)	A		
(81 to 91)	B		
(69 to 80)	C	71	78
(55 to 68)	D		
(39 to 54)	E		
(21 to 38)	F		
(1 to 20)	G		
Not energy efficient - higher running costs			
England, Wales & N.Ireland		EU Directive 2002/91/EC	