



£1,500 pcm Leasehold
1 bedroom flat

Bargery Road
Catford

Read all about it...

A 1 bedroom first floor flat ideal for a couple or single professional. The property is in good order throughout with a modern kitchen with fully integrated appliances and bathroom suite. Located in the heart of the Culverley Conservation Area approximately 0.7 miles from the dual stations of Catford and Catford Bridge offering commuter links to Central London and the City.

Council Tax: Lewisham Band B | **Available:** 9th October | **Unfurnished**

FIRST FLOOR

Entrance Hall

Fitted carpet, radiator, double glazed bay window and pendant light.

Kitchen

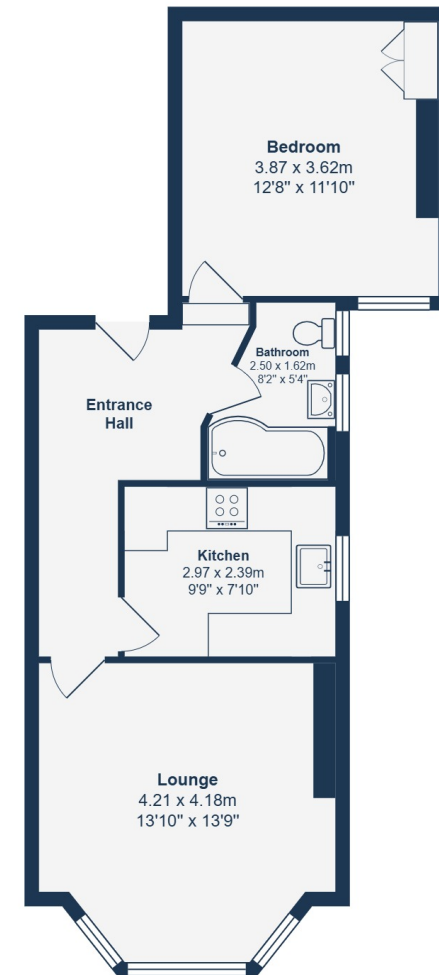
Wooden floor, radiator, matching units, integrated electric hob/cooker, window, pendant light.

Bathroom

Wooden floor, 3 piece suite with over head shower, window, pendant light.

Bedroom

Wooden floor, radiator, window, fitted wardrobe, pendant light.



Total Area: 50.7 m² ... 546 ft²

Drawn for Stanfords Sales & Lettings

This floorplan is for illustrative purposes only. Whilst every effort has been made to ensure the accuracy of the plan, the dimensions and total area are approximated only and should not be relied upon.

Like what you see?

Call **020 8690 3656** or email us at **catford@stanfordestates.london**
to arrange a viewing or request further information

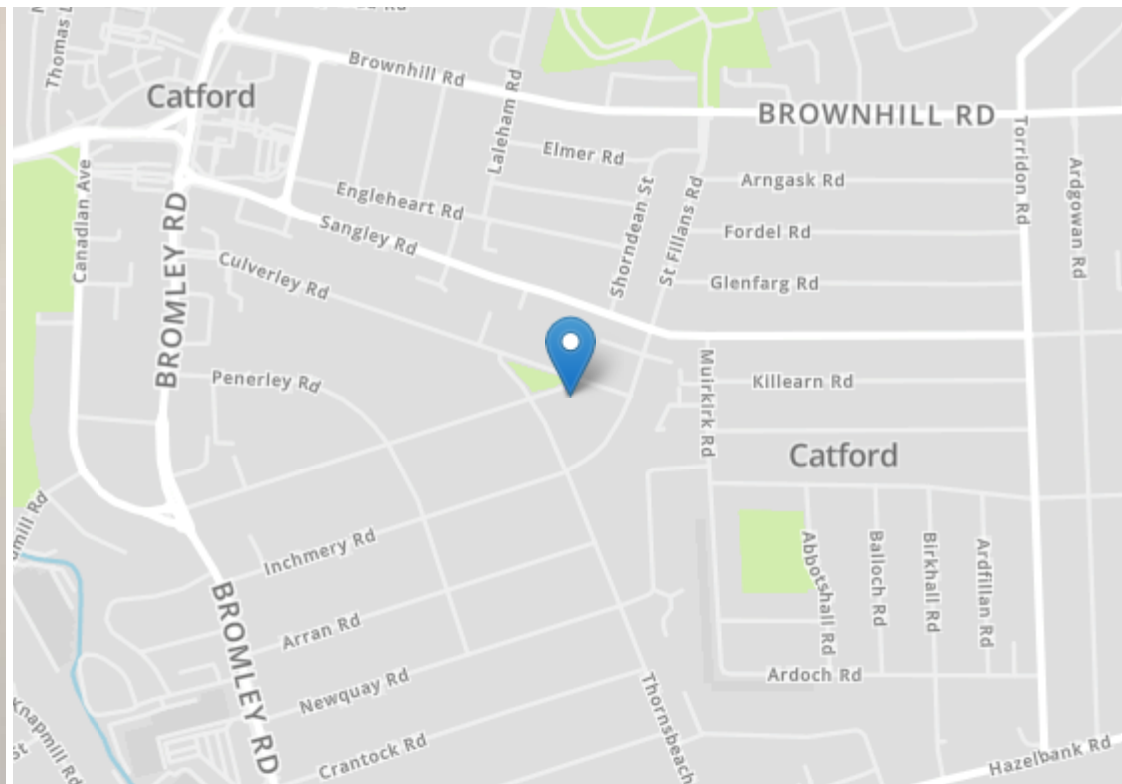
www.stanfordestates.london



AVAILABLE: 9TH
OCTOBER
FIRST FLOOR FLAT
0.7MI TO TWIN
CATFORD STATIONS

UNFURNISHED
1 BEDROOM





Energy Efficiency Rating		
	Current	Potential
Very energy efficient - lower running costs		
(92+) A		
(81-91) B		
(69-80) C		
(55-68) D		
(39-54) E		
(21-38) F		
(1-20) G		
Not energy efficient - higher running costs		
	71	79
EU Directive 2002/91/EC		
England, Scotland & Wales		



Robert Stanford Estates property particulars are produced in accordance with the Consumer Rights Act (2015) and should not be construed as a contract or offer. The contents of these property particulars are to provide a general illustration only and are inconsequential to any decisions to purchase a property. A potential buyer accepts that all representations made by these particulars are made in good faith on behalf of the seller and require verification by a buyers' legal and professional representatives prior to an exchange of contracts. We offer no guarantees for any structural component, service or appliance and while we make every effort to take accurate measurements and distances, they are illustrative only. Any reliance you place on information within these particulars is therefore strictly at your own risk.