



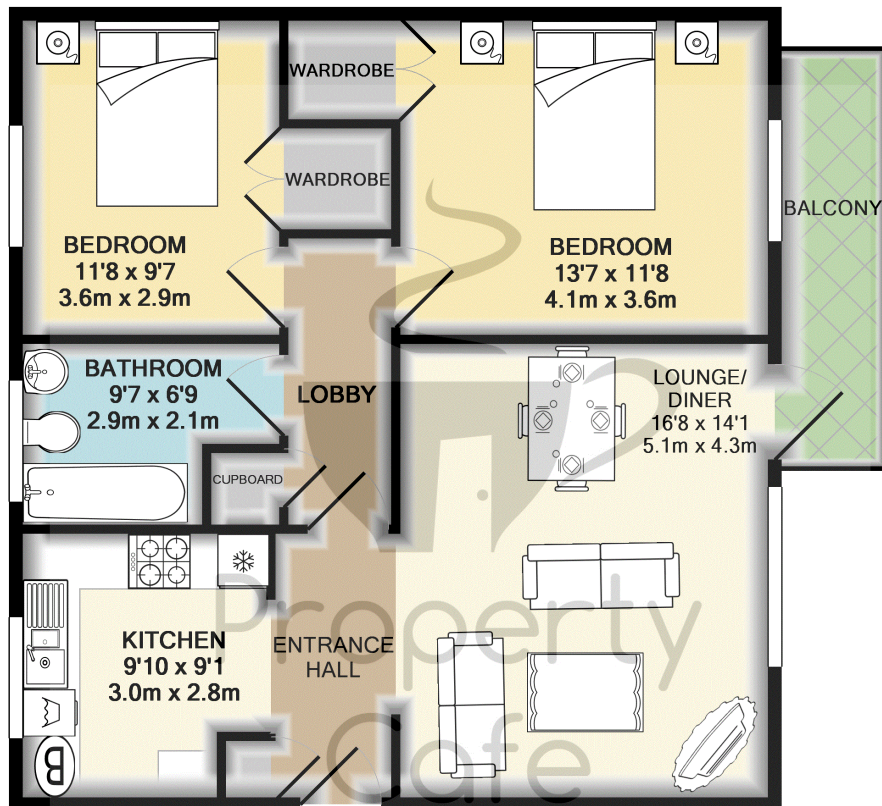
15 Ewell Court Sutton Place, Bexhill On Sea,  
East Sussex, TN40 1PA

**£299,950**



- Spacious Seafront Apartment
- Well Presented Throughout
- Two Good Size Double Beds
- Modern Re-Fitted Kitchen
- 16ft X 14ft Lounge Diner
- Balcony with Lovely Sea View
- Secure Communal Entrance
- SOUGHT AFTER DEVELOPMENT
- Long Lease (950 Years Remaining)
- Sold with a Sold Share Of Freehold
- Single Garage En-Bloc
- Gas Central Heating & D.Glazed
- Well Run Block wih Low Outgoings
- Close To Ravenside Shopping
- Good Bus Service into Town
- Viewing Highly Recommended





TOTAL APPROX. FLOOR AREA 767 SQ.FT. (71.3 SQ.M.)

Whilst every attempt has been made to ensure the accuracy of the floor plan contained here, measurements of doors, windows, rooms and any other items are approximate and no responsibility is taken for any error, omission, or mis-statement. This plan is for illustrative purposes only and should be used as such by any prospective purchaser. The services, systems and appliances shown have not been tested and no guarantee as to their operability or efficiency can be given

Made with Metropix ©2014