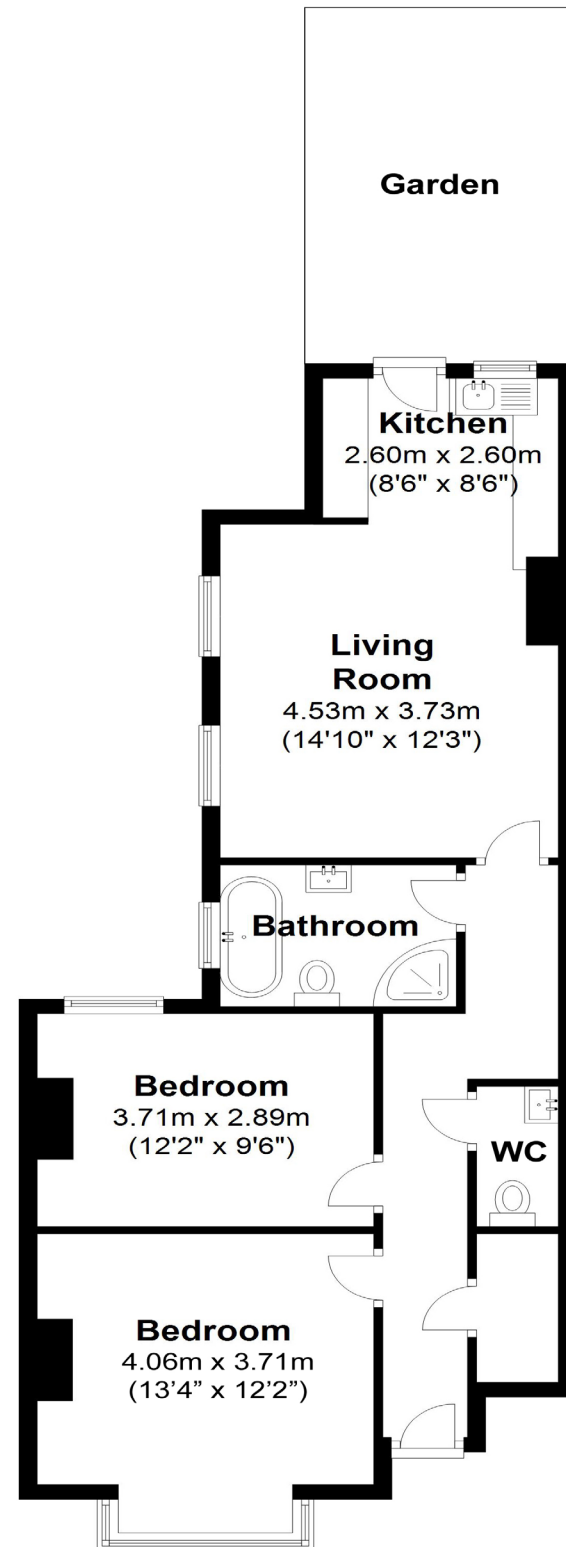


Ground Floor
Approx. 65.2 sq. metres (701.5 sq. feet)



Total area: approx. 65.2 sq. metres (701.5 sq. feet)
For illustration purposes only - not to scale



2 BEDROOM FLAT

Little Ealing Lane, W5
£499,950

This two double bedroom Edwardian flat has been transformed to create a stunning home with a sophisticated open plan living room and kitchen opening onto a private garden.

FEATURES

- Two Double Bedrooms
- Private Garden
- Ground Floor Flat
- Open Plan Living
- Close To Little Ealing Primary
- South Ealing Station Nearby
- Energy Rating: C



2 BEDROOM FLAT

Little Ealing Lane, W5

£499,950

This beautiful ground floor flat benefits from expansive living spaces, a stylish kitchen and a large family bathroom with separate WC.

This elegant brick fronted home is in a beautiful tree lined street and is reached through a large front garden leading to the smart front door. Gleaming wooden floors and high ceilings with period details welcomes you in to this large house. The dining room is to the left. Ornate coving lines the ceiling high above your head and there's a handsome period fireplace in the centre providing the focal point.

In a popular area close to Walpole and Lammas Parks, schools and shops, this substantial flat is between Northfields tube station and South Ealing.

