



43 Holme Drive, Burton-upon-Stather, Scunthorpe, Lincolnshire. DN15 9DA

- EXECUTIVE DETACHED FAMILY HOME
- BEAUTIFULLY PRESENTED THROUGHOUT
- SOUGHT AFTER VILLAGE LOCATION
- FOUR DOUBLE BEDROOMS WITH MASTER EN-SUITE
- LOUNGE, DINING ROOM, CONSERVATORY & STUDY
- GENEROUS PLOT TO FRONT & REAR
- DOUBLE GARAGE



PROPERTY DESCRIPTION

****BEAUTIFUL EXECUTIVE FAMILY HOME****MODERNISED THROUGHOUT & EXTENDED**** Located in the sought after village of Burton-Upon-Stather this stunning family home has been beautifully kept by the current owners and would make a perfect turn key family home ready for someone to move straight into. The home briefly comprises an entrance hall, spacious lounge, kitchen, utility room, dining room, conservatory, study and ground floor toilet. The first floor offers four double bedrooms serviced by an attractive tiled four piece bathroom suite. The grand master bedroom is a fantastic size with its own modern en-suite enjoying tiled walls and floor, his and hers wash hand basins and a double walk in shower enclosure. Externally the home has a lawned frontage with a block paved drive providing off road parking for multiple vehicles whilst giving access to the double garage. The vast rear garden is fully enclosed and mainly laid to lawn with a block paved patio entertaining area. Viewings are highly recommended to fully appreciate this impressive home!



ROOM DESCRIPTIONS



FLOORPLAN & EPC

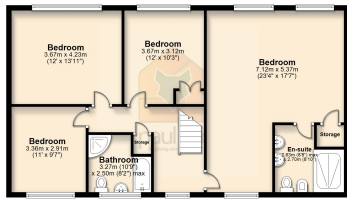


Ground Floor



Floor plans are intended to give a general indication of the layout only. All images and dimensions are not intended to form part of any contract or warranty. Floor dimensions only. Thanks.

First Floor

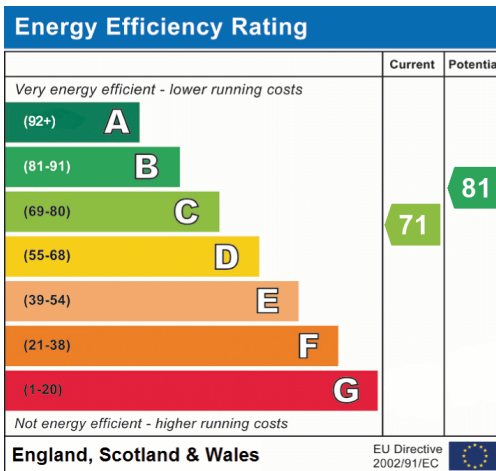
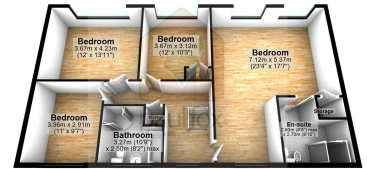


Ground Floor



Floor plans are intended to give a general indication of the layout only. All images and dimensions are not intended to form part of any contract or warranty. Floor dimensions only. Thanks.

First Floor



Scunthorpe
 29-31, Oswald Road, Scunthorpe, DN15 7PN
 01724 282868
 scunthorpe@paul-fox.com