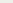
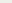
 3 Bedroom  2 Bathroom  2 Receptions

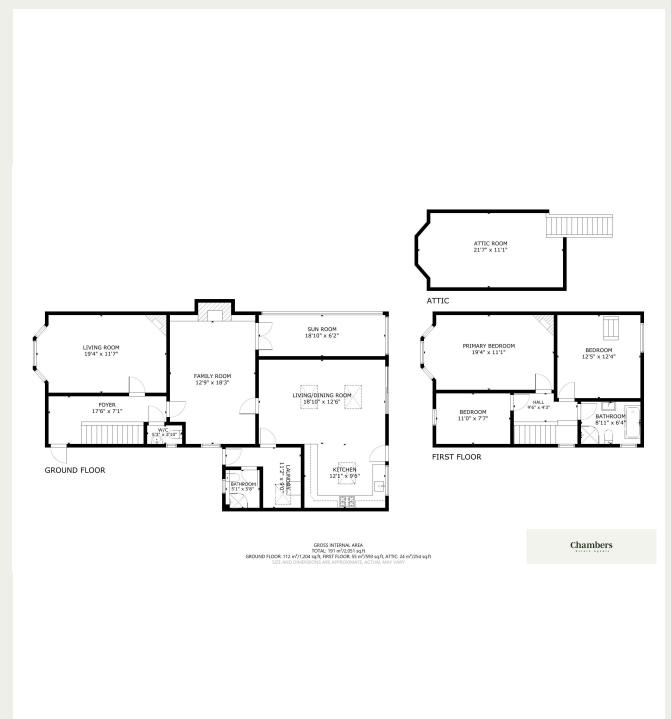


Property Descriptions

Located in the heart of Whitchurch, Foreland Road is an elegant bay-fronted semi-detached home, thoughtfully extended to blend period features with modern living.

The inviting entrance hall leads to a spacious living room, sitting room with sun-room, while the beautifully designed kitchen and family room form the heart of the home. A utility room and ground-floor shower room add convenience. Upstairs, three well-proportioned bedrooms and a stylish bathroom offer comfort, with a versatile loft room providing additional space.

The property benefits from gas central heating, UPVC double glazing, off-road parking, and an enclosed rear garden with a sunny aspect. Whitchurch is a sought-after suburb, just 3 miles north of Cardiff city centre. Excellent transport links include regular bus services, nearby railway stations on the Valley Lines network, and easy access to the A470 and M4.



✉ Info@chambersestateagents.co.uk

 www.chamberstateagents.co.uk

35 Merthyr Road, Cardiff, CF14 1DB

 0292 052 2106

Chambers

Estate Agents



Website

www.chambersestateagents.co.uk/



Email

info@chambersestateagents.co.uk



Phone

T: 0292 052 2106



Branch

35 Merthyr Road,
Cardiff CF14 1DB

Finding Homes Since 1992.