



10A Linden Road, , Bexhill-On-Sea, East
Sussex, TN40 1DN

£249,950

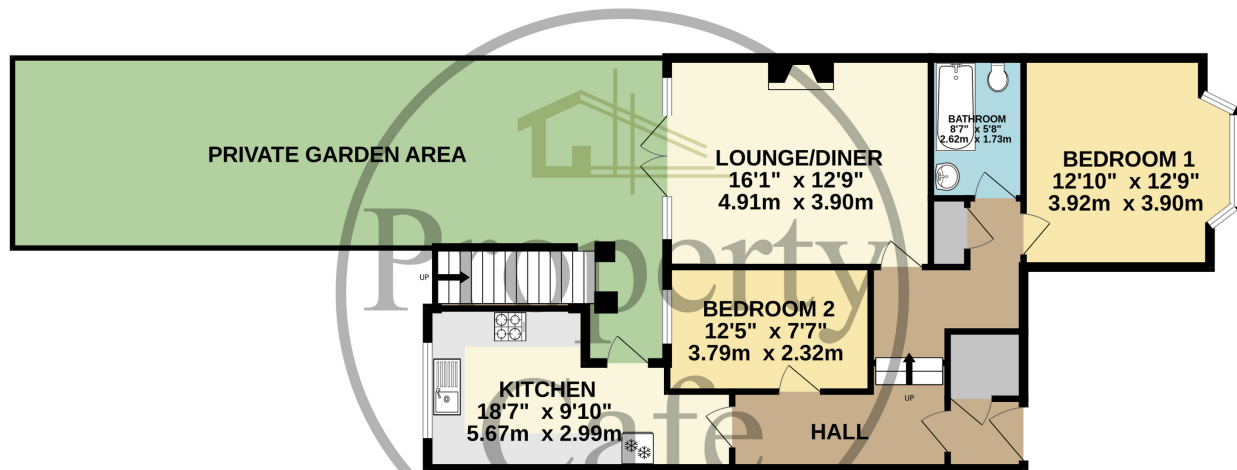


- Two Bed Ground Floor Apartment
- Own Entrance & Private Garden
- Modern Bathroom & Kitchen
- Gas Central Heating
- Long Lease & Low Outgoings
- Sought After Town Centre Location
- Inner Hall With Ample Storage
- West Facing Rear Garden
- Decked Patio & Central Lawn
- Sold With No Onward Chain
- Long Lease & Share Freehold





GROUND FLOOR
853 sq.ft. (79.2 sq.m.) approx.



TOTAL FLOOR AREA : 853 sq.ft. (79.2 sq.m.) approx.

Whilst every attempt has been made to ensure the accuracy of the floorplan contained here, measurements of doors, windows, rooms and any other items are approximate and no responsibility is taken for any error, omission or mis-statement. This plan is for illustrative purposes only and should be used as such by any prospective purchaser. The services, systems and appliances shown have not been tested and no guarantee as to their operability or efficiency can be given.
Made with Metropix ©2024

