



1 Bryans Crescent, North Crawley, Newport Pagnell, Buckinghamshire, MK16 9LR

£260,000 Freehold

- CHAIN FREE
- Well-proportioned rear garden, suitable for multiple uses
- Offers over £260,000
- Highly desirable North Crawley village location
- Integrated wardrobe to principal bedroom
- Potential planning permission for a double garage
- Easy access to Newport Pagnell and Milton Keynes
- Two spacious double bedrooms
- Ideal for downsizers, first-time buyers, or investors
- EPC Rating





Offers Over £260,000

Situated in the highly sought-after village of North Crawley, this well-presented two-bedroom bungalow offers spacious accommodation, excellent outdoor space, and exciting future potential.

North Crawley is a desirable and charming Buckinghamshire village, known for its strong sense of community, countryside surroundings, and convenient access to Newport Pagnell, Milton Keynes, and major transport links. The area is particularly popular with buyers seeking a quieter village lifestyle while remaining within easy reach of amenities, schools, and commuter routes.

The property comprises two generous double bedrooms, one benefiting from an integrated wardrobe, while the second offers ample built-in storage. The bathroom features a three-piece suite, including both a shower and bath. The heart of the home is the spacious lounge/diner, a bright and versatile area ideal for both everyday living and entertaining. The kitchen is well equipped with an integrated oven and hob and provides direct access via a rear door to the well-proportioned rear garden, offering an excellent outdoor space suitable for a variety of uses.

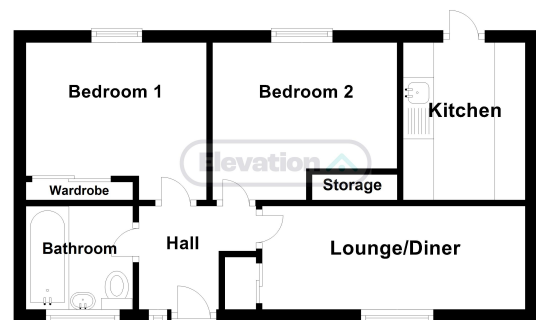
Externally, the property benefits from off-road parking for two to three vehicles and potential planning permission for a double garage, adding further appeal for buyers seeking additional parking or storage options.

This bungalow represents a fantastic opportunity to purchase a home in a highly desirable village location with strong investment and lifestyle appeal.

Disclaimer

Whilst we have endeavoured to prepare our sales particulars accurately none of the services, appliances or equipment have been tested. A buyer should satisfy themselves on such matters prior to purchase. Any measurements or distances mentioned in these particulars are for guide reference only. If such particulars are fundamental to a purchase, buyers should rely on their own enquiries. All enquiries should be directed to Elevation Estate Agents in the first instance.

Ground Floor



Floorplans are for layout purposes only. Measurements are approximate and subject to inaccuracies.
Plan produced using PlanUp.