



## Lawnstore Court, High Street, Hoddesdon, Hertfordshire EN11 8HD

**£240,000 Leasehold**

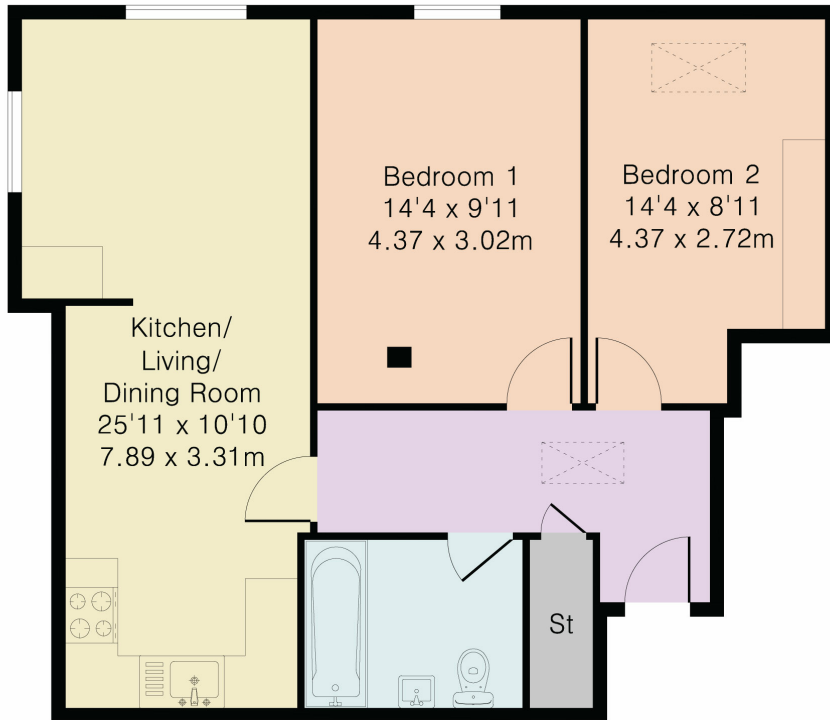
- Two Bedrooms
- Security Video Entry Phone
- Town Centre Location
- Modern Décor

This two bedroom apartment is enviously located in the heart of Hoddesdon Town Centre and has been tastefully updated by its current owner, boasting a stylish decor throughout. The property is both bright and spacious, with a well placed skylight in the hallway and tall ceilings in all rooms. Additional benefits include a secure video entry phone system and SMART electric heaters. Hoddesdon is a vibrant town with a generous selection of shops, bars and restaurants. There are also excellent commuter links with both Broxbourne and Rye House mainline stations within easy reach.



These particulars, whilst believed to be accurate are set out as a general outline only for guidance and do not constitute any part of an offer or contract. Intending purchasers should not rely on them as statements or representation of fact, but must satisfy themselves by inspection or otherwise as to their accuracy. We have not carried out a detailed survey nor tested the services, appliances and specific fittings. Room sizes should not be relied upon for carpets and furnishings. The measurements given are approximate. No person in this firm's employment has the authority to make or give any representation or warranty in respect of the property.

Approximate Gross Internal Area 680 sq ft – 63 sq m



Second Floor



Although Pink Plan Ltd ensures the highest level of accuracy, measurements of doors, windows and rooms are approximate and no responsibility is taken for error, omission or misstatement. These plans are for representation purposes only as defined by RICS code of measuring practise. No guarantee is given on total square footage of the property within this plan. The figure icon is for initial guidance only and should not be relied on as a basis of valuation.

