



9 Whittle Court,  
Knowlhill, Milton Keynes, MK5 8FT

Tel: 01908 231 551



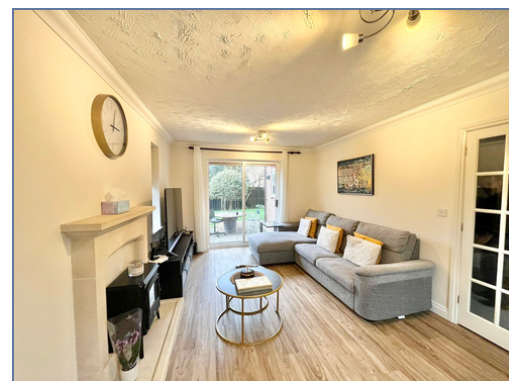
mail@elevationstateagents.com



**3 Hillbeck Grove, Middleton, Milton  
Keynes, Buckinghamshire, MK10 9JJ**

**£625,000 Freehold**

- THREE RECEPTION ROOMS
- DOUBLE GARAGE
- Gated Parking
- Four double bedrooms
- Local amenities within walking distance
- Outstanding school catchment
- EPC Rating C



See our full selection of properties online at [www.elevationstateagents.com](http://www.elevationstateagents.com)





\*\*\*DOUBLE GARAGE\*\*\* GATED DRIVEWAY\*\*\* THREE RECEPTION ROOMS\*\*\*

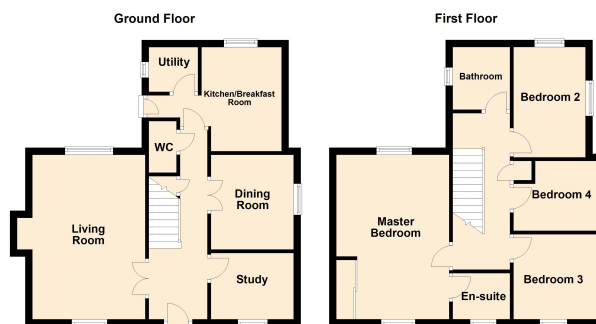
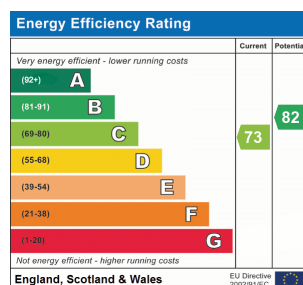
This four double bedroom family home is located in the desirable location of Middleton. The property is set over two floors, the ground floor comprises of spacious entrance hall, living room, study, dining room, cloakroom, kitchen/breakfast room and utility room. The first floor comprises of master bedroom with ensuite, a further three double bedrooms and family bathroom.

The property benefits from a double garage, driveway for three cars and well maintained rear garden.

Middleton is a much sought after location with excellent local schools as well as close proximity to various amenities such as Willen Lake and the Ouzel Valley Park. Middleton primary which currently has an outstanding Ofsted rating, along with Oakgrove secondary school are both within walking distance. There are excellent facilities at both Oakgrove and Kingston district shopping centre, as well as being a short drive away from Central Milton Keynes. The property is around 4 Miles from Milton Keynes central train station and offers easy access to both Junction 13/14 of the M1.

## Disclaimer

Whilst we have endeavoured to prepare our sales particulars accurately none of the services, appliances or equipment have been tested. A buyer should satisfy themselves on such matters prior to purchase. Any measurements or distances mentioned in these particulars are for guide reference only. If such particulars are fundamental to a purchase, buyers should rely on their own enquiries. All enquiries should be directed to Elevation Estate Agents in the first instance.



Floor plans are for layout purposes only. Measurements are approximate and subject to inaccuracies. Plans produced using Planitup.