



1a The Green, Hartford, Northwich, Cheshire, CW8 1QA

£370,000



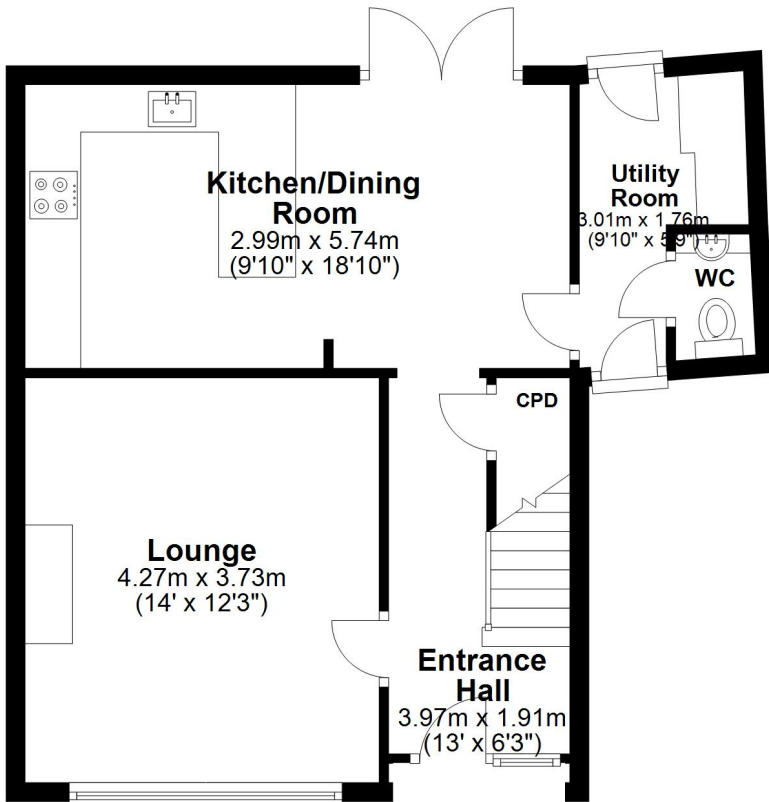
This is a much improved and immaculately presented semi-detached house, which is located in the heart of the village and overlooking St John's Parish Church to the front. The property is offered in excellent decorative order and features PVCu double glazing and gas central heating. The accommodation comprises: Entrance hall, lounge, luxury kitchen dining room, utility room and WC on the ground floor along with three good size bedrooms and a four piece bathroom on the first floor. Outside there are large front and rear gardens as well as a detached garage. We envisage strong interest and an early viewing appointment is advised.



These particulars, whilst believed to be accurate are set out as a general outline only for guidance and do not constitute any part of an offer or contract. Intending purchasers should not rely on them as statements of representation of fact, but must satisfy themselves by inspection or otherwise as to their accuracy. All measurements quoted are approximate. We are unable to confirm the working order of any fixtures and fittings including appliances that are included in these particulars. No person in this firm's employment has the authority to make or give any representation or warranty in respect of the property.

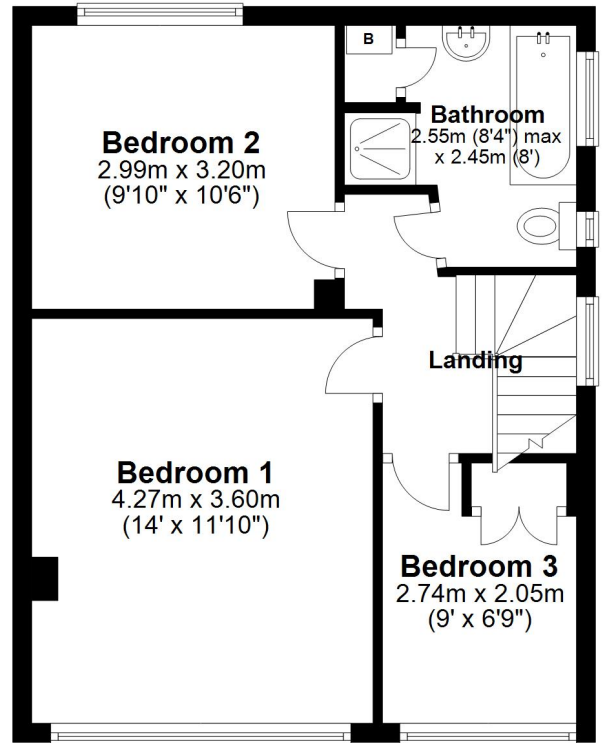
Ground Floor

Approx. 47.9 sq. metres (515.9 sq. feet)



First Floor

Approx. 42.3 sq. metres (454.9 sq. feet)



Total area: approx. 90.2 sq. metres (970.8 sq. feet)

This plan is included as a service to our customers and is intended as a GUIDE TO LAYOUT only. Dimensions are approximate. DO NOT SCALE.



33, The Green, Hartford, Northwich, CW8 1QA

01606 331784

Email: enquiries@westates.co.uk

www.westates.co.uk

