

This four double bedroom detached chalet bungalow is set back on one of Langley's premier and most sought-after roads, and offers spacious and versatile accommodation of almost 1900 square ft.

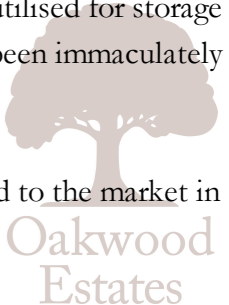
The ground floor features three reception rooms including an impressively spacious 20ft living room and separate dining areas. A recently erected rear extension creates an additional dining room overlooking the delightful rear garden, whilst the conservatory enjoys all day sunlight.








The kitchen features a good range of modern cupboards complemented by white granite worktops. Two ground floor bedrooms benefit access to fitted wardrobes and a downstairs shower room.

The first floor comprises two further double bedrooms, the master stretching 15ft, whilst both rooms benefit ample eaves storage. An additional family bathroom is also located on the first floor.

Externally the driveway provides parking for 3-4 cars and a garage to the side is currently being utilised for storage but provides scope for further extension (STPP). The rear garden is mostly laid to lawn and has been immaculately kept.

The property is perfectly situated a short walk from all three local grammar schools and is offered to the market in an excellent decorative order throughout.

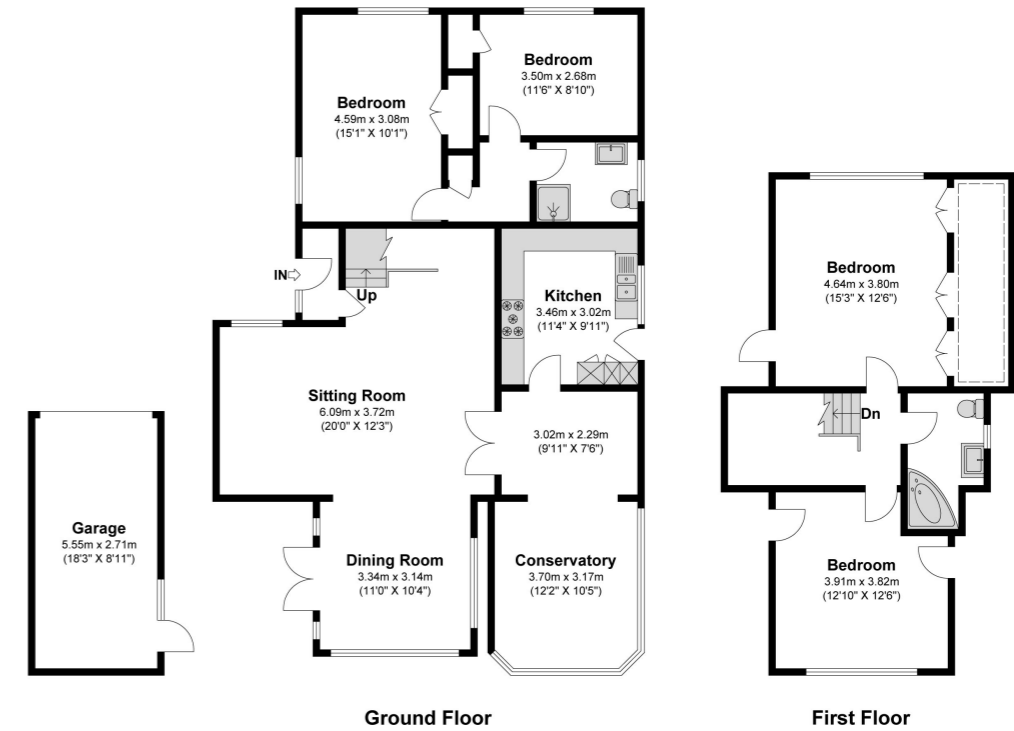


-  **FOUR BEDROOM DETACHED CHALET BUNGALOW**
-  **EXCELLENT DECORATIVE ORDER THROUGHOUT**
-  **THREE RECEPTION ROOMS INCLUDING RECENT REAR EXTENSION**
-  **MODERN KITCHEN WITH GRANITE SURFACES**
-  **DOWNSTAIRS SHOWER ROOM**
-  **DRIVEWAY FOR 3-4 CARS AND GARAGE TO THE SIDE**
-  **IMMACULATE REAR GARDEN**
-  **WALKING DISTANCE TO THREE LOCAL GRAMMAR SCHOOLS**
-  **HIGHLY SOUGHT-AFTER RESIDENTIAL LOCATION**

					
x4	x2	x2	x4	Y	Y
Bedrooms	Reception Rooms	Bathrooms	Parking Spaces	Garden	Garage

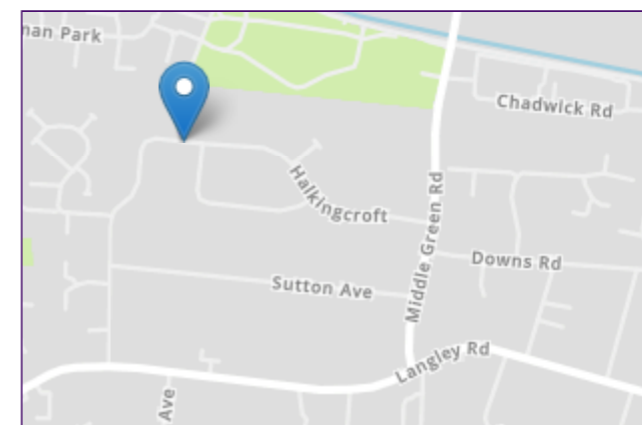


Halkincroft
 Approximate Floor Area
 1729.43 Square feet 160.67 Square metres (Excluding Garage)
 Garage Area 161.89 Square feet 15.04 Square metres
 Total Area 1891.32 Square feet 175.71 Square metres (Including Garage)



Illustrations are for identification purposes only, measurements are approximate, not to scale

Prospective purchasers should be aware that these sales particulars are intended as a general guide only and room sizes should not be relied upon for carpets or furnishing. We have not carried out any form of survey nor have we tested any appliance or services, mechanical or electrical. All maps are supplied by Goview.co.uk from Ordnance Survey mapping. Care has been taken in the preparation of these sales particulars, which are thought to be materially correct, although their accuracy is not guaranteed and they do not form part of any contract.



Transport Links

NEAREST STATIONS:

Langley - 1.1 miles

Datchet - 1.2 miles

Slough - 1.8 miles

Local Schools

PRIMARY SCHOOLS

St Bernard's Preparatory School

0.3 miles away (Independent school)

Ryvers School

0.5 miles away

The Langley Academy Primary

0.7 miles away

St Mary's Church of England Primary School

0.7 miles away

SECONDARY SCHOOLS

St Bernard's Catholic Grammar School

0.3 miles away

Upton Court Grammar School

0.5 miles away

The Langley Academy

0.7 miles away

Ditton Park Academy

0.8 miles away

Long Close School

0.9 miles away (Independent school)

Council Tax

Band F