



St Petersburg Place, London, W2 4JY

Cow & Co
LONDON



GUIDE PRICE OF £1,250,000-1,500,000. A fantastic three-bedroom apartment on the fifth floor of an attractive portered building. Boasting generous living space with contemporary semi open plan kitchen, private balcony, two bathrooms and two double bedrooms.

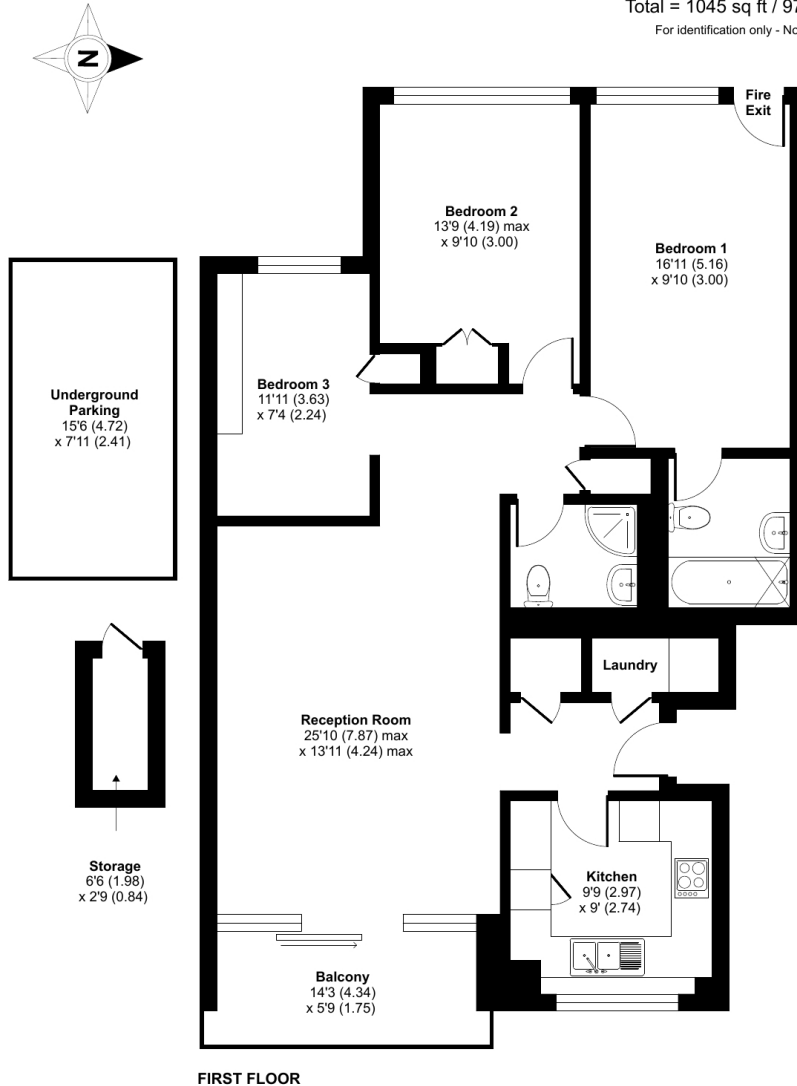
St Petersburg Place is ideally situated for Notting Hill, Westbourne Grove and Queensway with their wonderful array of fashionable shops, bars and restaurants. Excellent transport links are also on the doorstep with an abundance of bus routes and direct links to the City, Paddington Station /Heathrow Express, as well as the calming green open spaces of Kensington Gardens and Hyde Park.



- Attractive portered building
- Three-bedroom apartment
- Two bathrooms
- Semi open plan modern kitchen
- Private balcony
- Lift access
- Excellent amenities and transport links nearby
- Allocated off street, underground secure parking space

St Olaves Court, St Petersburg Place , London, W2

Approximate Area = 1027 sq ft / 95 sq m
Outbuilding = 18 sq ft / 2 sq m
Total = 1045 sq ft / 97 sq m
For identification only - Not to scale



FIRST FLOOR



Floor plan produced in accordance with RICS Property Measurement Standards incorporating International Property Measurement Standards (IPMS2 Residential). © nchecon 2021. Produced for Cow & Co Properties Ltd. REF: 894933

Tel: 0208 065 0010
Email: thehub@cowandco-london.com
Web: cowandco-london.com

Agents note: All measurements are approximate and whilst every attempt has been made to ensure accuracy they are for general guidance only and must not be relied on. The fixture and fittings referred to have not been tested and therefore no guarantee can be given that they are in working order. Internal photographs are reproduced for general information and it must not be inferred that any item shown is included with the property.

Cow & Co
LONDON