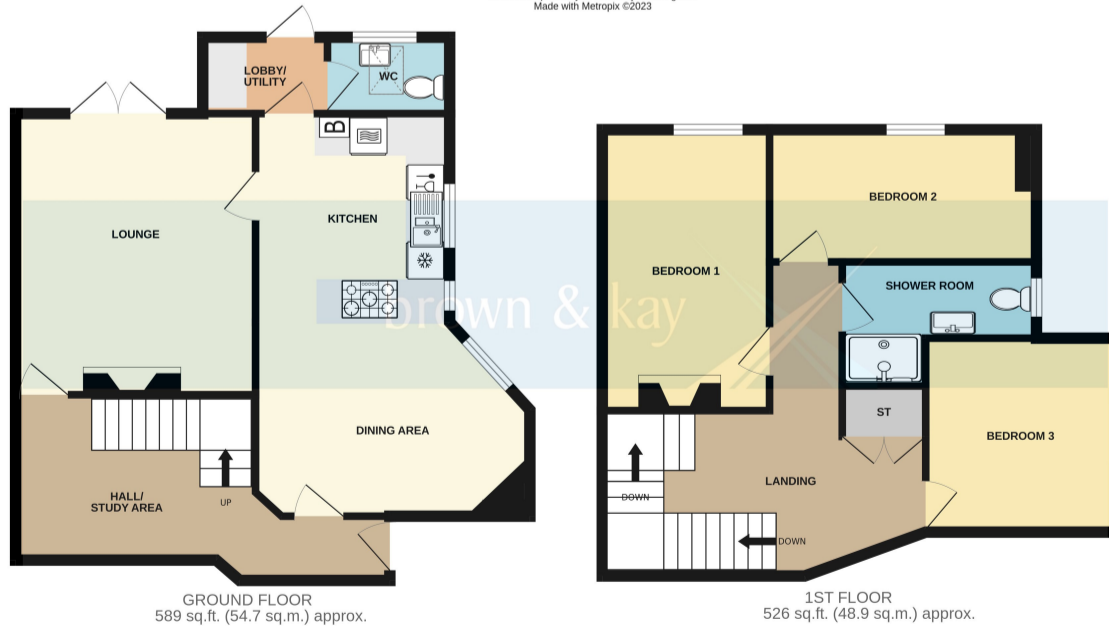




Energy Efficiency Rating		Current	Potential
Very energy efficient - lower running costs			
(92-100)	A		
(81-91)	B		
(69-80)	C		79
(55-68)	D	62	
(39-54)	E		
(21-38)	F		
(1-20)	G		
Not energy efficient - higher running costs			
England, Scotland & Wales		EU Directive 2002/91/EC	

TOTAL FLOOR AREA: 1115 sq.ft. (103.6 sq.m.) approx.
 Whilst every attempt has been made to ensure the accuracy of the floorplan contained here, measurements of doors, windows, rooms and any other items are approximate and no responsibility is taken for any error, omission or mis-statement. This plan is for illustrative purposes only and should be used as such by any prospective purchaser. The services, systems and appliances shown have not been tested and no guarantee as to their operability or efficiency can be given.
 Made with Metropix ©2023



rightmove
find your happy

DISCLAIMER PROPERTY DETAILS: These particulars, whilst believed to be accurate are set out as a general outline only for guidance and do not constitute any part of an offer or contract. Intending purchasers should not rely on them as statements or representation of fact, but must satisfy themselves by inspection or otherwise as to their accuracy. We have not carried out a detailed survey nor tested the services, appliances and specific fittings. Room sizes should not be relied upon for carpets and furnishings. The measurements given are approximate. No person in this firm's employment has the authority to make or give any representation or warranty in respect of the property.

20, Seamoor Road, Bournemouth, Dorset, BH4 9AR Also at: 30 Hill Street, Poole BH15 1NR Tel: 01202 676292



Email: sales@brownandkay.co.uk Web: www.brownandkay.co.uk Tel: 01202 765995



Flat 1, 103 Alumhurst Road, ALUM CHINE, Dorset BH4 8HS

Guide Price £575,000

The Property

Occupying a fantastic position moments from the beach is this beautifully appointed ground and first floor maisonette, being one of just two homes in this character property. The home affords an impeccable and stylish interior with a seamless blend of contemporary elements and character features such as stripped wood flooring, fireplaces and period style radiators all of which enhance the ambiance of home. Additionally, there is a generous reception hall with feature staircase and ample space to create a 'work from home' set up, a stunning and beautifully appointed kitchen/dining room, three bedrooms, two of which enjoy views towards Bournemouth Bay, a stylish shower room, and a particular feature of the property is the private garden to the rear, directly accessed from the impressive lounge.

Alum Chine is a highly desirable location with miles upon miles of impressive golden sandy beaches a leisurely stroll away, perfect for a relaxed paddle boarding session and refreshing dip, or take a walk either way along the promenade to Bournemouth and beyond in one direction, and the famous Sandbanks in the other - a hotspot for water sport enthusiasts. The stylish village of Westbourne with its cosmopolitan vibe and true sense of community at its heart is also within walking distance, and there you can enjoy the numerous cafe bars, delis and restaurants or browse the Victorian arcade. Explore a little further and you will find plenty of spectacular gardens and great golf to be enjoyed at the Parkstone Golf Course.

AGENTS NOTE - PETS

Our clients have advised pets (on licence) are permitted subject to approval from the joint freeholder.

ENTRANCE

Entrance which serves both properties, door to Entrance Foyer for the apartment.

LARGE RECEPTION HALL

12' 4" x 8' 5" (3.76m x 2.57m) Featuring a return staircase to the first floor landing, stripped wood flooring and period style radiator, ample space to create a 'work from home' set up.

LOUNGE

14' 10" x 12' 5" (4.52m x 3.78m) An impressive room featuring high ceilings with double opening doors to the private garden, stripped wood flooring, period style radiator, ornate fireplace with mantel and surround.

KITCHEN/DINING ROOM

10' 8" x 10' 0" (3.25m x 3.05m) A beautifully appointed and contemporary styled kitchen equipped with a full range of units with complimentary Quartz work surface and stylish 'Metro' tiling, inset drainer and one and a half bowl sink unit, integrated double oven, work surfaces incorporating 5 ring Neff gas hob with drawer units below, integrated fridge and integrated AEG dishwasher, pantry style unit housing Worcester boiler, stripped wood flooring, double glazed windows to the side, door to utility room, step up to dining area.

DINING AREA

14' 7" x 10' 1" (4.45m x 3.07m) Double glazed window, period style radiator, stripped wood flooring.

UTILITY

6' 2" x 4' 6" (1.88m x 1.37m) Work surface with space and plumbing for washing machine and tumble dryer, wall cupboard, door to the rear garden.

CLOAKROOM

Double glazed velux style window, wash hand basin inset in to vanity unit, low level w.c., radiator, tiled floor and attractive panelling to walls.

FIRST FLOOR LANDING

With doors through to the following rooms:-

BEDROOM ONE

14' 0" x 8' 6" (4.27m x 2.59m) Double glazed window to the rear aspect with pleasant outlook and views towards Bournemouth Bay and beach, period style radiator, Victorian style fireplace.

BEDROOM TWO

9' 10" x 9' 4" (3.00m x 2.84m) Double glazed window to the side aspect, period style radiator.

BEDROOM THREE

13' 11" x 6' 10" (4.24m x 2.08m) Double glazed window to the rear aspect with views on towards Bournemouth Bay and beach.

SHOWER ROOM

Stylish shower room over size shower cubicle with flush mounted controls, hand held shower, ceiling mounted 'Rainfall' shower and feature tiling, low level w.c. and wash hand basin inset in to vanity unit. Radiator, double glazed window, attractive panelling to walls.

ALLOCATED PARKING

To the front are allocated parking spaces for two vehicles, pathway leads alongside the property through to the garden.

PRIVATE REAR GARDEN

A particular feature of the home is the private rear garden which is fully enclosed with a pleasant backdrop, arranged with ease of maintenance in mind, paved patio and decorative stone border.

TENURE - SHARE OF FREEHOLD

Length of Lease - 999 years from 2019
Maintenance - On an 'as and when' basis

COUNCIL TAX - BAND C