



KUBIE GOLD
ASSOCIATES

WATERDALE MANOR HOUSE 20 HAREWOOD AVENUE NW1



- PORTERED BLOCK
- GROUND FLOOR
- TWO BEDROOMS

- TWO BATHROOM
- WELL PRESENTED
- AVAILABLE 20TH JULY

£795 per week

SALES, LETTINGS & PROPERTY MANAGEMENT

Tel:

020 7563 7272

36 Ivor, Regents Park, London, NW1 6EA

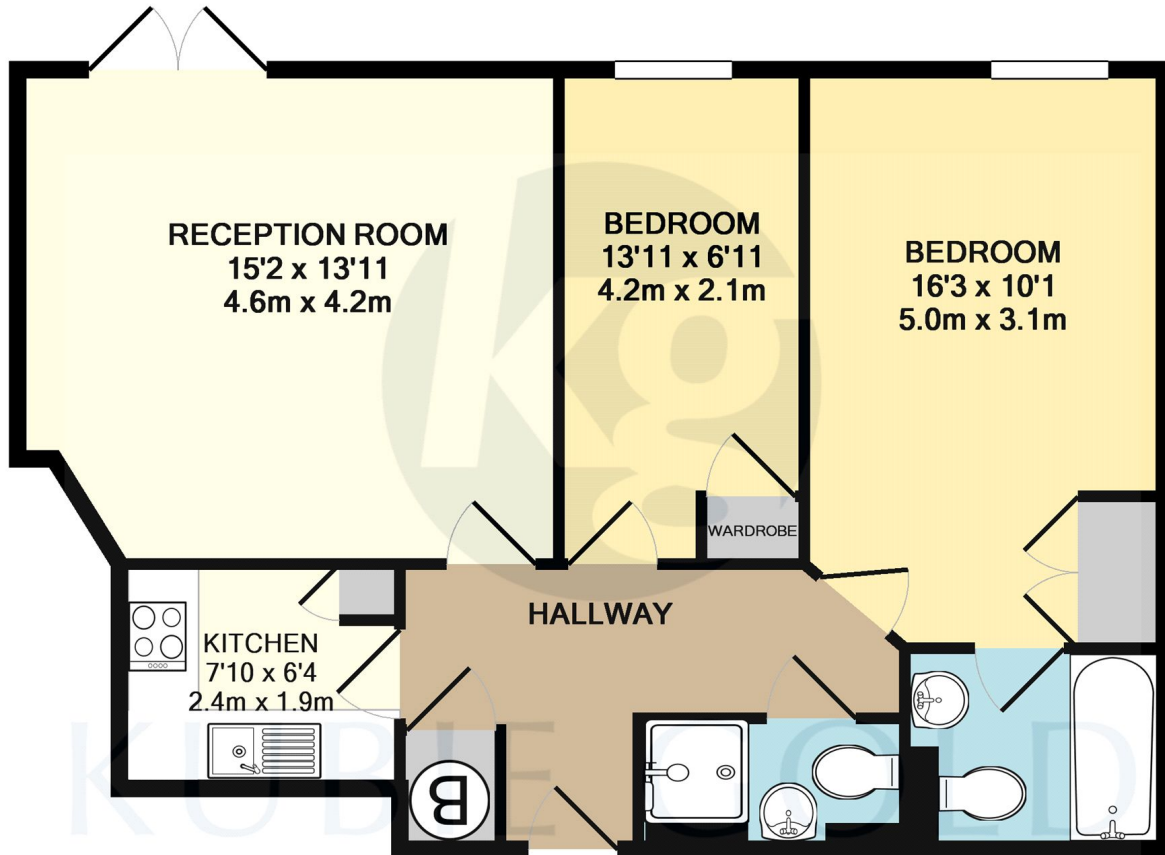
Email: info@kubie-gold.co.uk Website: www.kubie-gold.co.uk

Kubie Gold Associates is the trading name of Kubie Gold Associates Ltd
Company Registration No. 7271501 registered in England and Wales



Waterdale Manor House, NW1

Recently refurbishment and updating in this extremely well presented two bedroom, large reception with wood floors, two bathroom apartment located on the ground floor of this popular portered block close to Marylebone Station. Further benefits include private patio area and separate fitted kitchen. Available 20th July.



TOTAL APPROX. FLOOR AREA 656 SQ.FT. (60.9 SQ.M.)

Whilst every attempt has been made to ensure the accuracy of the floor plan contained here, measurements of doors, windows, rooms and any other items are approximate and no responsibility is taken for any error, omission, or mis-statement. This plan is for illustrative purposes only and should be used as such by any prospective purchaser. The services, systems and appliances shown have not been tested and no guarantee as to their operability or efficiency can be given

Made with Metropix ©2013

Local Authority:

Westminster

Tax Band:

Band G

Energy Efficiency Rating		Current	Potential
Very energy efficient - lower running costs			
(92+)	A		
(81-91)	B		
(69-80)	C	76	76
(55-68)	D		
(39-54)	E		
(21-38)	F		
(1-20)	G		
Not energy efficient - higher running costs			
England, Scotland & Wales		EU Directive 2002/91/EC	

