



Asking Price £400,000 Freehold



123 Brewery Road, Plumstead, London
SE18 1NE



PROPERTY DESCRIPTION

RE/MAX SELECT are delighted to offer for sale this well presented terraced house, close to schools, amenities, and transport links, including Plumstead Common, and Plumstead Station. This property comprises 3 DOUBLE bedrooms, open-plan kitchen/breakfast room, living room, and family bathroom.

Further benefits include double glazing, gas central heating, and 30ft (approx) garden. Total Internal Area approx: 862.29 sq ft (80.11 sq m).

FEATURES

- 3 double bedrooms
- Large living room
- Open-plan kitchen / breakfast room
- Downstairs family bathroom
- 30ft (approx) rear garden
- Close to Plumstead Station with Thameslink





ROOM DESCRIPTIONS

Ground Floor

Entrance Hall

Laminate flooring, ceiling coving, radiator.

Living Room

Laminate flooring, ceiling coving, radiator, double glazed bay window, fireplace.

Kitchen / Breakfast Room

Laminate flooring, ceiling coving, radiator, double glazed windows; range of wood wall and base units with granite-effect worktops; composite sink and drainer unit with mixer tap; integrated oven, gas hob, extractor hood; space and connections for fridge/freezer.

Family Bathroom

Tiled flooring, part-tiled walls, double glazed windows, bath; walk-in shower enclosure with glass screen and rainfall fitting; vanity wash-hand basin with mixer tap; w/c.



First Floor

Landing

Wood flooring.

Bedroom

Wood flooring, radiator, ceiling coving, double glazed windows, storage cupboard.

Bedroom

Wood flooring, radiator, ceiling coving, double glazed windows.

Bedroom

Carpeted, radiator, ceiling coving, double glazed windows.

External

Rear Garden

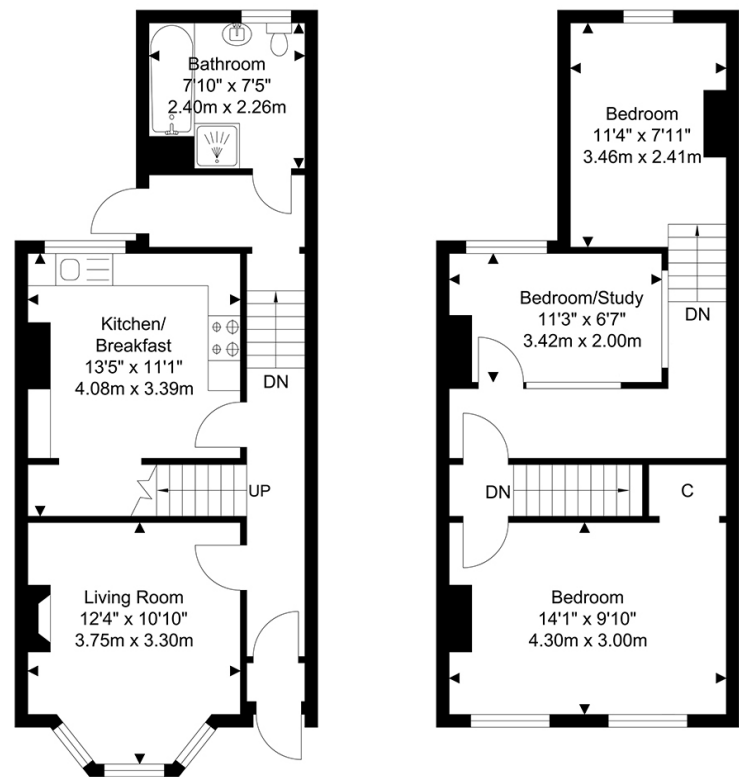
Approximately 30ft; gravel.

Information

- 0.3 miles (approx) to Plumstead Station with Thameslink
- 0.3 miles (approx) to Plumstead Common
- Easy access to A2 / M25
- Council Tax: Band C



FLOORPLAN



Ground Floor
Approximate Floor Area
437.55 SQ.FT.
(40.65 SQ.M.)

First Floor
Approximate Floor Area
424.74 SQ.FT.
(39.46 SQ.M.)

TOTAL APPROX FLOOR AREA 862.29 SQ. FT / 80.11 SQ. M
For Identification Purposes Only.

