

Longridge Way, Weston Village, Weston-Super-Mare, Somerset.  
BS24 7EX

£170,000 Leasehold

FOR SALE



[www.housefox.co.uk](http://www.housefox.co.uk)



01934 314242  
01275 404601  
01278 557700  
[sales@housefox.co.uk](mailto:sales@housefox.co.uk)

## PROPERTY DESCRIPTION

WELL PRESENTED TOP FLOOR FLAT WITH NO ONWARD CHAIN.....Set on the top floor of this purpose built block the well presented accommodation comprises hallway, nice size lounge with dual aspect, 2 bedrooms, kitchen, bathroom plus gas central heating, newly fitted double glazing, new carpets, allocated parking and security entry phone system.

So if you're looking for a light and bright flat, need to move quickly, then give House Fox estate agents a call to book in your viewing

## FEATURES

- Purpose built top floor flat
- 2 bedrooms
- No onward chain
- Nice size lounge
- Allocated parking
- Gas central heating
- New double glazing
- New carpets
- Council tax--B
- EPC--C



## ROOM DESCRIPTIONS

### **Communal front door to communal hallway:**

Entry phone system

### **Communal hallway:**

Stairs to the top floor, door to the flat

### **Hallway:**

Cupboard, radiator.

### **Lounge:**

16' 0" x 13' 9" (4.88m x 4.19m) 3 double glazed windows giving dual aspect, two radiators, opening to the kitchen.

### **Kitchen:**

Sink unit, floor and wall units, wall mounted boiler, plumbing for washing machine, double glazed window, built in oven and hob

### **Bedroom 1:**

12' 4" x 11' 8" (3.76m x 3.56m) Two double glazed windows, radiator.

### **Bedroom 2:**

8' 6" x 8' 2" (2.59m x 2.49m) Double glazed window, radiator.

### **Bathroom:**

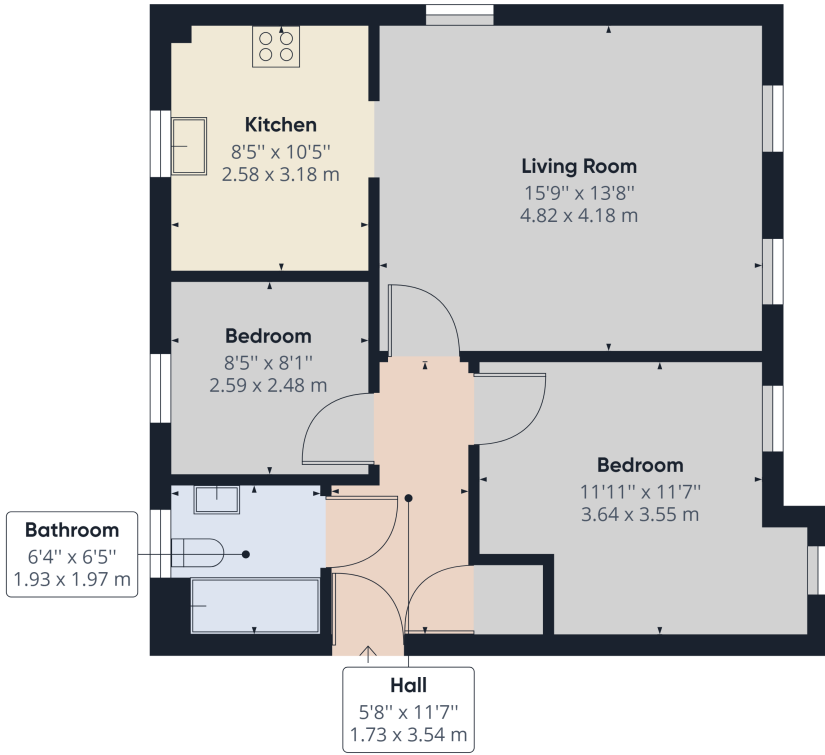
Bath, low level WC, wash hand basin, double glazed window, radiator

### **Parking:**

One allocated space



# FLOORPLAN & EPC



Approximate total area<sup>(1)</sup>  
629.19 ft<sup>2</sup>  
58.45 m<sup>2</sup>

(1) Excluding balconies and terraces

While every attempt has been made to ensure accuracy, all measurements are approximate, not to scale. This floor plan is for illustrative purposes only.

GIRAFFE360

