



brown & kay

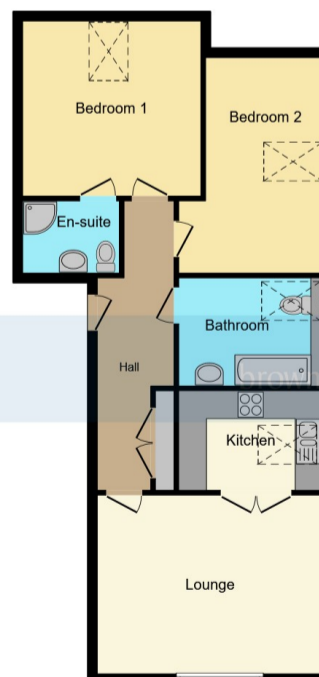
residential sales

lettings

mortgages

land & new homes

auctions



Floor Plan



This floor plan is for illustrative purposes only. It is not drawn to scale. Any measurements, floor areas (including any total floor area), openings and orientations are approximate. No details are guaranteed, they cannot be relied upon for any purpose and do not form any part of any agreement. No liability is taken for any error, omission or misstatement. A party must rely upon its own inspection(s). Powered by www.Propertybox.io

rightmove
find your happy

DISCLAIMER PROPERTY DETAILS: These particulars, whilst believed to be accurate are set out as a general outline only for guidance and do not constitute any part of an offer or contract. Intending purchasers should not rely on them as statements or representation of fact, but must satisfy themselves by inspection or otherwise as to their accuracy. We have not carried out a detailed survey nor tested the services, appliances and specific fittings. Room sizes should not be relied upon for carpets and furnishings. The measurements given are approximate. No person in this firm's employment has the authority to make or give any representation or warranty in respect of the property.

20, Seamoor Road, Bournemouth, Dorset, BH4 9AR Also at: 30 Hill Street, Poole BH15 1NR Tel: 01202 676292



Email: sales@brownandkay.co.uk Web: www.brownandkay.co.uk Tel: 01202 765995



Flat 12, Mountclere 91a Alumhurst Road, ALUM CHINE BH4 8HR

£275,000

The Property

Occupying a super position moments from the beach, this two bedroom apartment sits on the top floor of this attractive low rise development. This well presented home boasts generous and well planned accommodation and in brief comprises a lounge with opening to a well fitted kitchen, bedroom one with an en-suite shower room, bedroom two and principal bathroom. Additionally, there is an allocated parking space and with no onward chain, this would make a great property choice for a main home, buy to let investment, or lock up and leave holiday home.

Mountclere is well located within strolling distance of golden sandy beaches, perfect for a refreshing dip or paddle-boarding session, with miles upon miles of scenic promenade stretching to the famous Sandbanks and in the opposite direction, Bournemouth town centre and beyond. The bustling village of Westbourne with its cafe bar scene, diverse eateries and boutique shops, as well as the usual high street names such as Marks and Spencer food hall, is also within comfortable reach. The area is also well catered with bus services operating to surrounding areas and train stations at both Branksome and Bournemouth.

AGENTS NOTE - PETS AND HOLIDAY LETS

Neither pets nor holiday lets are permitted within the terms of the lease.

COMMUNAL ENTRANCE

Secure entry system, stairs to the top floor.

ENTRANCE HALL

Storage cupboard housing the gas combination boiler.

LOUNGE

15' 8" x 11' 9" (4.78m x 3.58m) UPVC double glazed window to the front aspect, radiator, opening to the kitchen.

KITCHEN

9' 2" x 6' 6" (2.79m x 1.98m) Well fitted kitchen equipped with a range of wall and base units with roll edge work surfaces over, built-in four point induction hob with built-in electric oven, integrated fridge/freezer, dishwasher and washer dryer. Side aspect velux window.

BEDROOM ONE

11' 9" x 10' 10" (3.58m x 3.30m) Rear aspect velux window, built-in wardrobes and drawer units, door through to the en-suite shower room.

EN-SUITE SHOWER ROOM

Suite comprising shower cubicle, wash hand basin and w.c., heated towel rail.

BEDROOM TWO

11' 9" x 10' 2" (3.58m x 3.10m) Side aspect velux window, radiator.

PRINCIPAL BATHROOM

Suite comprising panelled bath with shower attachment, wash hand basin and w.c. Side aspect velux window.

PARKING

The apartment benefits from having an allocated parking space.

TENURE - SHARE OF FREEHOLD

Length of Lease - 125 years, 109 years remaining
Service Charge - £1,000.00 per annum
Management Agent - Mountclere Management Company Ltd.

COUNCIL TAX - BAND C