



17 Damaway Drive, Glenrothes, Fife, KY7 6GL

Beautifully Presented, Three Bedroom, Modern End-Terrace Home

Up to date price and viewing info at [mov8realestate.com/property](https://www.mov8realestate.com/property)



Property Description

Beautifully presented, three-bedroom, modern end-terrace home with gardens and two allocated parking spaces. Located in an established residential development in Glenrothes, Fife.

Comprises an entrance hall, living room, dining/kitchen, three flexible bedrooms, a family bathroom and a ground-floor WC.

Ready-to-move-in - highlights include a stylish integrated kitchen, modern bathroom suites, contemporary flooring and lighting. In addition, there is gas central heating with stylish slimline radiators, double glazing, and good storage provision including a loft.

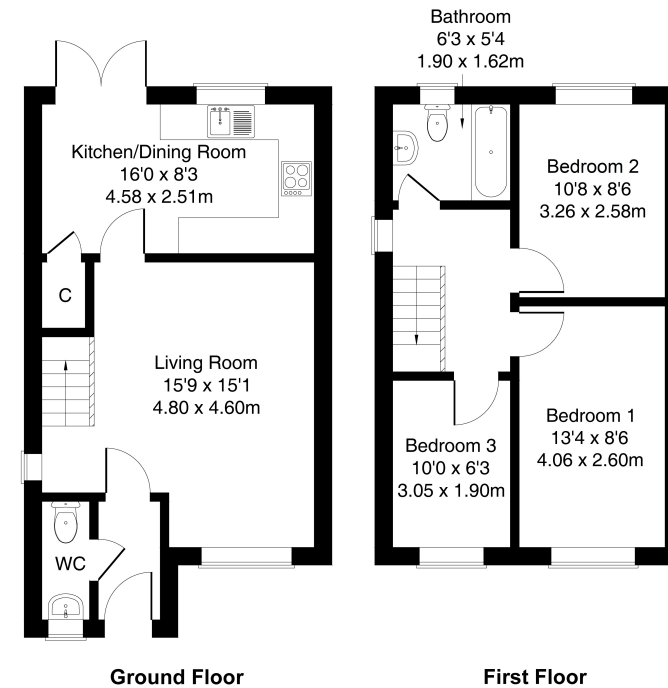
Externally, there is a synthetic lawn to the front; whilst an enclosed rear garden features a patio, a storage shed and a synthetic turf lawn. This modern residential development provides maintained communal grounds, and residential parking to the rear of the property including two allocated spaces.

The entrance vestibule gives access to a modern WC, and opens into the generously sized living room which features wood effect flooring, spotlighting and a tasteful fireplace. Set off the living room, with patio doors to the garden and ample space for dining, a stylish kitchen is fitted with modern units, stone effect worktops and matching splash backs, and a stainless steel sink. Appliances include an integrated double oven, an electric hob with a canopy above, a washing machine, a dishwasher; and a freestanding fridge/freezer.

On the upper floor, bedrooms one and two are similarly well-sized and finished, with carpeted flooring and ample space for freestanding furniture; whilst a further flexible bedroom is set to the front. Completing the accommodation, the bathroom is fitted with a modern three-piece suite, a mains mixer shower over the bath and a ladder-style radiator.

mov⁸ REAL ESTATE 17 Darnaway Drive, Glenrothes, KY7 6GL
Estate Agents and Solicitors

Approximate Gross Internal Area: (764 sq ft - 71 sq m.)



Legal Disclaimer : Floor-plan and measurements are for illustrative guidance only, and not intended to form part of any contract.

Area Description

South Queensferry is a picturesque town which sits on the Forth shore between the three iconic bridges. Numerous shops line the cobbled main street, where there is a large choice of pubs, bistros and restaurants, whilst there is a large Tesco and several more restaurants to the south of the town. South Queensferry and Port Edgar Marina offer many watersports, and there are coastal walks and trails through the Dalmeny

Estate. West Lothian has country parks at Beecraigs and Muiravonside, plus a network of cycle and bridle paths. A popular commuting town for Edinburgh and Fife, it lies close to major road links, with regular commuting train services available from Dalmeny station and frequent local bus services throughout.





Our Services

- Free pre-sale property valuations
- Great value fixed estate agency fees
- Extensive buyer matching database
- Purchase and sale conveyancing

Contact Us

0345 646 0208

sales@mov8realestate.com

www.mov8.com

Head Office

6 Redheughs Rigg, Edinburgh, EH12 9DQ

Glasgow Office

77 Renfrew Street, Glasgow, G2 3BZ



Estate Agents and Solicitors

