

3, Bushey Green

Welwyn Garden City,
Hertfordshire, AL7 3HA
£400,000



COUNTRY PROPERTIES

PART OF HUNTERS

A GREAT PLACE TO START!! This extremely spacious 2 double bedroom house with large living room, modern kitchen and off street parking for one car is the ideal first home or for that downsize move.

- Terrace House
- 2 Double Bedrooms
- Large Living Room
- Modern Kitchen
- Large Garden
- Off street parking for 1 car

Ground Floor

Entrance Hall

Door to living room and entry to side access. Wood effect laminate flooring. Stairs leading to first floor.

Storage Area

You can use the side entrance from the front to gain access to this part of the house. Currently being used for storage. Laminate flooring. Radiator

Living Room

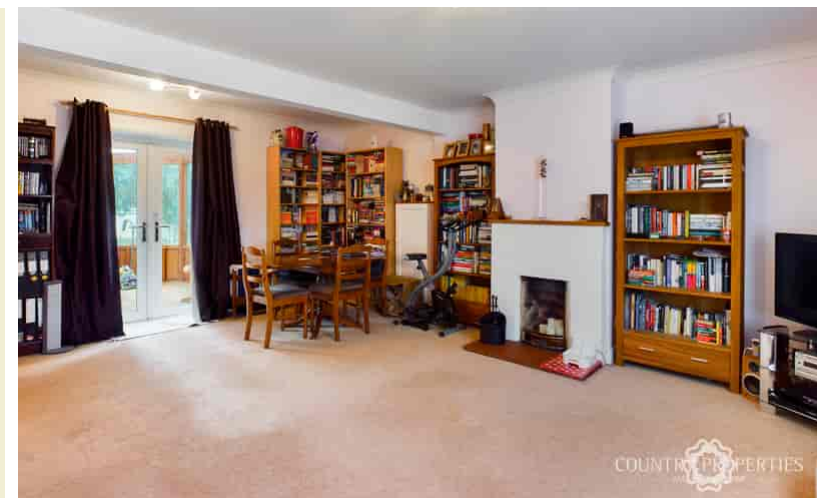
As you enter you are greeted by a fabulous sized room which must be seen to be believed! Radiator. Double glazed UPVC window to front. Television aerial ports and phone line. Open fireplace. Doors leading to conservatory and kitchen.

Kitchen

Modern kitchen with grey floor tiles. Grey floor and wall mounted cupboards. Spotlights over sink. Large sink basin with chrome mixer taps. Roll edged work top. White tiles on wall. Space for under counter fridge, freezer and washing machine Space for cooker. Extractor hood over. Double glazed UPVC windows to rear.

Conservatory

Wood built. Laminate flooring. Extractor. Doors leading to garden. Polycarbonate roof.



First Floor

Landing

Carpeted, doors leading to master bedroom, second bedroom, bathroom and toilet. Two storage cupboards one containing a wall mounted Baxi boiler and other being used as an airing cupboard that contains the tank. Loft access.

Master Bedroom

This bedroom has plenty of space for storage. Carpeted, double glazed UPVC windows to front. Radiator

Bedroom 2

Another spacious double bedroom. Carpeted. Radiator. Double glazed UPVC windows overlooking the garden

W/C

Low level W/C with dual flush. Frosted double glazed UPVC window to rear. Radiator. Tiled flooring

Bathroom

Two piece suite white bathroom suite with bath, chrome taps and shower over. Sink basin with chrome mixer tap. Frosted double glazed UPVC window to rear. Extractor fan. Tiled all around

Outside

Front Garden

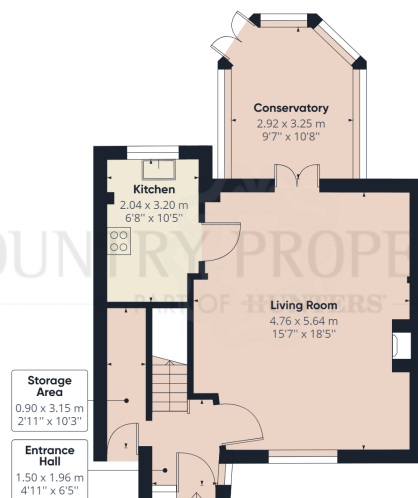
As you approach the property you are greeted by a block paving driveway for one car. Small lawn area and side access which is currently being used as storage.

Rear Garden

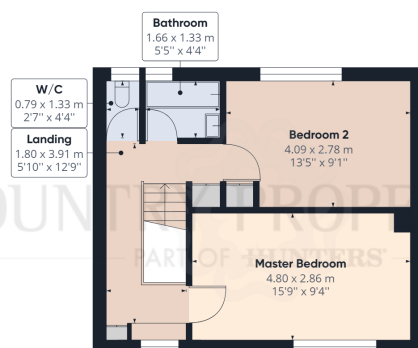
Doors from Conservatory leading to small decking area. Paving on left hand, side small lawn area on right. Shrubs and trees on left hand side with gravel area. Storage bottom right corner. Outdoor tap.



COUNTRY PROPERTIES
PART OF HUNTERS



Ground Floor



Floor 1

COUNTRY PROPERTIES
PART OF HUNTERS

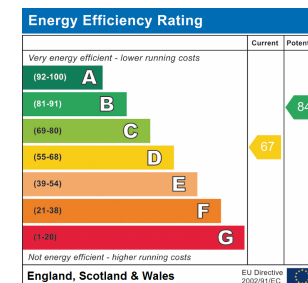
Approximate total area⁽¹⁾

84.06 m²
904.85 ft²

(1) Excluding balconies and terraces

While every attempt has been made to ensure accuracy, all measurements are approximate, not to scale. This floor plan is for illustrative purposes only.

GIRAFFE360



All measurements are approximate and quoted in metric with imperial equivalents and for general guidance only and whilst every attempt has been made to ensure accuracy, they must not be relied on. The fixtures, fittings and appliances referred to have not been tested and therefore no guarantee can be given and that they are in working order. Internal photographs are reproduced for general information and it must not be inferred that any item shown is included with the property. For a free valuation, contact the numbers listed on the brochure.

Viewing by appointment only

Country Properties | 3, Bridge Road | AL8 6UN

T: 01707 339146 | E: welwyn@country-properties.co.uk

www.country-properties.co.uk

COUNTRY PROPERTIES
PART OF HUNTERS