

The image shows the rear garden of a brick house. On the left is a white wall. In the center is a paved area with a black door. To the right is a red brick building with two windows. In the foreground, there is a wooden deck with a wooden planter box and a set of wooden stairs with a metal railing. The sky is clear blue.

# Bucklersbury Mews

Rear of 10 Bucklersbury, Hitchin,  
Hertfordshire, SG5 1BB  
Guide Price £250,000

country  
properties

Bucklersbury Mews makes up an exclusive development of one and two bedroom apartments situated just off the market square in Hitchin. This particular one bedroom apartment is conveniently located on the first floor and comes off of the enclosed courtyard. The property offers an entrance hall with storage cupboard, open plan living and kitchen with dual aspect windows, ceiling window and vaulted ceiling. The kitchen offers integrated appliances with quartz work tops and handle-less kitchen units. There is a generous bedroom and three piece family bathroom suite.

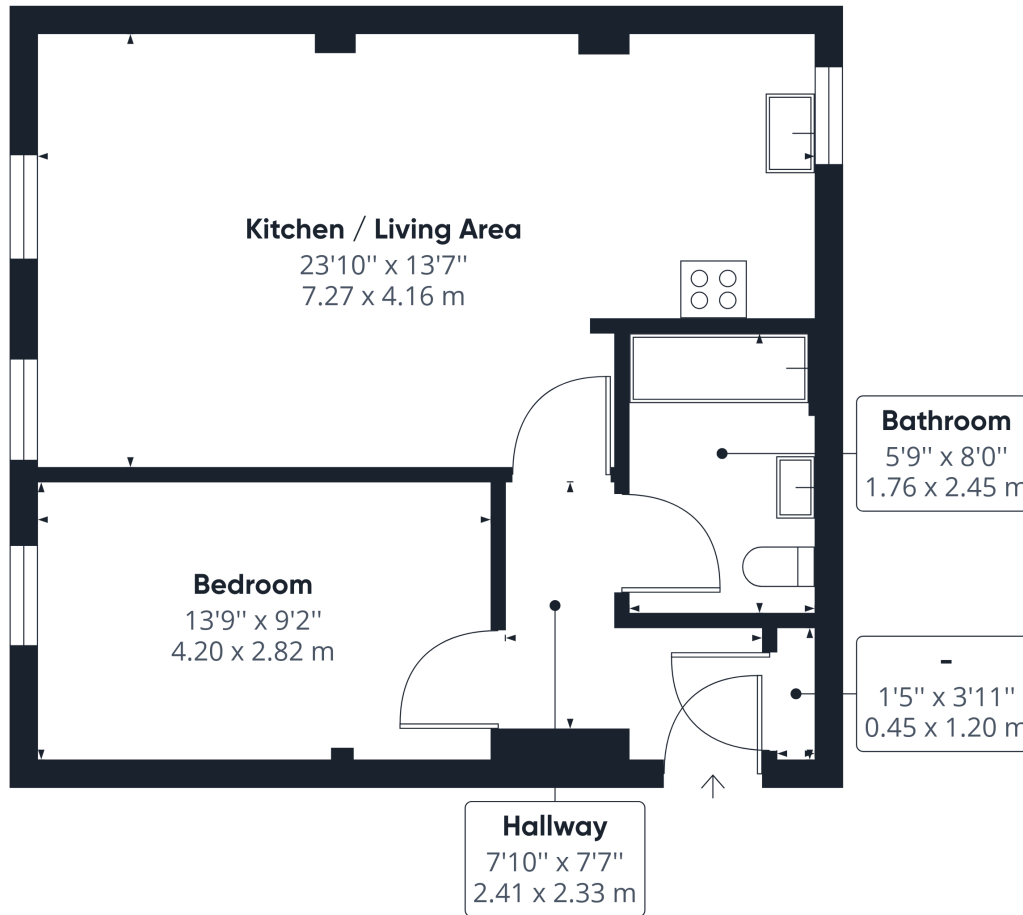
We have been advised by the vendor that there is a 125 year lease remaining on the property and a Service Charge of £1,150 per annum.

Hitchin is a charming medieval market town and has many fine Tudor and Georgian buildings, particularly around the market square. Near to the market square stands the large medieval parish church of St Mary. The town provides good shopping as well as a swimming pool, football team, two theatres, a wide variety of restaurants and pubs and highly regarded girls and boys schools. There is also a mainline railway station providing direct access to Kings Cross and Cambridge.

- An exclusive development of apartments set in the centre of Hitchin
- Secure entrance and internal mews style courtyard
- Open plan living area and bespoke fitted kitchen
- Interior Finishes of contemporary white internal doors with polished chrome door furniture, fitted carpets to bedrooms, 'wood effect' flooring to living areas
- 125 Year Lease
- 0.9 miles, 21 min walk to Hitchin train station (as per Google maps)
- No Onward Chain





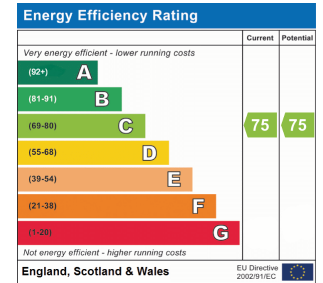


Approximate total area<sup>(1)</sup>  
514.00 ft<sup>2</sup>  
47.75 m<sup>2</sup>

(1) Excluding balconies and terraces

While every attempt has been made to ensure accuracy, all measurements are approximate, not to scale. This floor plan is for illustrative purposes only.

GIRAFFE360



All measurements are approximate and quoted in metric with imperial equivalents and for general guidance only and whilst every attempt has been made to ensure accuracy, they must not be relied on. The fixtures, fittings and appliances referred to have not been tested and therefore no guarantee can be given and that they are in working order. Internal photographs are reproduced for general information and it must not be inferred that any item shown is included with the property. For a free valuation, contact the numbers listed on the brochure.

Viewing by appointment only

Country Properties | 6, Brand Street | SG5 1HX  
T: 01462 452951 | E: hitchin@country-properties.co.uk  
www.country-properties.co.uk

country  
properties