



## Bedford Road

Maples Court | Hitchin | Hertfordshire | SG5 1HF

[www.stonegate-estates.co.uk](http://www.stonegate-estates.co.uk)





# BEDFORD ROAD

---

## Property Description

Situated in a sought-after retirement development just moments from Hitchin town centre, this well-presented second-floor apartment offers comfortable and convenient living for those aged 60 and over.

The property features a light-filled dual-aspect lounge with a Juliet balcony, perfect for enjoying fresh air and views. The refitted kitchen benefits from a window, ensuring natural light and ventilation. There are two well-proportioned bedrooms and a modern refitted shower room, designed with ease of access in mind.

Residents also enjoy exclusive use of a communal lounge, laundry facilities, and beautifully maintained grounds.

With no onward chain, this apartment offers a fantastic opportunity to move straight in and start enjoying your new lifestyle.

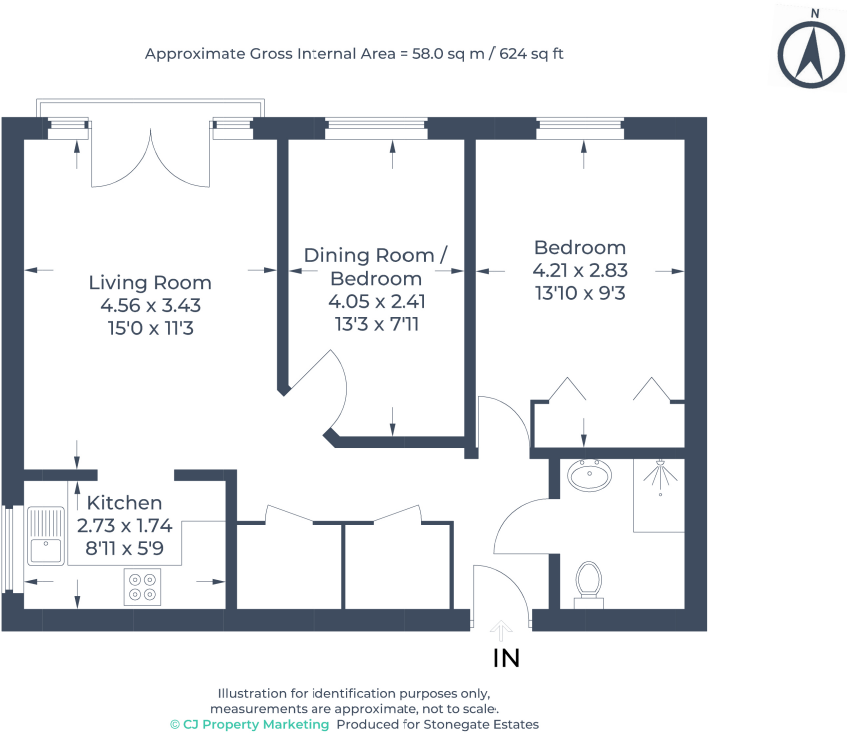
Additional features include lift access, emergency pull cords, and a friendly on-site manager.

Early viewing is highly recommended.

**£285,000 Leasehold**











- Retirement Apartment
- Two Double Bedrooms
- Lift to all Floors
- No Chain
- Residents Lounge
- Communal Gardens
- Town Centre Location
- Parking

EPC Rating: D

---

## Stonegate Estate Agents

01462 438979

[sales@stonegate-estates.co.uk](mailto:sales@stonegate-estates.co.uk) | [www.stonegate-estates.co.uk](http://www.stonegate-estates.co.uk)

