



**51 Riverbank, Laleham Road, Staines-upon-Thames, Surrey. TW18 2QF.**  
**2 Bedroom Apartment - £325,000 Leasehold**



# 51 Riverbank, Laleham Road, Staines-upon-Thames, Surrey. TW18 2QF.

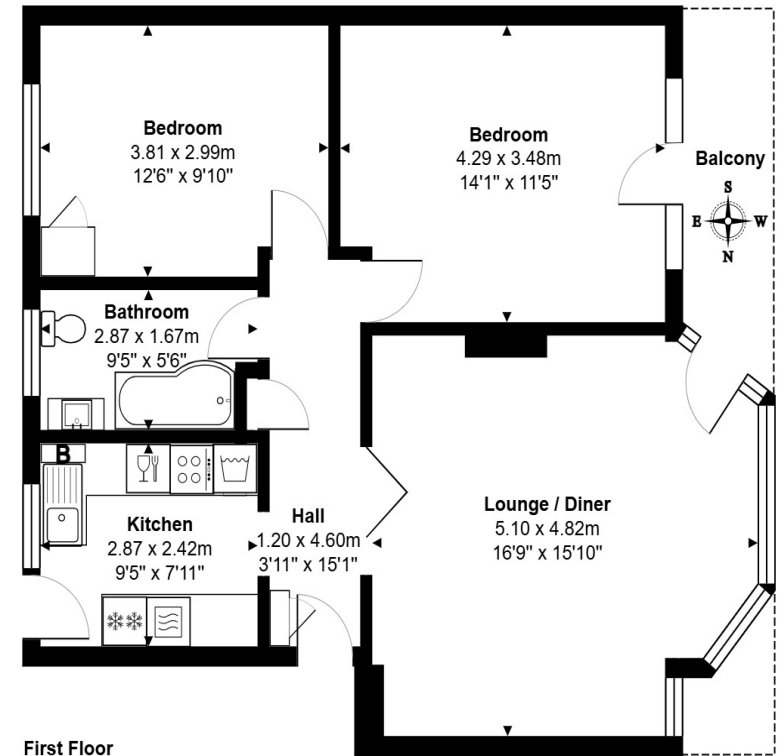
01784 451458

## 2 Bedroom Apartment - £325,000 Leasehold

**STUNNING SPACIOUS TWO DOUBLE BEDROOM APARTMENT SITUATED IN THIS MUCH SOUGHT AFTER RIVERSIDE MANSION BLOCK IDEALLY LOCATED FOR TOWN CENTRE, MAINLINE TRAIN STATION & RIVER THAMES. The property benefits from a spacious lounge/diner with private balcony enjoying views over the well-kept communal grounds, separate modern fitted kitchen, two double bedrooms, modern white bathroom suite and a long lease. Viewings Highly Recommended!**

### Key Features

**STUNNING CONDITION THROUGHOUT  
SOUGHT AFTER RIVERSIDE MANSION BLOCK  
RESIDENTS PARKING  
EXTENSIVE COMMUNAL GARDENS  
PRIVATE BALCONIES**



Total Area: 69.1 m<sup>2</sup> ... 744 ft<sup>2</sup>

All measurements are approximate and for display purposes only.



**GREGORY BROWN**  
RESIDENTIAL SALES & LETTINGS





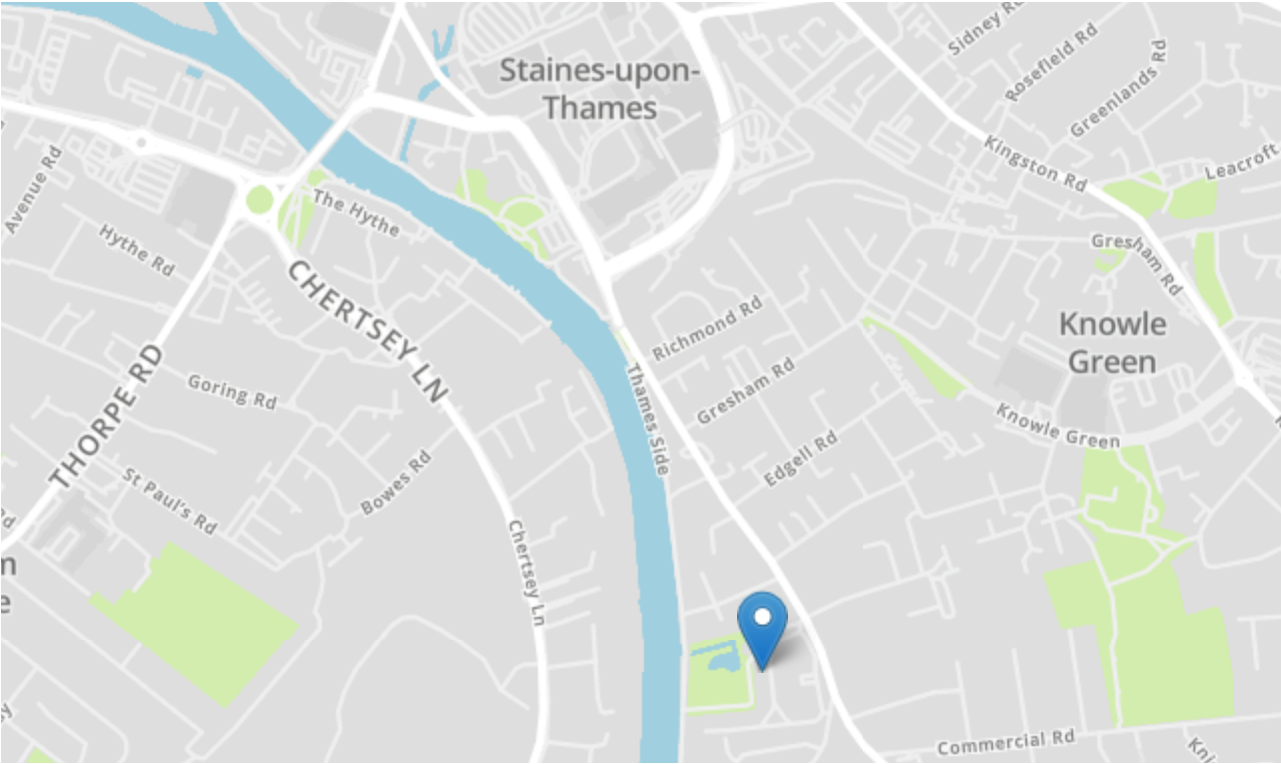






# 51 Riverbank, Laleham Road, Staines-upon-Thames, Surrey. TW18 2QF.

gregory-brown.co.uk



Tenure	<b>Leasehold</b>
Lease Term	<b>To Be Confirmed</b>
Ground Rent	<b>To Be Confirmed</b>
Service Charge	<b>To Be Confirmed</b>
Local Authority	
Council Tax	

We have prepared these property particulars as a general guide to a broad description of the property. They are not intended to constitute part of an offer or contract. We have not carried out a structural survey and the services, appliances and specific fittings have not been tested. All photographs, measurements, floorplans and distances referred to are given as a guide only and should not be relied upon for the purchase of carpets or any other fixtures or fittings. Lease details, service charges and ground rents (where applicable) and council tax are given as a guide only and should be checked and confirmed by your solicitor prior to exchange of contracts. The copyright of all details, photographs and floorplans remain exclusive to Gregory Brown.

