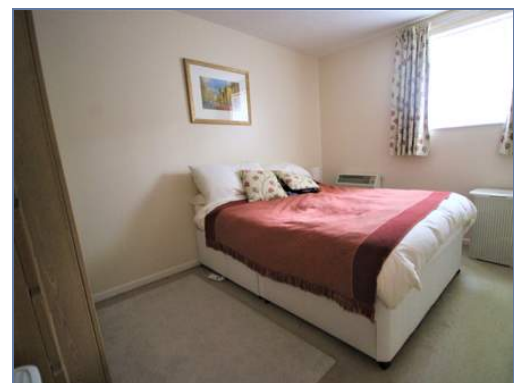




## 116 Porthcawl Green, Tattenhoe, Milton Keynes, Buckinghamshire, MK4 3AL

### £60,000 Leasehold

- Ground floor apartment
- Allocated parking
- 2 Bedrooms
- Fixtures and fittings £3,000
- Communal garden
- 30% shared ownership
- Kitchen with washer dryer, Fridge Freezer and cooker.
- EPC Rating







Located in the highly popular Tattenhoe development with parkland and walks a delightful Ground floor shared ownership apartment with a monthly rent and service charge of £285.00 combined including buildings insurance. The property offers large light lounge, two bedrooms, kitchen with Fridge freezer, washer dryer and cooker, family bathroom and allocated parking. To arrange a viewing please call the elevation team.

## **Entrance Hall**

## **Kitchen**

2.38m x 2.39m (7' 10" x 7' 10")

## **Lounge**

4.33m x 4.99m (14' 2" x 16' 4")

## **Bedroom One**

2.44m x 3.55m (8' 0" x 11' 8")

## **Bedroom Two**

3.56m x 2.07m (11' 8" x 6' 9")

## **Family Bathroom**

## **Disclaimer**

Whilst we have endeavoured to prepare our sales particulars accurately none of the services, appliances or equipment have been tested. A buyer should satisfy themselves on such matters prior to purchase. Any measurements or distances mentioned in these particulars are for guide reference only. If such particulars are fundamental to a purchase, buyers should rely on their own enquiries. All enquiries should be directed to Elevation Estate Agents in the first instance.