



**Itterby Crescent
Cleethorpes
Lincolnshire
DN35**

Offers in Excess of £189,000

bettermove

Itterby Crescent Cleethorpes

Bettermove are proud to present this 3 bedroom semi-detached house in Cleethorpes, available with no forward chain.

This is currently a tenanted property and will be sold with tenants in situ for immediate investment. Rental yields can be obtained through Bettermove.

The property benefits from double glazing, newly replaced windows, and gas central heating throughout, with off road parking available via the driveway.

The council tax band is B.

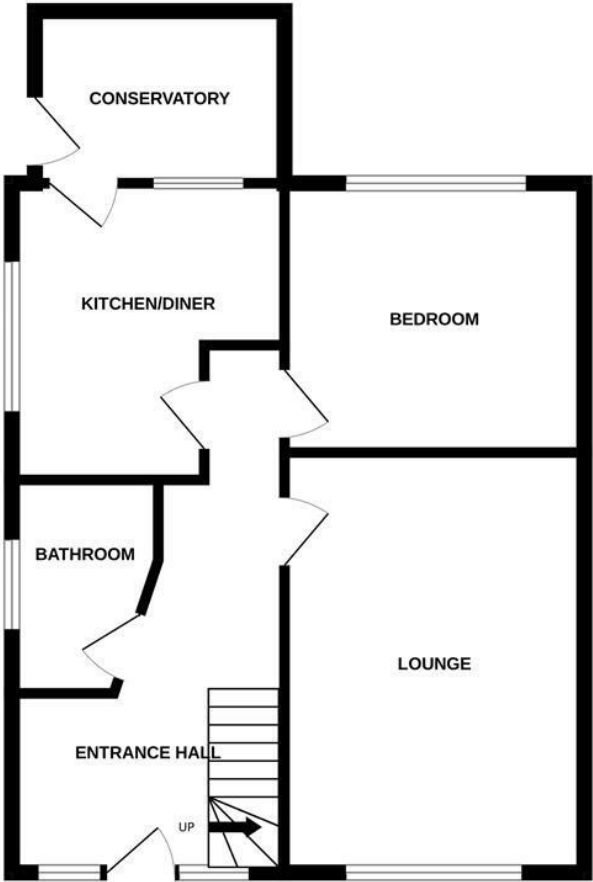
The interior of this beautifully presented property comprises a spacious living room, newly fitted kitchen/diner, conservatory, one double bedroom, and a modern bathroom on the ground floor. The first floor consists of two double bedrooms and ample storage spaces. The exterior boasts a front garden with gravel and lawn areas, and a private rear garden, with patio, gravel and lawn areas, perfect for enjoying the summer months.

Located in the popular coastal town of Cleethorpes, the property is close to a range of amenities, including shops, supermarkets, restaurants, pubs, and a short distance to the seafront. Excellent transport links can be found from Cleethorpes Train Station (2.3 miles), a variety of local bus routes, and quick access to the A16.

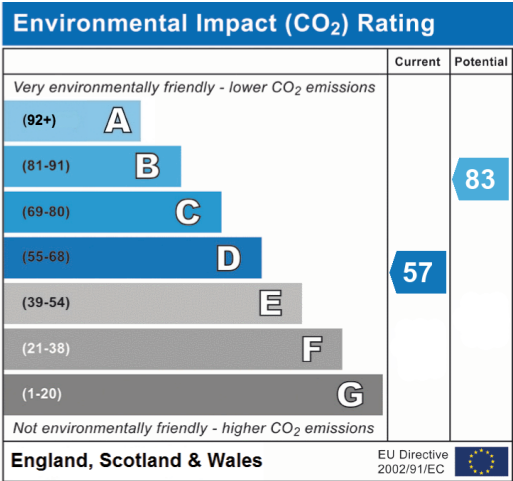
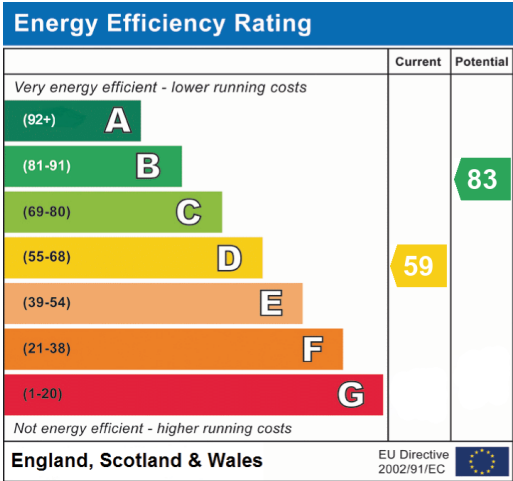
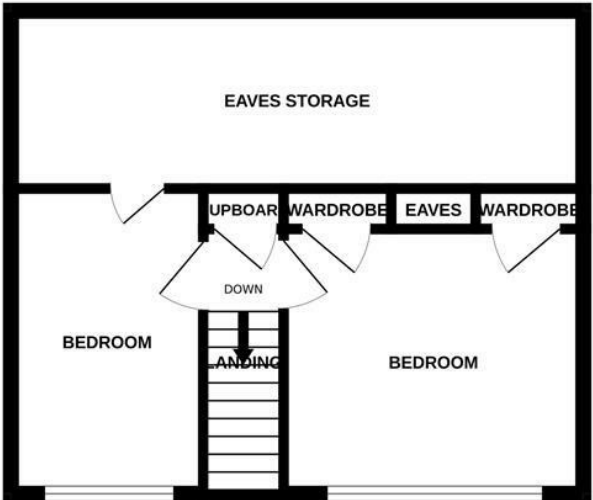
This exciting investment opportunity should not be missed! All enquiries can be made through Bettermove.



GROUND FLOOR



1ST FLOOR





20-22 Bridge End, Leeds, LS1 4DJ
t: 0330 004 0050 e: hello@bettermove.co.uk
www.bettermove.co.uk