



St Marys Grove, London, W4 3LW

Cow & Co
LONDON



Guide price of £850,000 - £1,000,000. An exceptional and recently refurbished stunning two bedroom ground floor apartment located on this popular residential street in the Grove park area of Chiswick.

Benefitting from high ceilings, excellent proportions and a perfect balance of living and entertaining space. The property has been remodelled to the highest standard with every detail carefully designed. This beautiful home further benefits from a large communal garden.

St. Mary's Grove is located in the Grove Park area of Chiswick within a short walk of the river, Chiswick House and Gardens and Chiswick High Road's extensive facilities. The property is also within the catchment area of OFSTED rated outstanding Grove Park primary school.

Transport links include Chiswick mainline station, Chiswick Park tube station, local bus routes and the A4/M4 for routes in and out of London.

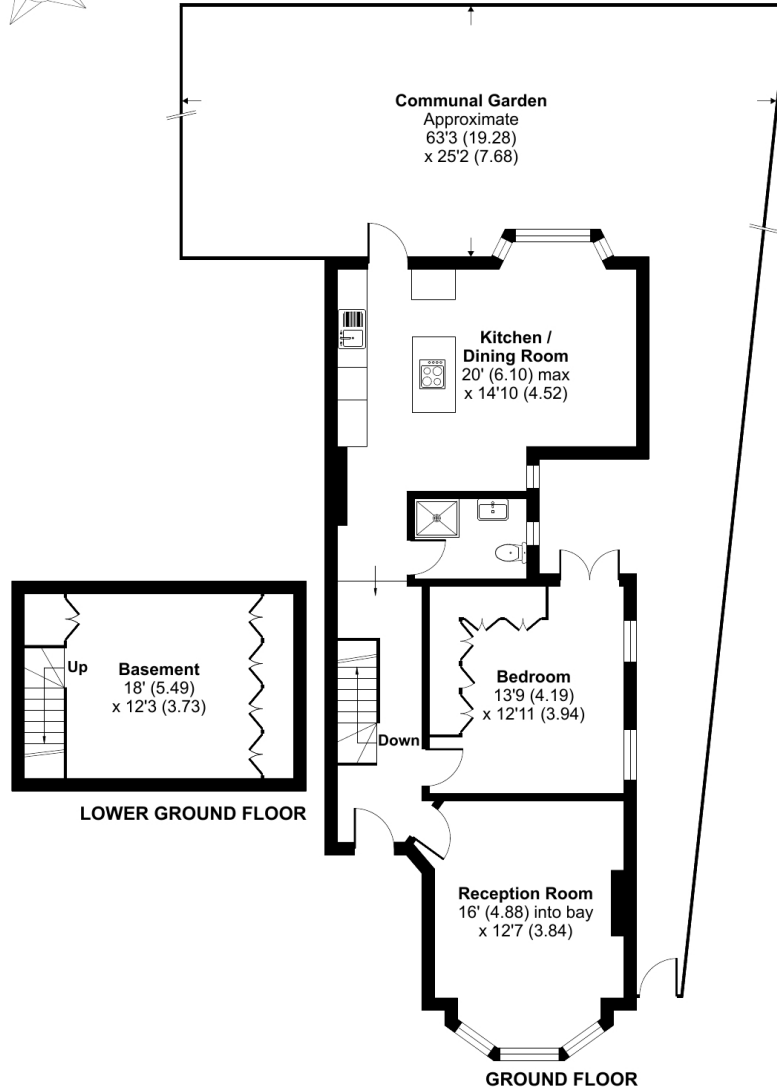


- Two large bedrooms
- Ground Floor
- Recently refurbished throughout to a very high standard
- Under floor heating
- Spacious front aspect sitting room
- Modern and well equipped kitchen with integrated appliances
- Direct access from the kitchen leading onto a lovely communal rear garden
- Share of Freehold

St. Marys Grove, London, W4

Approximate Area = 1076 sq ft / 100 sq m

For identification only - Not to scale



Floor plan produced in accordance with RICS Property Measurement Standards incorporating International Property Measurement Standards (IPMS2 Residential). © nchecon 2024. Produced for Cow & Co Properties Ltd. REF: 1084026

Tel: 0208 065 0010
Email: thehub@cowandco-london.com
Web: cowandco-london.com

Agents note: All measurements are approximate and whilst every attempt has been made to ensure accuracy they are for general guidance only and must not be relied on. The fixture and fittings referred to have not been tested and therefore no guarantee can be given that they are in working order. Internal photographs are reproduced for general information and it must not be inferred that any item shown is included with the property.

Cow & Co

LONDON